

JEFFERSON MUNI (EFW)(KEFW) 2 E UTC-6(-5DT) N42°00.59' W94°20.51'

OMAHA

1047 B NOTAM FILE FOD

L-121

RWY 14-32: H4100X75 (CONC) S-11 PCN 6 R/C/X/T MIRL

IAP

RWY 14: REIL. PAPI(P2L)—GA 3.0° TCH 33'. Thld dspcd 100'. Road.

RWY 32: REIL. PAPI(P2L)—GA 3.0° TCH 36'.

RWY 18-36: 1696X150 (TURF) 0.3% up S

RWY 18: Road.

RWY 36: P-line.

SERVICE: S2 FUEL 100LL LGT Dusk-dawn. ACTVT REIL Rwy 14 and 32; MIRL Rwy 14-32—CTAF. PAPI Rwy 14 and 32 opr consly.

AIRPORT REMARKS: Unattended. Rwy 32 is calm wind rwy. Rwy 18-36 marked with yellow cones.

AIRPORT MANAGER: 515-391-9566

COMMUNICATIONS: CTAF/UNICOM 122.8

② MINNEAPOLIS CENTER APP/DEP CON 134.0

CLEARANCE DELIVERY PHONE: For CD ctc Minneapolis ARTCC at 651-463-5588.

RADIO AIDS TO NAVIGATION: NOTAM FILE FOD.

FORT DODGE (H) TACAN Chan 82 FOD (113.5) N42°36.67' W94°17.69' 176° 36.1 NM to fld. 1164/7E.

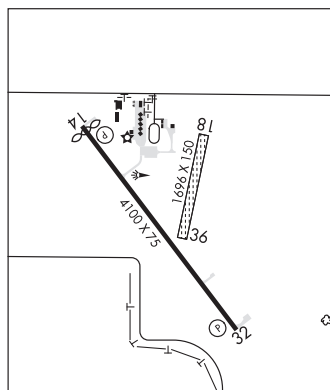
TACAN AZIMUTH unusable:

275°-282° byd 12 NM

DME unusable:

275°-282° byd 12 NM

Wi 2 NM

**JUDGE LEWIS FLD/MOUNT AYR MUNI** (See MOUNT AYR on page 64)**KEOKUK MUNI** (EOK)(KEOK) 4 NW UTC-6(-5DT) N40°27.59' W91°25.71'

CHICAGO

672 B NOTAM FILE EOK

H-5D, L-27B

RWY 08-26: H5500X100 (CONC-WC) S-50, D-65 PCN 14 R/B/W/T

IAP

MIRL

RWY 08: REIL. PAPI(P4L)—GA 3.0° TCH 40'.

RWY 26: MALSR. PAPI(P4L)—GA 3.0° TCH 40'.

RWY 14-32: H3576X100 (CONC) S-30, D-30 PCN 7 R/C/W/T MIRL

RWY 14: REIL. VASI(V4L)—GA 3.0° TCH 36'. Tree.

RWY 32: REIL. PAPI(P4L)—GA 3.0° TCH 45'. Tree.

SERVICE: FUEL 100LL, JET A LGT ACTVT MIRL Rwy 14-32; 08-26;

VASI Rwy 14; PAPI Rws 08; 26; 32; REIL Rws 08; 14 and 32;

MALSR Rwy 26—CTAF. Rwy 14-32 MIRL—thld have 6 thld lghts.

AIRPORT REMARKS: Attended Mon-Fri 1400-2230Z†. Clsd major hol.

Ultraight acct ops inof. 24 hr self service fuel avbl. For svc aft hrs call

319-371-9998. Unlighted tower approximately 1000' MSL 4 miles

SE. Rwy 26 is calm wind rwy.

AIRPORT MANAGER: 319-524-6203

WEATHER DATA SOURCES: AWOS-3 118.375 (319) 524-7884.

COMMUNICATIONS: CTAF/UNICOM 122.8

RCO 122.3 (FORT DODGE RADIO)

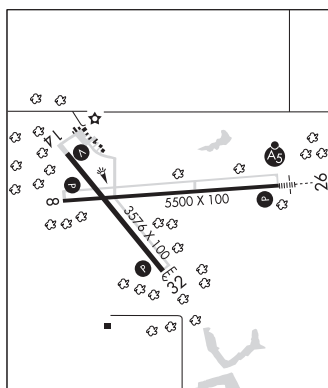
② KANSAS CITY CENTER APP/DEP CON 126.225

CLEARANCE DELIVERY PHONE: For CD if una to ctc on FSS freq, ctc Kansas City ARTCC at 913-254-8508.

RADIO AIDS TO NAVIGATION: NOTAM FILE BRL.

BURLINGTON (L) (L) VOR/DME 111.4 BRL Chan 51 N40°43.41' W90°55.55' 231° 27.9 NM to fld. 727/5E.

ILS/DME 110.9 I-BBJ Chan 46 Rwy 26. Class IT. Unmonitored.

**KEOSAUQUA MUNI** (6K9) 1 E UTC-6(-5DT) N40°44.09' W91°56.93'

CHICAGO

580 NOTAM FILE FOD

RWY 06-24: 2275X100 (TURF)

RWY 06: Thld dspcd 395'. Trees.

RWY 24: Thld dspcd 1000'. Road.

SERVICE: S4

AIRPORT REMARKS: Attended Mon-Fri 1500-2300Z†, Sat-Sun 1500-1900Z†, or call 319-931-2705. Rwy 06-24 rough sfc.

Rwy 06 and Rwy 24 thlds and edges marked with yellow cones. Public phone at main hangar.

AIRPORT MANAGER: 319-931-2705

COMMUNICATIONS: CTAF 122.9

CLEARANCE DELIVERY PHONE: For CD ctc Kansas City ARTCC at 913-254-8508.