

**NANTUCKET MEML** (ACK)(KACK) 3 SE UTC-5(-4DT) N41°15.20' W70°03.63'

NEW YORK  
H-10J, 12K, L-33D  
IAP, AD

47 B ARFF Index—See Remarks NOTAM FILE ACK

**RWY 06-24:** H6303X150 (ASPH-GRVD) S-75, D-170, 2S-175,

2D-280 PCN 38 F/A/X/T HIRL CL 0.3% up NE

**RWY 06:** MALSF. PAPI(P4R)—GA 3.0° TCH 57'. RVR-TR Thld dspcld 537'.

**RWY 24:** SSALR. TDZL. PAPI(P4L)—GA 3.0° TCH 48'. RVR-TR

**RWY 15-33:** H4500X100 (ASPH-GRVD) S-60, D-85, 2S-108,

2D-155 PCN 37 F/A/X/T MIRL

**RWY 15:** REIL. Bldg.

**RWY 33:** REIL. PAPI(P4L)—GA 3.0° TCH 45'.

**LAND AND HOLD—SHORT OPERATIONS**

LDG RWY	HOLD—SHORT POINT	AVBL LDG DIST
RWY 06	15-33	4316
RWY 33	06-24	3650

**RUNWAY DECLARED DISTANCE INFORMATION**

**RWY 06:** TORA-6303 TODA-6303 ASDA-6303 LDA-5766

**RWY 15:** TORA-4500 TODA-4500 ASDA-4500 LDA-4500

**RWY 24:** TORA-6303 TODA-6303 ASDA-6303 LDA-6303

**RWY 33:** TORA-4500 TODA-4500 ASDA-4500 LDA-4500

**SERVICE:** FUEL 100LL, JET A LGT Rwy 24 SSALR unmonitored when

twr clsd. When ATCT clsd actvt MALSF Rwy 06; SSALR Rwy 24;

HIRL Rwy 06-24, MIRL Rwy 15-33; twy lgts—CTAF. PAPI Rwy 06, 24 and 33 opr 24 hrs.

**NOISE:** Arpt has noise abatement procs ctc Noise Officer 508-325-5300. NOTE: See Special Notices—VFR Noise Abatement Procedures.

**AIRPORT REMARKS:** Attended continuously. Deer and birds on and invof arpt. Be aware of hi-speed mil jet and heavy helicopter tfc vicinity Air Station Cape Cod. Class I, ARFF Index B. ARFF Index B svcs prvd btn 1100Z‡ and 0300Z‡. For Index B svcs btn 0301Z‡ and 1059Z‡, 2 hr PPR at 508-325-7569 for Nantucket Airport Ops. PPR 2 hrs for unsked acct ops with more than 9 pax seats; call amgr 508-325-5300. Twy F rstrd to sml acct 12,500 lbs or less. Twy F btn Twy B and Twy H clsd to acct with wingspan more than 79 ft. Fee for non-commercial acct parking.

**AIRPORT MANAGER:** 508-325-7531

**WEATHER DATA SOURCES:** ASOS (508) 325-6082 LAWRS.

**COMMUNICATIONS:** CTAF 118.3 ATIS 127.5 (508) 228-5375 UNICOM 122.95

RCO 122.1R 116.2T (BRIDGEPORT RADIO)

Ⓡ BOSTON CONSOLIDATED TRACON APP/DEP CON 126.1 (1000-0500Z‡)

Ⓡ BOSTON CENTER APP/DEP CON 128.75 (0500-1000Z‡)

TOWER 118.3 May 15-Sep 30 (1100-0300Z‡), Oct 1-May 14 (1100-0200Z‡).

GND CON 132.5 CLNC DEL 119.375

**CLEARANCE DELIVERY PHONE:** For CD if twr clsd & una to ctc FSS freq, ctc Boston Apch at 603-594-5554. When Apch clsd ctc Boston ARTCC at 603-879-6859.

**AIRSPACE:** CLASS D svc 1100-0300Z‡ May 15-Sept 30, 1100-0200Z‡ Oct 1-May 14; other times CLASS G.

**RADIO AIDS TO NAVIGATION:** NOTAM FILE ACK.

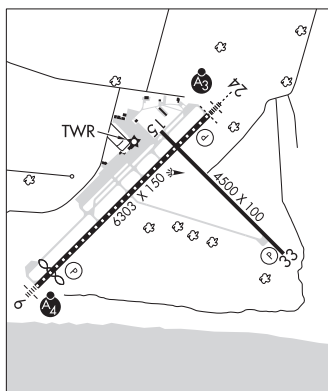
(VH) (H) VOR/DME 116.2 ACK Chan 109 N41°16.91' W70°01.60' 237° 2.3 NM to fld. 99/15W.

VOR unusable:

110°-120° byd 40 NM

ILS/DME 109.1 I-RNE Chan 28 Rwy 06. Class IE. LOC unusable byd 28° right of course.

ILS/DME 109.1 I-ACK Chan 28 Rwy 24. Class IE. Unmonitored when ATCT clsd.



**NAUSET** N41°41.52' W69°59.26' NOTAM FILE CQX.

NEW YORK  
L-33D

**NDB (MHW)** 279 CQX at Chatham Muni. 56/16W.

NDB unusable:

220°-280° byd 20 NM