

BROADWAY N40°47.91' W74°49.31' NOTAM FILE MIV.
(L) (L) VORW/DME 114.2 BWZ Chan 89 157° 12.4 NM to Somerset. 1050/11W.
 VOR portion unusable:
 125°-180° byd 15 NM blo 5,000'
 125°-240° blo 3,000'
 180°-210° byd 15 NM
 210°-235° byd 15 NM blo 5,000'
 DME portion unusable:
 297°-307° byd 20 NM blo 6,000'
 297°-307° byd 32 NM blo 8,000'

NEW YORK
 H-101, L-33A, 34H

BUCKS (See BRIDGETON on page 164)

CALDWELL

ESSEX CO (CDW)(KCDW) 2 N UTC-5(-4DT) N40°52.51' W74°16.88'

NEW YORK
 COPTER
 L-33A, 34H
 IAP, AD

172 B TPA—See Remarks NOTAM FILE CDW

RWY 04-22: H4552X80 (ASPH-GRVD) S-30 HIRL

RWY 04: Thld dspcd 375'. Tree.

RWY 22: REIL. PAPI(P4R)—GA 3.0° TCH 42'. Thld dspcd 135'.
 Trees. Rgt tfc.

RWY 10-28: H3719X75 (ASPH) S-30 MIRL

RWY 10: Thld dspcd 344'. Tree.

RWY 28: Thld dspcd 550'. Tree. Rgt tfc.

SERVICE: S4 **FUEL** 100LL, JET A **OX** 4 **LGT** When ATCT clsd, PAPI
 Rwy 22; HIRL 04-22; MIRL Rwy 10-28 opr consly. HIRL Rwy
 04-22; MIRL Rwy 10-28 preset to low instst. To incrs instst and actvt
 REIL Rwy 22—CTAF. Rwy 22 PAPI unusable byd 5° right of centerline
 due to obstruction.

NOISE: Non-standard traffic patterns for Rwy 04 prohibited due to noise
 sensitive area southwest of the airport.

AIRPORT REMARKS: Attended 1200-0400Z†. Local ops suspended
 Mon-Sat 0400-1200Z† and 0400Z† Sat-1500Z† Sun. Deer and
 birds on and invof arpt. Touch and go lds ltd to based acft only. TPA
 for large and turbojet acft 1699(1527), light acft 1199(1027). Fixed
 wing VFR acft dep: Rwy 04-fly rwy hdg for 1 mi, then turn crosswind
 if remaining in the tfc pat. If departing the tfc pat, cont on rwy hdg til
 reaching tfc pat alt. Fixed wing VFR acft dep: Rwy 10-fly hdg 080 deg
 at rwy dep end. Upon reaching 900 ft MSL, turn crosswind if remaining in the tfc pat; if departing the tfc pat, cont on hdg
 080 deg til reaching tfc pat alt. Fixed wing VFR acft dep: Rwy 22 fly rwy hdg til reaching 900 ft MSL then turn crosswind
 if remaining in the tfc pat. If departing the tfc pat, cont on rwy hdg til reaching tfc pat alt. Fixed wing VFR acft dep: Rwy
 28 fly rwy hdg for 1 mi then turn crosswind if remaining in the tfc pat. If departing the tfc pat, cont on rwy hdg til reaching
 tfc pat alt. Rotocraft: If psbl, cross the arpt bdry at or abv 700 ft MSL. Pilots be alert—the Morristown ILS and GPS Rwy
 23 approaches transit Essex Co Arpt Class D asp. Tfc passes two mi west of the arpt descending through 2000 ft MSL.
 Eng run-ups on Twy N at AER 28 shd be conducted to lmt efct to acft parked on RN Ramp. Ldg fee for all tran acft.

AIRPORT MANAGER: 973-227-4567

WEATHER DATA SOURCES: ASOS 135.5 (973) 575-4417.

COMMUNICATIONS: CTAF 119.8 ATIS 135.5 UNICOM 122.95

Ⓡ NEW YORK APP CON 127.6

CALDWELL TOWER 119.8 (1200-0400Z†) GND CON 121.9 CLNC DEL 121.1

Ⓡ NEW YORK DEP CON 119.2

CLEARANCE DELIVERY PHONE: For CD when ATCT is clsd ctc New York Apch at 800-645-3206

AIRSPACE: CLASS D svc 1200-0400Z†; other times CLASS G.

RADIO AIDS TO NAVIGATION: NOTAM FILE TEB.

TEREBORO (T) (T) VORW/DME 108.4 TEB Chan 21 N40°50.92' W74°03.73' 290° 10.1 NM to fld. 3/11W.

DME unusable:

060°-080° byd 22 NM blo 2,500'

081°-120° blo 4,000'

121°-180° blo 3,000'

236°-246°

VOR unusable:

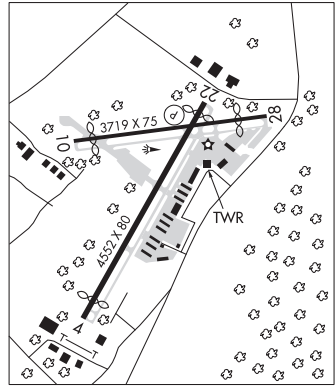
081°-120° blo 4,000'

121°-180° blo 3,000'

236°-246°

LOC 109.35 I-CDW Rwy 22.

COMM/NAV/WEATHER REMARKS: Emerg frequency 121.5 not avbl at twr.



CAPE MAY CO (See WILDWOOD on page 187)