

ELLWOOD CITY N40°49.50' W80°12.69' NOTAM FILE AOO.
(VH) (H) VOR/DME 115.8 EWC Chan 105 257° 8.8 NM to Beaver Co. 1227/8W.
 VOR unusable:
 285°-335°
RCO 122.1R 115.8T (ALTOONA RADIO)

DETROIT
H-10H, L-29C

ENOLA N40°14.78' W76°54.04' NOTAM FILE MDT.
NDB (LOMW) 204 MD 128° 7.1 NM to Harrisburg Intl. 461/11W.

NEW YORK

ERIE

ERIE INTL/TOM RIDGE FLD (ERI)(KERI) 5 SW UTC-5(-4DT) N42°04.99' W80°10.44'
 732 B LRA ARFF Index—See Remarks NOTAM FILE ERI

DETROIT
H-10H, L-30H
IAP, AD

RWY 06-24: H8420X150 (ASPH-GRVD) S-114, D-161, 2S-124,
 2D-264 PCN 45 F/C/X/T HIRL

RWY 06: MALSR. PAPI(P4L)—GA 3.0° TCH 54'. RVR-TR Thld dsplcd 919'. Railroad.

RWY 24: MALSR. PAPI(P4L)—GA 3.0° TCH 55'. RVR-TR Trees.

RWY 02-20: H3508X150 (ASPH) S-50, D-60, 2D-150 MIRL

RWY 02: Thld dsplcd 817'. Railroad.

RWY 20: VASI(V4L)—GA 4.0° TCH 69'. Thld dsplcd 306'. Road.

LAND AND HOLD—SHORT OPERATIONS

LDG RWY	HOLD—SHORT POINT	AVBL LDG DIST
RWY 24	02-20	6550

RUNWAY DECLARED DISTANCE INFORMATION

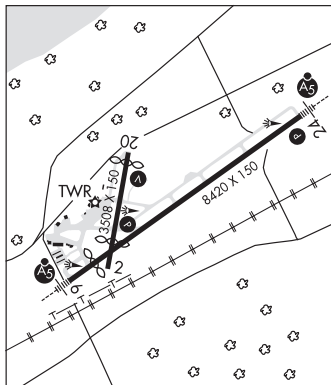
RWY 02: TORA-3508 TODA-3508 ASDA-3337 LDA-2520

RWY 06: TORA-8420 TODA-8420 ASDA-8420 LDA-7501

RWY 20: TORA-3508 TODA-3508 ASDA-3208 LDA-2902

RWY 24: TORA-8420 TODA-8420 ASDA-7500 LDA-7500

SERVICE: S2 **FUEL** 100LL, JET A **OX** 3, 4 **LGT** When twr clsd ACTIVATE MALSR Rwy 06 and Rwy 24, PAPI Rwy 06 and Rwy 24, HIRL Rwy 06-24, VASI Rwy 20, MIRL Rwy 02-20 and twy lgts—CTAF. Rwy 06 MALSR unmonitored. Rwy 24 MALSR unmonitored. Lgtd supplemental windcone located at north side Rwy 24 1000' west AER.



AIRPORT REMARKS: Attended Mon-Fri 1000-0400Z†, Sat-Sun 1000-0300Z†. Birds on and in/ov arpt. Class I, ARFF Index B. Index C avail upon request. Rwy 02-20 clsd to sked acr ops more than 9 pax seats and non sked acr ops more than 30 pax seats exc taxi. Extensive non-radio and ultralight acft opr 3.5-5 NM southwest of arpt at or blo 700' AGL May 1-Oct 31 annually SR-SS. Ramp usage fee for acft clearing customs. Fee based on acft wgt, ctc apt for fee sked. Flight Notification Service (ADCUS) available, prior reservation required, phone 814-833-1355.

AIRPORT MANAGER: 814-833-4258

WEATHER DATA SOURCES: ASOS 120.35 (814) 835-7112.

COMMUNICATIONS: CTAF 118.1 ATIS 120.35 UNICOM 122.95

Ⓡ **BUFFALO APP/DEP CON** 121.0 (1100-0500Z†)

Ⓡ **CLEVELAND CENTER APP/DEP CON** 127.075 (0500-1100Z†) or ctc Cleveland ARTCC at 440-774-0227.

TOWER 118.1 (1100-0500Z†) **GND CON** 121.9 **CLNC DEL** 126.8

CLEARANCE DELIVERY PHONE: For CD ctc Buffalo Apch at 716-626-6920, when Apch clsd ctc Cleveland ARTCC at 440-774-0232.

AIRSPACE: CLASS D svc 1100-0500Z†; other times CLASS E.

TRSA svc ctc **BUFFALO APP CON** within 20 NM

RADIO AIDS TO NAVIGATION: NOTAM FILE ERI.

(L) **TACAN** Chan 31 ERI (109.4) N42°01.04' W80°17.56' 059° 6.6 NM to fld. 797/6W.

TACAN AZIMUTH unusable:

076°-109° byd 30 NM blo 5,000'

110°-180° byd 25 NM blo 5,000'

181°-249° byd 30 NM blo 5,000'

250°-274° byd 20 NM

295°-315° byd 35 NM blo 3,000'

DME unusable:

076°-109° byd 30 NM blo 5,000'

110°-180° byd 25 NM blo 5,000'

181°-249° byd 30 NM blo 5,000'

250°-274° byd 20 NM

295°-315° byd 35 NM blo 3,000'

ILS/DME 110.3 I-ERI Chan 40 Rwy 06. Class IE. Unmonitored when ATCT closed.

ILS/DME 110.3 I-AWY Chan 40 Rwy 24. Class ID.