

**PITTSBURGH INTL (PIT)(KPI) P (AFRC DANG) 12 NW UTC-5(-4DT) N40°29.49' W80°13.96'**  
1203 B LRA Class I, ARFF Index D NOTAM FILE PIT

**DETROIT**  
**H-10H, 12I, L-29C**  
**IAP, AD**

**RWY 10R-28L:** H11500X200 (CONC-GRVD) S-100, D-225, 2D-350  
PCR 980 R/A/X/T HIRL CL

**RWY 10R:** ALSF2. TDZL. PAPI(P4L)—GA 3.0° TCH 71'. RVR-TMR  
Trees.

**RWY 28L:** MALSR. TDZL. PAPI(P4L)—GA 3.0° TCH 70'. RVR-TMR  
Trees. 0.3% up.

**RWY 10C-28C:** H10775X150 (ASPH-CONC-GRVD) S-100, D-149,  
2D-260 PCR 804 R/A/X/T HIRL CL

**RWY 10C:** REIL. PAPI(P4L)—GA 3.0° TCH 50'. RVR-TMR Thld dsplcd  
465'.

**RWY 28C:** TDZL. PAPI(P4L)—GA 3.0° TCH 43'. RVR-TMR Thld dsplcd  
602'.

**RWY 10L-28R:** H10502X150 (ASPH-CONC-GRVD) S-100, D-225,  
2D-400 PCR 780 R/A/X/T HIRL CL

**RWY 10L:** ALSF2. TDZL. PAPI(P4L)—GA 3.0° TCH 83'. RVR-TMR  
0.5% down.

**RWY 28R:** MALSR. TDZL. PAPI(P4L)—GA 3.0° TCH 71'. RVR-TMR  
Antenna.

**RWY 14-32:** H8101X150 (CONC-GRVD) S-100, D-225, 2D-410  
PCR 835 R/A/X/T HIRL CL

**RWY 14:** PAPI(P4L)—GA 3.0° TCH 67'. RVR-TMR Pole. 0.5% down.

**RWY 32:** MALSR. TDZL. PAPI(P4L)—GA 3.0° TCH 72'. RVR-TMR Thld dsplcd 335'. 0.3% up.

#### RUNWAY DECLARED DISTANCE INFORMATION

**RWY 10C:**TORA-10775 TODA-10775 ASDA-10173 LDA-9708

**RWY 10L:**TORA-10502 TODA-10502 ASDA-10502 LDA-10502

**RWY 10R:**TORA-11500 TODA-11500 ASDA-11492 LDA-11492

**RWY 14:**TORA-8101 TODA-8101 ASDA-7366 LDA-7366

**RWY 28C:**TORA-10775 TODA-10775 ASDA-10310 LDA-9708

**RWY 28L:**TORA-11500 TODA-11500 ASDA-11500 LDA-11500

**RWY 28R:**TORA-10502 TODA-10502 ASDA-10102 LDA-10102

**RWY 32:**TORA-8101 TODA-8101 ASDA-7801 LDA-7466

**SERVICE:** S2 FUEL 100LL, JET A LGT Rwy 10L ALSF2 and SSALR is a dual mode sys and cti by twr and remote monitored.

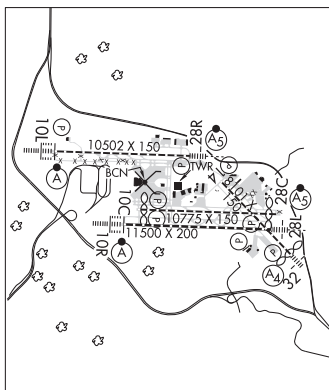
**MILITARY—JASU (ANG)**—(A/M32A-86) (AM32-95); (AFRC) - 2(A/M32A-86) (AM32-95) **FUEL** A, A+ (C412-472-6700, 1000-0400Z±; After hr, 2 hr PPR and call out fee of \$250 per occurrence for any delivery in excess of 5000 gal; Call C412-906-8772.) A++ Provided by ANG and AFRC.(Mil) (NC-100LL) **FLUID** LPOX LHNIT **OIL** O-156 **TRAN ALERT** No priority basis.

**AIRPORT REMARKS:** Attended continuously. Deer and birds on and invof arpt. Twr is authorized to have acft line up and wait on Rwy 28L at Twy P dur hrs of darkness. The specific rwy shall be used only for dep and the int must be visible from twr. Acft using Twy N prohibited to stop on overpass area due to possible emerg evacuation hse. Terminal taxilanes east of concourses A and B rstd to group 3 acft and smaller. Twy G int at Rwy 10L-28R rgt turn not allowed. Twy AA no turn-off onto Twy A for acft wingspan 171' or greater exc PPR 412-472-5630. ASSC in use. Operate transponders with altitude reporting mode and ADS-B (if equipped) enabled on all airport surfaces. Pushback clnc required fr gates A100 and A101 at Cargo A. Ctc GC. Pushback fm these gates enters Twy N. Trml apn uncontrolled. Pushback pilot discretion. Do not exit trml apn at Twy C1, C4, V3, V4, D1, W. Ctc GC when hldg at Twy C2, C3, V1, V2, V5, V6, D2, D3. Ldg fee.

**MILITARY REMARKS:** ANG—Opr 1130-2030Z± Mon-Fri exc hol. (CLOSED every other Mon). Official business only. PPR 48 hr prior notice rqr. Call DSN 294-7374/7428, C412-776-7374/7428. 20 min prior to ETA, ctc STEEL CON. ANG acft must ctc Tanker 303.0/Ftr opns 293.7 before crossing Rwy 28L to obtain clnc to enter. AFRC-PPR/offl bus min 48 hr ctc afld mgmt DSN 277-8163, C412-474-8163. Ltd tran svc. Afld mgt nml duty hrs 1300-0100Z± Mon, Wed, Fri, 1300-0500Z± Tue, Thu, exc hol. Unit training assembly 1300-2100Z± Sat. Tran acft must have apvl of 9110G/CC for PPR dur off-duty hr. No svc avbl for space avbl pax dur off-duty hr. Call Pitt Comd Post (Iron City) by RDO 15 min prior to arrival. Afld mgmt does not issue or stor COMSEC. COMSEC stor ctc comd post DSN 277-8146. **CSTMS/AG/IMG**—Coord with 171 ARW comd post DSN 312-294-7374 or 911AW Afld Mgmt DSN 312-277-8163. **CAUTION—BASH** Phase II ops in effect 1 Jul-31 Aug annually. Unless MSN requirements direct otherwise, flights should not be sked within +/- 1 hr of SS/SR. Tran aircrew should req bird watch cond fr AFRC (Pitt ops) on 252.1 or ANG ops (Steel cti) on 311.0. Aircrew will be informed by Steel control or Pitt ops (as applicable) if current BWC is other than low regardless of BASH phase.

**AIRPORT MANAGER:** (412) 472-3509

**WEATHER DATA SOURCES:** ASOS (412) 472-0145 TDWR.



CONTINUED ON NEXT PAGE

## CONTINUED FROM PRECEDING PAGE

COMMUNICATIONS: D-ATIS ARR 127.25 D-ATIS DEP 135.9 UNICOM 122.95

① APP CON 124.15 (001°-090°) 123.95 (091°-180°) 133.7 (181°-270°) 121.25 (271°-360°)

TOWER 128.3

CLNC DEL 126.75 PRE-TAXI CLNC 126.75 GND CON 121.9 (South) 127.8 (North)

① DEP CON 119.35 (South) 124.75 (North) 125.275

CPDLC (LOGON KUSA)

PDC

AIRSPACE: CLASS B See VFR Terminal Area Chart.

RADIO AIDS TO NAVIGATION: NOTAM FILE PIT.

MONTOUR (L) DME 112.0 MMJ Chan 57 N40°29.28' W80°11.63' 277° 1.8 NM to fld. 1193.

DME unusable:

126°-165° byd 10 NM blo 5,000'

126°-165° byd 15 NM

350°-360° byd 30 NM

ILS 111.7 I-LXB Rwy 10L. Class IIIE.

ILS 108.9 I-GUT Rwy 10R. Class IIIE.

ILS 108.9 I-PFS Rwy 28L. Class IT.

ILS 111.7 I-HFE Rwy 28R. Class IIE.

ILS/DME 111.3 I-TQW Chan 50 Rwy 32. Class IE.

**PITTSBURGH NORTHEAST** (9G1) 12 NNE UTC-5(-4DT) N40°36.21' W79°49.57'

DETROIT

1063 NOTAM FILE AOO

L-29C

RWY 17-35: H3550X100 (ASPH)

RWY 17: Trees.

RWY 35: Trees.

AIRPORT REMARKS: Attended Mon-Fri 1300-2200Z. Unatndd Federal hols. Arpt CLOSED for night ops. PAEW indef; operation of construction equipment 519' from Rwy 35 thld, construction training site. Tie down ropes not supplied.

AIRPORT MANAGER: 724-504-3717

COMMUNICATIONS: CTAF/UNICOM 122.8

CLEARANCE DELIVERY PHONE: For CD ctc Pittsburgh Apch at 412-472-5591

RADIO AIDS TO NAVIGATION: NOTAM FILE PIT.

MONTOUR (L) DME 112.0 MMJ Chan 57 N40°29.28' W80°11.63' 067° 18.2 NM to fld. 1193.

DME unusable:

126°-165° byd 10 NM blo 5,000'

126°-165° byd 15 NM

350°-360° byd 30 NM

**PITTSBURGH/BUTLER RGNL** (See BUTLER on page 271)**PITTSFIELD****BROKENSTRAW** (P15) 1 E UTC-5(-4DT) N41°49.98' W79°21.64'

DETROIT

1230 B NOTAM FILE AOO

RWY 09-27: 3650X100 (TURF) LIRL 0.3% up W

RWY 09: Thld dspcd 510'. Pole.

RWY 27: Thld dspcd 685'. Trees. Rgt tfc.

SERVICE: S2 FUEL 100LL LGT ACTIVATE LIRL Rwy 09-27-122.8. For rotating bcn call 814-563-3166 or 4949.

AIRPORT REMARKS: Attended dalgt hrs. Deer and geese on and invof rwy. Extensive glider ops weekends. Rwy not maintained during winter months. Rwy soft during spring thaw. Rwy 09 520' terrain 2400' south, Rwy 27 370' terrain 3600' east. Rapidly rising terrain south of the arpt. Rwy 09-27 marked with yellow cones and lgts. 42' p-line paralleling rwy approximately 215' south of rwy centerline, p-line marked with orange spheres.

AIRPORT MANAGER: 814-563-3166

COMMUNICATIONS: CTAF 122.9

CLEARANCE DELIVERY PHONE: For CD ctc Buffalo Apch at 716-626-6920, when Apch clsd ctc Cleveland ARTCC at 440-774-0232.

**POCONO MOUNTAINS RGNL** (See MOUNT POCONO on page 300)**PORT MEADVILLE** (See MEADVILLE on page 297)