

AUGUSTA

AUGUSTA SPB (M00) 3 S UTC-5(-4DT) N44°16.05' W69°46.90'

MONTREAL

23 NOTAM FILE BGR
WATERWAY 13W-31W: 2500X100 (WATER)
WATERWAY 13W: Trees. Rgt tfc.
WATERWAY 31W: Trees.

SEAPLANE REMARKS: Unattended. Daytime use only. Unmarked shoals E of sealane. Location has tidal fluctuation of 4'. Sealane poorly marked, irregular shaped channel. Docks removed durg winter months Oct-May.

AIRPORT MANAGER: 207-626-2306

COMMUNICATIONS: CTAF 122.9

CLEARANCE DELIVERY PHONE: For CD ctc Portland Apch at 207-874-7320, when Apch clsd ctc Boston ARTCC at 603-879-6859.

AUGUSTA STATE (AUG)(KAUG) 1 NW UTC-5(-4DT) N44°19.24' W69°47.84'

MONTREAL

352 B TPA-1400(1048) NOTAM FILE AUG

H-11D, L-32H

Rwy 17-35: H5002X100 (ASPH-GRVD) S-50, D-60 HIRL

IAP

0.7% up S
Rwy 17: MALSR. PAPI(P4L)—GA 3.0° TCH 53'. Tree.
Rwy 35: REIL. PAPI(P4L)—GA 3.0° TCH 40'. Road.

Rwy 08-26: H2613X75 (ASPH) S-30 MIRL

Rwy 08: Trees.
Rwy 26: Fence.

RUNWAY DECLARED DISTANCE INFORMATION

Rwy 08: TORA-2613 TODA-2613 ASDA-2613 LDA-2613
Rwy 17: TORA-5002 TODA-5002 ASDA-5002 LDA-5002
Rwy 26: TORA-2613 TODA-2613 ASDA-2613 LDA-2613
Rwy 35: TORA-5002 TODA-5002 ASDA-5002 LDA-5002

ARRESTING GEAR/SYSTEM

Rwy 17: EMAS
Rwy 35: EMAS

SERVICE: S4 **FUEL** 100LL, JET A **LGT** ACTIVATE MALSR Rwy 17, REIL Rwy 35, PAPI Rwy 17 and Rwy 35, HIRL Rwy 17-35, MIRL Rwy 08-26—CTAF.

AIRPORT REMARKS: Attended 1200-0100Z. Arpt unatndd aft dark durg snow and ice season. Birds and deer on and invof arpt. Seagulls on and invof rwy intersections. Fld cond rprts snow depths, BA may not be avbl for rwys fm 2300-1100Z. For 100LL aft nml bus hrs call 207-622-2507. Rwy 35 designated calm wind rwy. Rwy 17-35 have EMAS category B2. Twy F east clsd to all acft with wing span greater than 45'. Air carrier ramp clsd to general aviation tfc. Rwy 08-26 markings are faded. Ldg fee for multi-engine acft, fee waived with fuel purchase.

AIRPORT MANAGER: 207-626-2306

WEATHER DATA SOURCES: ASOS 118.325 (207) 623-0432.

COMMUNICATIONS: CTAF/UNICOM 123.0

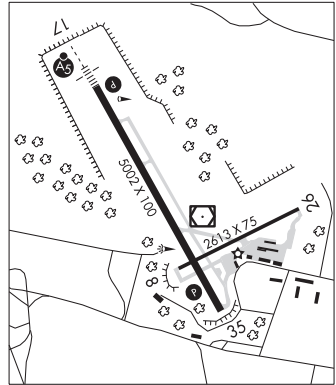
RCO 122.1R 114.95T 122.2 (BANGOR RADIO)

Ⓡ PORTLAND APP/DEP CON 128.35 (1045-0500Z)

Ⓡ BOSTON CENTER APP/DEP CON 128.2 (112°-292°) 120.25 (293°-111°) (0500-1045Z)

CLNC DEL 119.95 299.2

CLEARANCE DELIVERY PHONE: For CD when Portland Apch clsd, ctc Boston ARTCC at 603-879-6859.



CONTINUED ON NEXT PAGE

CONTINUED FROM PRECEDING PAGE

AIRSPACE: CLASS E.

RADIO AIDS TO NAVIGATION: NOTAM FILE AUG.

(VL) (DH) VOR/DME 114.95 AUG Chan 96(Y) N44°19.20' W69°47.79' at fld. 349/18W.

VOR unusable:

- 005°-015° byd 10 NM blo 7,000'
- 018°-050° byd 40 NM
- 055°-058° byd 40 NM
- 065°-089° byd 40 NM
- 075°-089° byd 25 NM blo 3,000'
- 090°-115° byd 15 NM
- 116°-175° byd 40 NM
- 116°-189° byd 25 NM blo 3,000'
- 188°-207° byd 40 NM
- 190°-205° byd 10 NM blo 5,000'
- 206°-220° byd 25 NM blo 3,000'
- 208°-213° byd 40 NM blo 3,000'
- 208°-213° byd 49 NM blo 7,000'
- 208°-213° byd 68 NM
- 225°-245° byd 40 NM
- 246°-256° byd 40 NM blo 7,000'
- 246°-256° byd 53 NM
- 257°-261° byd 40 NM
- 271°-275° byd 40 NM
- 300°-353° byd 40 NM

DME unusable:

- 010°-070° byd 25 NM blo 7,000'
- 071°-143° byd 25 NM blo 3,000'
- 144°-154° byd 25 NM blo 7,000'
- 155°-189° byd 25 NM blo 3,000'
- 190°-205° byd 10 NM blo 5,000'
- 206°-220° byd 25 NM blo 3,000'
- 221°-285° byd 15 NM blo 6,000'

DUNNS NDB (LOMW) 366 AU N44°24.66' W69°51.64' 171° 6.1 NM to fld. 238/18W.

ILS 108.7 I-AUG Rwy 17. Class IB. LOM DUNNS NDB. Glideslope unusable byd 5° right side of LOC course; blw 430'; byd 9 NM. LOC unusable fm 0.5 NM to thld abv 1,500'.

BANGOR

BANGOR INTL (BGR)(KBGR) P (ANG ARNG) 3 W UTC-5(-4DT) N44°48.45' W68°49.69'

192 B TPA—See Remarks LRA ARFF Index—See Remarks NOTAM FILE BGR

RWY 15-33: H11440X200 (ASPH-GRVD) S-100, D-210, 2D-400

PCN 120R/A/W/T HIRL CL

RWY 15: ALSF2. TDZL. PAPI(P4L)—GA 3.0° TCH 55'. RVR-TMR 0.4% down.

RWY 33: MALSR. PAPI(P4L)—GA 3.0° TCH 57'. RVR-TMR Trees.

RUNWAY DECLARED DISTANCE INFORMATION

RWY 15: TORA-11440 TODA-11440 ASDA-11440 LDA-11440

RWY 33: TORA-11440 TODA-11440 ASDA-11440 LDA-11440

SERVICE: S4 FUEL 100LL, JET A OX2, 4 MILITARY—JASU 1(MD-3)

1(MC-11) (MA-1A) FUEL A++ (Mil), A, A+ (C207-992-4600)

(NC-100LL) FLUID SP PRESAIR LPOX LOX -Off-base contracted LOX

avbl H24-rqr 24 hr notice. OIL O-133-148(Mil)

AIRPORT REMARKS: Attended continuously. TPA for turbo jet acft is 2000(1808) unless otherwise instructed. ARFF Index B with Index E capabilities avbl 24/7. Flight Notification Service (ADCUS) available.

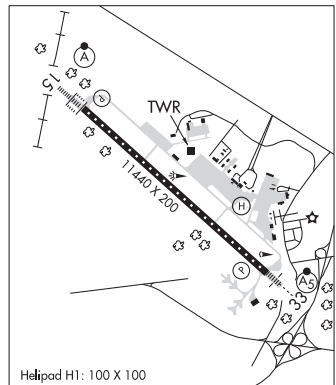
MILITARY REMARKS: Transient acft may be diverted to civilian side during non-duty hrs & weekends. Fee required; no ANG transient alert.

CAUTION Bash Phase II period Sep-Nov, Apr-May. Expect increased bird activity. Ctc Base Ops/Command Post/SOF for current bird watching cond. MISC Rwy 15-33 grooved. ANG Opr 1100-1930Z‡ Mon-Fri, clsd weekends and hol. PPR rqr for ANG ramp. Ctc afid mgmt DSN 698-7232, C207-404-7232 for PPR dur opr hrs. Pre-coord all transportation requirements and haz cargo with PPR rqr. PPR valid +/- 1 hr unless prior coord. 3 hr out call, 30 min out call 311.0 to CFM customs/AG and tran svc. Comd post C207-404-7788 24 hrs. ARNG Opr 1230-2100Z‡ Mon-Fri exc hol. Ltd maint. J8. PPR May-Oct svc DSN 626-1100.

AIRPORT MANAGER: 207-992-4600

WEATHER DATA SOURCES: ASOS 127.75 (207) 561-2515.

HALIFAX
H-11D, L-32I
IAP, DIAP, AD



Helipad H1: 100 X 100

CONTINUED ON NEXT PAGE