

**BALTIMORE**

**BALTIMORE/WASHINGTON INTL THURGOOD MARSHALL** (BWI)(KBWI) 9S UTC-5(-4DT)

**WASHINGTON**

N39°10.54' W76°40.14'

**COPTER**

143 B LRA Class I, ARFF Index D NOTAM FILE BWI

H-10H, 12I, L-29E, 34F, 36I, A

**RWY 10-28:** H10503X150 (ASPH-GRVD) S-80, D-220, 2D-1020, 2D/2D2-1340 PCN 105F/A/W/T HIRL CL

IAP, AD

**RWY 10:** ALSF2. TDZL. PAPI(P4R)—GA 3.0° TCH 71'. RVR-TMR Thld dspcd 550'. Tree.

**RWY 28:** MALSR. PAPI(P4L)—GA 3.0° TCH 75'. RVR-TMR Thld dspcd 700'. Tree. 0.3% up.

**RWY 15R-33L:** H9501X150 (ASPH-GRVD) S-80, D-220, 2D-675, 2D/2D2-890 PCN 70 F/A/W/T HIRL CL

**RWY 15R:** MALSR. PAPI(P4R)—GA 3.0° TCH 73'. RVR-TMR Thld dspcd 301'. Antenna.

**RWY 33L:** MALSR. TDZL. PAPI(P4L)—GA 3.0° TCH 72'. RVR-TMR Thld dspcd 500'. Tower.

**RWY 15L-33R:** H5000X100 (ASPH-GRVD) S-30, D-45 PCN 15 F/A/W/T HIRL 0.5% up NW

**RWY 15L:** REIL. PAPI(P4L)—GA 3.0° TCH 47'. RVR-TR Pole.

**RWY 33R:** MALSR. REIL. PAPI(P4L)—GA 3.0° TCH 47'. RVR-TR Tree.

**RUNWAY DECLARED DISTANCE INFORMATION**

**RWY 10:** TORA-10503 TODA-10503 ASDA-10503 LDA-9953

**RWY 15L:** TORA-5000 TODA-5000 ASDA-5000 LDA-5000

**RWY 15R:** TORA-9501 TODA-9501 ASDA-8601 LDA-8301

**RWY 28:** TORA-10503 TODA-10503 ASDA-10503 LDA-9803

**RWY 33L:** TORA-9501 TODA-9501 ASDA-8801 LDA-8301

**RWY 33R:** TORA-5000 TODA-5000 ASDA-5000 LDA-5000

**SERVICE:** S4 FUEL 100LL, JET A OX 1, 2, 3, 4

**NOISE:** Noise abatement procedures in effect—Rstrn for Rwy 15L-33R except for emerg or Mercy flights ctc amgr for info.

**AIRPORT REMARKS:** Attended continuously. Deer and birds ocly on and invof arpt. Major constr on arpt dly; acft mov and prkg areas subject to short notice change/closure. For current info phone BWI opns cntr 410-859-7018. Rwy status lgts in operation. Practice lndg & apch by turbo-pwr'd acft prohibited 0300-1100Z; practice lndg & tkof by B-747 acft prohibited Rwy 15R-33L. Rwy length avbl for Rwy 28 departures from Twy U1 is 9802 ft. ASDE-X in use. Operate transponders with alt reporting mode and ADS-B (if equipped) enabled on all arpt surfaces. Acft departing Rwy 28 exp dep from Twy U1. No apron parking for unscheduled air carriers. General aviation acft ctc UNICOM prior to arr at General Aviation ramp for security purposes. Midfield RVR sensor shared by Rwy 10-28 & Rwy 15R-33L. Taxiing prohibited btn concourse C and adjacent bldg structure SW of concourse C. Access to gate C12 must be via Twy A. Taxilanes T-1 and H, rstd to Group III acft with max wingspan of 118 ft. Twy A is rstd to group IV acft wingspan 171 ft or less. Twy T btn Twy H and Twy E rstd to Group IV acft with wingspan less than 171 ft. Twy T btn Twy E and Twy B rstd to Group V acft with wingspan less than 214 ft; when Group V acft are on Twy T, Twy A is rstd to max wingspans of 110 ft. Twy S, south of Twy P, rstd to acft 60,000 lbs & less. Dual parallel taxilanes have been added to the D/E alleyway, Taxilane N and Taxilane N1. Taxilane N is designated a Group V taxilane with max wingspan of 213 ft. Taxilane N1 is designated a Group IV taxilane with a max wingspan of 170 ft. Rwy 15L-33R rstd to acft producing less than 90 decibels exc for emergs. Cont mowing operations adj all rwns & twys Apr thru Nov. Distracting lgts (golf driving range) right side exdtd cntrln Rwy 33L fm AER to 1/4 mi final. Acft on visual apchs expect to maintain 3000 ft until 10 DME fm BAL VORTAC; dep acft should expect turns based on Baltimore DME. Rwy 15R deice pad, Position # 1 rstd to acft with wingspan of 156 ft 1 inch or less & length of 180 ft 3 inches or less. Psn's # 2 & # 3 are rstd to acft with a wingspan of 156 ft 1 inch or less, Position # 3 is rstd to acft with a wingspan of 156 ft 1 inch or less & length of 180 ft 3 inches or less; Position # 4 rstd to acft with wingspan of 213 ft or less & length of 229 ft 2 inches or less. Rwy 28 de ice pad Lane 1 rstd to acft with wingspan 171 ft or less, Lane 2 rstd to acft with wingspan 135 ft or less, Lane 3 is used by large acft max wingspan 215 ft and when in use—Lanes 2 and 4 are unavbl. Lanes 4, 5 & 6 are rstd to acft wingspan 135 ft or less. Concourse A alt deicing area is rstd to B737-800 size acft with winglets or smlr on spots 6, 7 and 8. B737-700 size acft with winglets or smaller are rstd to spots 6A, 7B and 8B. Ldg fee. Flight Notification Service (ADCUS) avbl.

**AIRPORT MANAGER:** 410-859-7024

**WEATHER DATA SOURCES:** ASOS (410) 691-1278 TDWR.

**COMMUNICATIONS:** D-ATIS 115.1 127.8 UNICOM 119.4

**BALTIMORE RCO** 122.2 (LEESBURG RADIO)

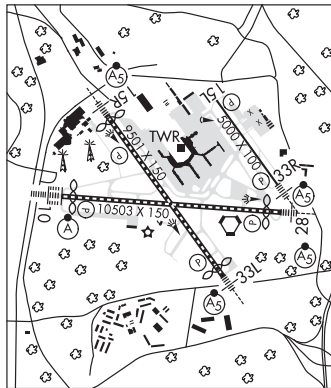
Ⓡ **POTOMAC APP CON** 119.0 (020°-130°) 119.7 (131°-180°) 124.55 (101°-130°) 128.7 (181°-019°) 119.0 (131°-180°) 119.7 (020°-130°) 125.525 (181°-019°)

**BALTIMORE TOWER** 119.4 **GND CON** 121.9 **CLNC DEL** 118.05

Ⓡ **POTOMAC DEP CON** 124.55 (East) 128.7 (West)

CPDLC (LOGON KUSA)

PDC



**CONTINUED ON NEXT PAGE**

CONTINUED FROM PRECEDING PAGE

**AIRSPACE: CLASS B** See VFR Terminal Area Chart.

**RADIO AIDS TO NAVIGATION:** NOTAM FILE BWI.

**(L) (L) VORTACW** 115.1 BAL Chan 98 N39°10.26' W76°39.68' at fld. 150/11W.

DME unusable:

133°-155° byd 20 NM blo 10,000'

133°-155° byd 36 NM

300°-349° byd 35 NM

VOR unusable:

133°-155° byd 20 NM blo 10,000'

197°-217° byd 17 NM

260°-281° byd 15 NM

282°-292°

TACAN AZIMUTH unusable:

029°-042° byd 30 NM

133°-155° byd 20 NM blo 10,000'

180°-190° byd 17 NM

300°-349° byd 35 NM

**ELLCOTT NDB (MHW)** 371 FND N39°17.24' W76°46.62' 154° 8.4 NM to fld. 381/11W.

NDB unusable:

140°-320° byd 12 NM blo 10,500'

**ILS 109.7 I-BAL** Rwy 10. Class IIIE.

**ILS 111.95 I-UQC** Rwy 15L. Class ID. LOC unusable byd 30° left of course.

**ILS 111.7 I-FND** Rwy 15R. Class IE.

**ILS 109.7 I-OEH** Rwy 28. Class IE.

**ILS 111.7 I-RUX** Rwy 33L. Class IIIE.

**ILS 111.95 I-BWI** Rwy 33R. Class ID.

**COMM/NAV/WEATHER REMARKS:** During ATC zero events, UNICOM 119.4.

**ESSEX SKYPARK** (W48) 3 SE UTC-5(-4DT) N39°15.75' W76°25.93'

14 B NOTAM FILE DCA

**WASHINGTON**

**COPTER**

**RWY 16-34:** H2081X30 (ASPH) MIRL

**RWY 16:** REIL. PAPI(P2L)—GA 4.5° TCH 19'. Trees.

**RWY 34:** REIL. PAPI(P2R)—GA 4.5° TCH 20'. Thld dspld 192'. Trees.

**SERVICE:** LGT ACTVT REIL Rwy 16 and Rwy 34; MIRL Rwy 16-34—CTAF.

**AIRPORT REMARKS:** Unattended. No touch and go ldgs. Pla and hel pat NA. PPR for mil, emerg and med acft.

**AIRPORT MANAGER:** 443-996-1743

**COMMUNICATIONS:** CTAF/UNICOM 122.7

**CLEARANCE DELIVERY PHONE:** For CD ctc Potomac Apch at 866-429-5882.

• • • • •  
**WATERWAY 16W-34W:** 3000X300 (WATER)