

**GREAT FALLS INTL** (GTF)(KGTF) P (ANG) 3 SW UTC-7(-6DT) N47°28.94' W111°22.22'

**GREAT FALLS**  
H-1E, L-13C  
IAP, AD

3680 B AOE ARFF Index—See Remarks NOTAM FILE GTF  
**RWY 03-21:** H10502X150 (ASPH-GRVD) S-116, D-225, 2S-175, 2D-424, 2D/D1-555, 2D/2D2-915 PCN 58 F/B/X/T HIRL CL  
**RWY 03:** ALSF2. TDZL. PAPI(P4L)—GA 3.0° TCH 70'. RVR-TMR Road.  
**RWY 21:** REIL. PAPI(P4R)—GA 3.0° TCH 75'. RVR-TMR 0.3% up.  
**RWY 17-35:** H6030X150 (ASPH-GRVD) S-87, D-140, 2D-245, 2D/2D2-245 PCN 30 F/B/X/T MIRL  
**RWY 17:** PAPI(P4L)—GA 3.0° TCH 47'. Thld dspcd 230'. Road.  
**RWY 35:** PAPI(P4L)—GA 3.0° TCH 48'.

**RUNWAY DECLARED DISTANCE INFORMATION**

**RWY 03:** TORA-10502 TODA-10502 ASDA-10502 LDA-10502  
**RWY 17:** TORA-6030 TODA-6030 ASDA-6030 LDA-5800  
**RWY 21:** TORA-10502 TODA-10502 ASDA-10502 LDA-10502  
**RWY 35:** TORA-5400 TODA-5400 ASDA-5400 LDA-5400

**SERVICE:** S4 FUEL 100LL, JET A OX1, 2, 3, 4 LGT Rwy 21 REIL opr continuously when rwy lgts are on. Rwy lgts controlled by twr. RWY 03 PAPI UNUSBL BYD 9 DEGS right of CNTRLN. **MILITARY— JASU** 7(MD-3) 3(MC-1) 20(MC-11) 9(MD-4M) 2(M32A-60A) **FUEL** A++(ANG) A (C406-453-7613) (NC-100LL) **FLUID SP PRESAIR OIL** O-128-133-148-156(Mil) **TRAN ALERT** Ltd tran svc only avbl for acft participating in ANG Ops with Prior Coordination (PPR).

**AIRPORT REMARKS:** Attended continuously. Birds on and in vof arpt. Class I, ARFF Index B. Index level C ARFF capability is available at all times. Twy C unstrd weight and avbl for taxiing acft. Flight Notification Service (ADCUS) avbl.

**AIRPORT MANAGER:** 406-727-3404

**WEATHER DATA SOURCES:** ASOS 126.6 (406) 454-7551.

**COMMUNICATIONS:** ATIS 126.6 UNICOM 122.95

**RCO** 122.3 (GREAT FALLS RADIO)

Ⓡ **APP/DEP CON** 128.6

**TOWER** 118.7 **GND CON** 121.7 **CLNC DEL** 121.7

**AIRSPACE:** CLASS D.

TRSA svc ctc **APP CON** 128.6

**RADIO AIDS TO NAVIGATION:** NOTAM FILE GTF.

(VH) (H) **VORTACW** 115.1 GTF Chan 98 N47°27.00' W111°24.73' 025° 2.6 NM to fld. 3672/16E.

VOR unusable:

060°-171° byd 40 NM

072°-084° byd 40 NM blo 18,000'

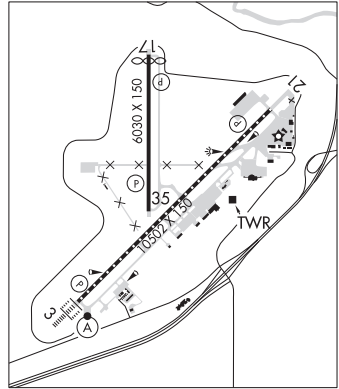
092°-111° byd 40 NM blo 13,000'

092°-111° byd 71 NM

112°-119° byd 40 NM blo 18,000'

120°-147° byd 40 NM

**ILS/DME** 111.3 I-SMR Chan 50 Rwy 03. Class IIIE.



## HAMILTON

**RAVALLI CO** (HRF)(KHRF) 1 E UTC-7(-6DT) N46°15.43' W114°07.43'

**GREAT FALLS**  
H-1D, L-13C  
IAP

3636 B TPA-4436(800) NOTAM FILE GTF

**RWY 17-35:** H5200X75 (ASPH) S-40, D-53 PCN 15 F/D/Y/U MIRL

**RWY 17:** PAPI(P2L)—GA 3.0° TCH 35'.

**RWY 35:** PAPI(P2L)—GA 3.0° TCH 35'.

**SERVICE:** S4 FUEL 100LL, JET A, A+ LGT ACTVT PAPI Rwy 17, 35; MIRL Rwy 17-35—CTAF. For MIRL Rwy 17-35 drg dalgt hrs ctc ap mgr 406-375-9149.

**AIRPORT REMARKS:** Unattended. Ultralight activity on and in vof arpt. Rwy 17-35 is ltd by the arpt opr to acft max gwt tkof 40000 lbs SW and 53000 lbs DW w/o PPR. Lndg Fee: Ldg fee for acft ovr 17000 lbs.

**AIRPORT MANAGER:** 406-375-9149

**WEATHER DATA SOURCES:** AWOS-3P 119.825 (406) 375-9149. press \*3

**COMMUNICATIONS:** CTAF/UNICOM 122.8

Ⓡ **SALT LAKE CENTER APP/DEP CON** 132.4

**CLEARANCE DELIVERY PHONE:** For CD ctc Salt Lake ARTCC at 801-320-2568.

