

CONTINUED FROM PRECEDING PAGE

AIRPORT MANAGER: 503-378-4880
 COMMUNICATIONS: CTAF 122.9
 CLEARANCE DELIVERY PHONE: For CD ctc Salt Lake ARTCC at 801-320-2568.

PACIFIC CITY STATE (PFC)(KPFC) 1 S UTC-8(-7DT) N45°11.96' W123°57.71' SEATTLE

10 NOTAM FILE MMV
 RWY 14-32: H1860X30 (ASPH) S-7
 RWY 14: Tree.

AIRPORT REMARKS: Unattended. Owner advises ctc with Department of Aviation 503-378-4880 prior to use. Rwy may be under water dur winter high tides. Ocnl driftwood on rwy due to flooding. Sfc conds not rptd. Downwind lds not recommended and may not be possible. Many close in obst on both sides of rwy. Exp low level turbulence dur crosswind cond. Assorted trees and 40' p-line at 500' north of rwy. Pre-ktof engine run-ups to be conducted at the parking ramp only.

AIRPORT MANAGER: 503-378-4880
 COMMUNICATIONS: CTAF 122.9
 CLEARANCE DELIVERY PHONE: For CD ctc Seattle ARTCC at 253-351-3694.

PAISLEY (22S) 3 NW UTC-8(-7DT) N42°43.08' W120°33.77' KLAMATH FALLS

4395 B NOTAM FILE MMV
 RWY 13-31: H4300X60 (ASPH) LIRL 0.4% up SE
 AIRPORT REMARKS: Unattended. Rwy 13 has aiming points.
 AIRPORT MANAGER: 541-947-4222
 COMMUNICATIONS: CTAF 122.9

CLEARANCE DELIVERY PHONE: For CD ctc Seattle ARTCC at 253-351-3694.
 RADIO AIDS TO NAVIGATION: NOTAM FILE LKV.
 LAKEVIEW (H) (H) VORTACW 112.0 LKV Chan 57 N42°29.57' W120°30.43' 331° 13.7 NM to fld. 7465/19E.

PENDELTON

EASTERN OREGON RGNL AT PENDELTON (PDT)(KPDT) P (ARNG) 3 NW UTC-8(-7DT) N45°41.71' SEATTLE

W118°50.60' H-1C, L-13A
 1494 B NOTAM FILE PDT IAP, AD

RWY 08-26: H6301X150 (ASPH-PFC) S-115, D-132, 2D-210
 PCN 34 F/B/Y/U HIRL
 RWY 08: ODALS. VASI(V4R)—GA 3.0° TCH 35'. RVR-R Ground.
 RWY 26: MALSR. PAPI(P4L)—GA 3.0° TCH 48'. RVR-T
 RWY 11-29: H4808X100 (ASPH-GRVD) S-70, D-120, 2S-152,
 2D-122 PCN 18 F/B/Y/U MIRL
 RWY 11: REIL. PAPI(P4L)—GA 3.0° TCH 46'.
 RWY 29: REIL. PAPI(P4R)—GA 3.0° TCH 48'.

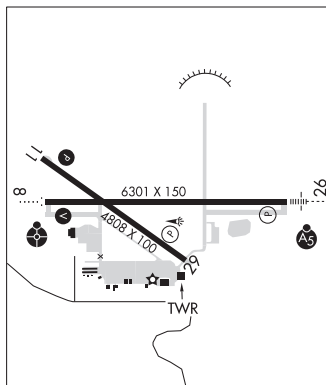
RUNWAY DECLARED DISTANCE INFORMATION

RWY 08:	TORA-6301	TODA-6301	ASDA-6301	LDA-6301
RWY 11:	TORA-4808	TODA-4808	ASDA-4808	LDA-4808
RWY 26:	TORA-6301	TODA-6301	ASDA-6301	LDA-6301
RWY 29:	TORA-4808	TODA-4808	ASDA-4808	LDA-4808

SERVICE: S4 FUEL 100LL, JET A1+, MOGAS LGT When ATCT clsd
 ACTVT MALSR Rwy 26; ODALS Rwy 08; REIL Rwy 11 & 29; VASI
 Rwy 08, PAPI Rwy 11; HIRL Rwy 08-26; MIRL Rwy 11-29—CTAF.
 Rwy 11-29 PCL for hi inst 5 clicks only. PAPI Rwy 29 opr constly.
 REIL Rwy 11 OTS. REIL Rwy 29 OTS. MILITARY— FUEL (NC-100LL,
 A1+ - Self svc avbl H24.)

AIRPORT REMARKS: Attended 1400-0400Z†. Svcs avbl from FBO btn 0400-1400Z† by phone call 541-276-3313 or 541-310-9542. Self fueling cardlocks avbl 24 hrs. Clsd to unscheduled air carrier ops with more than 30 pax seats exc PPR 4 hrs call 541-276-4411. Deer on and invof arpt Apr and Aug especially mornings and evenings. Thld Rwy 29 nstd marking, portion of rwy to function as twy. Twy B clsd south of Twy A. Int of ramp and Rwy 29 north end of terminal bldg, area obstructed from view of twr by terminal bldg. Rwy 08-26 surface condition unmonitored 1400-0400Z†. Rwy 11-29 surface condition unmonitored 1400-0400Z†. Fqt dly UAS actvty (lge and small) inside and invof the CDAS.

AIRPORT MANAGER: 541-276-7754



CONTINUED ON NEXT PAGE

CONTINUED FROM PRECEDING PAGE

WEATHER DATA SOURCES: ASOS 118.325 (541) 278-2329.

COMMUNICATIONS: CTAF 119.7 UNICOM 122.95

PENDLETON RCO 122.2 (MC MINNVILLE RADIO)

Ⓡ SPOKANE APP/DEP CON 133.15 (1400-0600Z±) other times ctc

Ⓡ SEATTLE CENTER 132.6

TOWER 119.7 (1400-0400Z±) GND CON 121.9

CLEARANCE DELIVERY PHONE: When Apch clsd, for CD ctc Seattle ARTCC at 253-351-3694

AIRSPACE: CLASS D svc 1400-0400Z±; other times CLASS E.

RADIO AIDS TO NAVIGATION: NOTAM FILE PDT.

PENDLETON (VH) (H) VORTACW 114.7 PDT Chan 94 N45°41.91' W118°56.32' 079° 4.0 NM to fld. 1575/14E.

VOR unusable:

057°-066° byd 40 NM

067°-078° byd 40 NM blo 29,000'

096°-106° byd 40 NM blo 8,300'

096°-106° byd 48 NM blo 18,000'

107°-117° byd 40 NM

118°-128° byd 40 NM blo 12,000'

118°-128° byd 75 NM

129°-207° byd 40 NM

ILS 110.3 I-PDT Rwy 26. Class IE. LOC and glideslope unmonitored when twr clsd.

COMM/NAV/WEATHER REMARKS: Emerg freq 121.5 not avbl at twr.

PINEHURST STATE (24S) 1 SW UTC-8(-7DT) N42°06.61' W122°22.99'

KLAMATH FALLS

3643 NOTAM FILE MMV

RWY 04-22: H2800X30 (ASPH) 2.0% up SW

RWY 04: Trees.

RWY 22: Trees.

AIRPORT REMARKS: Unattended. Surface conditions not reported. Irregular winter maintenance. Arpt may be clsd by snow.

Strong winds from any direction will likely cause low-level turbulence. Rwy 04-22 12 ft trees wi 25 feet of cntrln full len.

Rwy 22 slopes up to the SW, with abrupt 4% rise on SW half of rwy. Owner advises contact Oregon Dept. of Aviation 503-378-4880 prior to use.

AIRPORT MANAGER: 503-378-4880

COMMUNICATIONS: CTAF 122.9

CLEARANCE DELIVERY PHONE: For CD ctc Seattle ARTCC at 253-351-3694.

PITTSBURG LANDING (See IMNAHA on page 175)

PORTLAND

PORTLAND DOWNTOWN HELIPORT (61J) 0 N UTC-8(-7DT) N45°31.52' W122°40.26'

SEATTLE

78 B NOTAM FILE MMV

HELIPAD H1: 80X80 (ROOF-TOP) S-25 PERIMETER LGTS

SERVICE: LGT For heliport PLASI when approaching flt apch and tkf 020-activate CTAF 3 times. When approaching flt apch and tkf 025-activate CTAF 5 times. When approaching flt apch and tkf 030-activate CTAF 7 times.

HELIPORT REMARKS: Unattended. +199' radio twr (lgt) 4950' E of heliport in flt apch and tkf 025°. Helipad H1 yellow perimeter lgts, blue centerline twy lgts to helipads. Helipad H1 single heliport with 4 flt apchs 162°/220°/248°/295° and tkf directions 342°/040°/068°/115°. Arrow lgts for flt apch 220°/248°/295° and tkf 040°/068°/115°. Ldg fee.

AIRPORT MANAGER: 503-823-6677

COMMUNICATIONS: CTAF/UNICOM 123.075

CLEARANCE DELIVERY PHONE: For CD ctc Portland Apch at 503-493-7545.