

SKYKOMISH STATE (S88) 1 E UTC-8(-7DT) N47°42.66' W121°20.34'

SEATTLE

1002 NOTAM FILE SEA

RWY 06-24: 2050X100 (TURF)

RWY 06: Trees.

RWY 24: Trees.

AIRPORT REMARKS: Unattended. Arpt CLOSED 1 Oct – 1 June exc for approved mil and public/law enforcement helicopter ops.

Vehicles, pedestrians and animals on and invof rwy. Ctc WA State Aviation Division 360-709-8015 or 1-800-552-0666

WA area for facility info prior to use. For acct accidents/incidents ctc WA state emergency operations center

800-258-5990. Mountains surround arpt. Rwy soft when wet. Rwy marked with reflectors during dates arpt is open.

Rwy 06, ditch, 50 ft from rwy end; bldgs, 450 ft from rwy end. Rwy 24, 25 ft trees, 20 ft from rwy end.

AIRPORT MANAGER: (360) 618-2477

COMMUNICATIONS: CTAF 122.9

CLEARANCE DELIVERY PHONE: For CD ctc Seattle ARTCC at 253-351-3694.

SKYLINE SPB (See ANACORTES on page 215)

SNOHOMISH

HARVEY FLD (S43) 1 SW UTC-8(-7DT) N47°54.29' W122°06.16'

SEATTLE

23 TPA-1007(984) NOTAM FILE SEA

L-1D

RWY 15L-33R: H2672X36 (ASPH) S-10 LIRL(NSTD) 0.3% up SE

IAP

RWY 15L: Thld dsplcd 452'. Trees. Rgt tfc.

RWY 33R: Thld dsplcd 242'. Trees.

RWY 15R-33L: 2430X100 (TURF) 0.3% up SE

RWY 15R: Trees. Rgt tfc.

RWY 33L: Trees.

SERVICE: S4 FUEL 100LL, JET A

NOISE: NS ABTMT procedures in effect, ctc arpt mgr 360-568-1541.

AIRPORT REMARKS: Attended Nov-Mar 1530-0030Z†, Apr-Oct 1530-0500Z‡. . Parachute Jumping. Parachute drop zone btm

Rwy 15L-33R and main twy, large grvl circle. Additional parachute student drop zone 1 NM East of arpt marked with

white X. Fuel 24 hr credit card svc avbl. Arriving helicopter tfc apch helipads from NE or SE to avoid student drop zone.

Rwy 15R-33L clsd Nov 1- May 31. Helicopter trng west of rwys 500' and blo. High voltage P-line 22' high 25' from

AER 15L. Rwy 15L and Rwy 15R calm wind rwys. Rwy 15L-33R NSTD LIRL, thld lgts 360° green.

AIRPORT MANAGER: 360-568-1541

COMMUNICATIONS: CTAF/UNICOM 123.0

® SEATTLE APP/DEP CON 128.5

CLEARANCE DELIVERY PHONE: For CD ctc Seattle Apch at 206-214-4722.

RADIO AIDS TO NAVIGATION: NOTAM FILE PAE.

PAINÉ (L) (L) VORW/DME 110.6 PAE Chan 43 N47°55.19' W122°16.67' 077° 7.1 NM to fld. 669/20E.

SOUTH BEND(RAYMOND)

WILLAPA HARBOR (2S9) 2 NW UTC-8(-7DT) N46°41.86' W123°49.40'

SEATTLE

13 B NOTAM FILE SEA

L-1C

RWY 11-29: H3005X52 (ASPH) S-12 MIRL(NSTD)

RWY 11: Trees.

RWY 29: Trees.

SERVICE: LGT NSTD MIRL Rwy 11-29, lgts 25' from edge. ACTIVATE

MIRL Rwy 11-29-122.8.

AIRPORT REMARKS: Unattended. Birds and animals on and invof arpt. Rwy

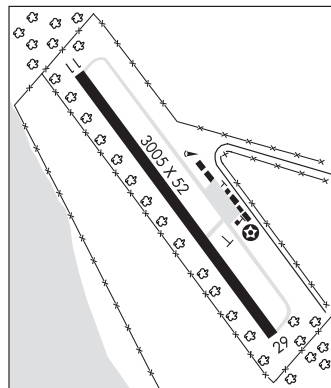
11-29 52' wide with 22.5' asph trtd shoulders.

AIRPORT MANAGER: 360-942-3422

COMMUNICATIONS: CTAF 122.9

CLEARANCE DELIVERY PHONE: For CD ctc Seattle ARTCC at 253-351-3694.

CONTINUED ON NEXT PAGE



CONTINUED FROM PRECEDING PAGE

RADIO AIDS TO NAVIGATION: NOTAM FILE HQM.

HOQUIAM (VH) (H) VORTAC 117.7 HQM Chan 124 N46°56.82' W124°08.96' 119° 20.1 NM to fld. 10/19E.

VOR unusable:

017°-024° byd 40 NM
 037°-042° byd 40 NM
 053°-058° byd 40 NM
 066°-079° byd 40 NM
 081°-091° byd 40 NM blo 4,000'
 081°-091° byd 55 NM blo 5,000'
 081°-091° byd 62 NM
 092°-137° byd 40 NM
 154°-157° byd 40 NM
 195°-208° byd 40 NM
 268°-273° byd 40 NM
 357°-004° byd 40 NM

SOUTHWEST WASHINGTON RGNL (See KELSO on page 240)

SPANAWAY

SHADY ACRES (3B8) 3 SE UTC-8(-7DT) N47°04.22' W122°22.27'

SEATTLE

445 NOTAM FILE SEA

RWY 16-34: H1800X20 (ASPH) LIRL

RWY 16: Trees.

RWY 34: Thld dspcd 200'. Road. Rgt tfc.

AIRPORT REMARKS: Unattended. Arpt clsd to mil helicopters. Civ hls fly in fixed wing tfc pats due to ltd vis. Twrs lctd: 2100 ft NE, 160 ft AGL red/w. Lgtd at ngt; 2700 ft E 150 ft AGL, lgtd at ngt. Power plants with emissions that may not be visible 0.5 and 1 statute mile northeast of arpt. Dspcd thld marked with NSTD chevrons. Rwy 16 ID is NSTD distance from rwy end. Trees and bldgs in trsn sfcs.

AIRPORT MANAGER: 253-720-4546**COMMUNICATIONS: CTAF** 122.9**CLEARANCE DELIVERY PHONE:** For CD ctc Seattle Apch at 206-214-4723.

SPOKANE

FELTS FLD (SFF)(KSFF) 4 NE UTC-8(-7DT) N47°40.98' W117°19.35'

SEATTLE

1957 B LRA NOTAM FILE SFF

L-13B

RWY 04L-22R: H4499X140 (CONC) S-30 MIRL

IAP, AD

RWY 04L: REIL. VASI(V2L)—GA 3.0° TCH 50'.

RWY 22R: MALSR. VASI(V2R)—GA 3.5° TCH 44'. Tree. Rgt tfc.

RWY 04R-22L: H2650X75 (ASPH) S-30

RWY 04R: Rgt tfc.

RWY 22L: PAPI(P4L)—GA 3.8° TCH 39'. Tree.

RUNWAY DECLARED DISTANCE INFORMATION

RWY 04L: TORA-4499 TODA-4499 ASDA-4499 LDA-4499

RWY 04R: TORA-2650 TODA-2650 ASDA-2650 LDA-2650

RWY 22L: TORA-2650 TODA-2650 ASDA-2650 LDA-2650

RWY 22R: TORA-4499 TODA-4499 ASDA-4499 LDA-4499

SERVICE: S4 FUEL 100LL, JET A1+ OX 3, 4 LGT When twr clsd
 ACTIVATE MIRL Rwy 04L-22R, MALSR Rwy 22R and REIL 04L-CTAF.
 VASI Rwy 04L and VASI Rwy 22R opr continuously. PAPI Rwy 22L opr
 SR-SS. Rwy 22L PAPI unusable byd 5° right side of cntrln.

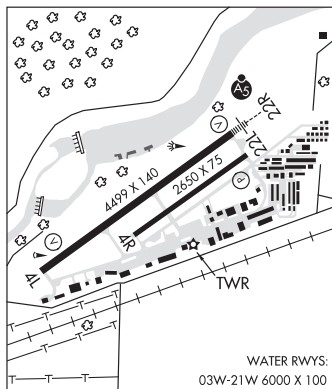
AIRPORT REMARKS: Attended 1400-0400Z. Waterfowl and birds on and in/ov arpt. Lgtd crane 1953' MSL (200' AGL) 1.25 NM east indef. Acft with tail heights over 20' must ctc twr prior to taxi. Twr unable to provide ATC svc on perimeter twy due to movement of unctd gnd tfc. Portions of Twy B not visible from twr. PPR for rotorwing acft conducting hover ops above 10' AGL in non-movement area ctc twr. Cold temperature airport. Altitude correction required at or below -16C. Flight Notification Service (ADCUS) avbl.

AIRPORT MANAGER: 509-455-6419**WEATHER DATA SOURCES:** ASOS 120.55 (509) 535-3290.**COMMUNICATIONS: CTAF** 132.5 **ATIS** 120.55 **UNICOM** 122.95

SPOKANE RCO 122.6 (SEATTLE RADIO)

Ⓡ SPOKANE APP/DEP CON 133.35

TOWER 132.5 (1400-0400Z) GND CON 121.7 CLNC DEL 121.7

CLEARANCE DELIVERY PHONE: For CD if una to ctc on FSS freq, ctc Seattle ARTCC at 253-351-3694.**AIRSPACE:** CLASS D svc 1400-0400Z; other times CLASS E.

CONTINUED ON NEXT PAGE

NW, 16 MAY 2024 to 11 JUL 2024