

DOUGLAS

CONVERSE CO (DGW)(KDGW) 3 N UTC-7(-6DT) N42°47.83' W105°23.15'

CHEYENNE  
H-3F, 5A, L-12F  
IAP

4933 B NOTAM FILE DGW MON Airport

RWY 11-29: H6534X100 (ASPH) MIRL 0.4% up SE

RWY 11: REIL. PAPI(P2L)—GA 3.0° TCH 33'.

RWY 29: REIL. PAPI(P2L)—GA 3.0° TCH 45'.

RWY 05-23: 4760X75 (GRVL-DIRT) S-12.5 MIRL 0.3% up NE

RWY 23: PAPI(P2L)—GA 3.0° TCH 45'. Hill.

SERVICE: S4 FUEL 100LL, JET A LGT ACTVT REIL Rwy 11 and 29; MIRL Rwy 05-23 and 11-29 dalgt hrs-122.8. MIRL Rwy 05-23 and 11-29 preset to low instst dark hrs, to incr instst-122.8. PAPI Rwy 11, 23 and 29 opr consly.

AIRPORT REMARKS: Attended Mon-Fri 1330-0000Z, Sat-Sun 1500-0000Z. Fuel after hrs see phone numbers posted in trml lobby. Call out fee will apply. Wildlife on and invof arpt. Retro-reflective markers along all twys.

AIRPORT MANAGER: 307-358-4924

WEATHER DATA SOURCES: ASOS 135.225 (307) 358-4448. Opr full-time 0700-0659Z.

COMMUNICATIONS: CTAF/UNICOM 122.8

DOUGLAS RCO 122.4 (CASPER RADIO)

Ⓡ DENVER CENTER APP/DEP CON 135.6

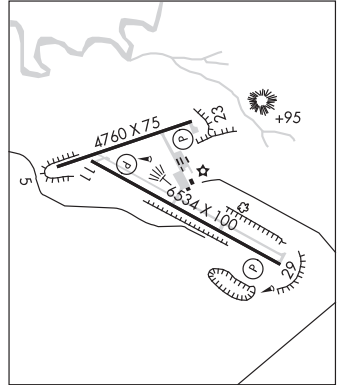
CLEARANCE DELIVERY PHONE: For CD if una to ctc on FSS freq, ctc Denver ARTCC at 303-651-4257.

RADIO AIDS TO NAVIGATION: NOTAM FILE DGW.

HIPSHER (VL) (DH) VOR/DME 115.75 IIP Chan 104(Y) N42°40.57' W105°13.57' 304° 10.1 NM to fld. 4906/12E.

VOR unusable:

- 165°-309° byd 40 NM
- 310°-320° byd 40 NM blo 8,300'
- 310°-320° byd 53 NM
- 321°-334° byd 40 NM
- 335°-345° byd 40 NM blo 7,500'
- 335°-345° byd 56 NM
- 346°-040° byd 40 NM



DUBOIS MUNI (DUB)(KDUB) 3 NW UTC-7(-6DT) N43°32.92' W109°41.45'

SALT LAKE CITY  
H-3E, L-11D

7299 B TPA—See Remarks NOTAM FILE CPR

RWY 11-29: H6700X75 (ASPH) S-24 PCN 8 F/C/Y/T MIRL 0.9% up W

RWY 11: PAPI(P2L)—GA 3.0° TCH 42'. Fence.

RWY 29: REIL. PAPI(P2L)—GA 3.0° TCH 43'. Rgt tfc.

SERVICE: FUEL 100LL, JET A LGT ACTVT REIL Rwy 29, PAPI Rwy 11 and Rwy 29 and MIRL Rwy 11-29—CTAF.

AIRPORT REMARKS: Unattended. Fuel avbl 24 hours self serve credit card. TPA—All traffic patterns to north of rwy because of mtns south.

AIRPORT MANAGER: 307-455-2100

WEATHER DATA SOURCES: AWOS-3PT 118.275 (307) 455-2211.

COMMUNICATIONS: CTAF 122.9

CLEARANCE DELIVERY PHONE: For CD ctc Salt Lake ARTCC at 801-320-2568.

RADIO AIDS TO NAVIGATION: NOTAM FILE CPR.

BOYSEN RESERVOIR (VH) (DH) VOR/DME 117.8 BOY Chan 125 N43°27.79' W108°17.98' 259° 61.0 NM to fld. 7550/16E.

VOR unusable:

- 014°-035° byd 40 NM
- 073°-076° byd 40 NM
- 115°-120° byd 40 NM
- 264°-274° byd 40 NM blo 14,000'
- 264°-274° byd 81 NM
- 275°-285° byd 40 NM
- 357°-005° byd 40 NM

