

CONTINUED FROM PRECEDING PAGE

AIRSPACE: CLASS D svc 1400-0600Z± 01 Apr - 30 Sep; 1500-0500Z± 01 Oct- 31 Mar; Mon-Fri exc hol; other times CLASS E.

RADIO AIDS TO NAVIGATION: NOTAM FILE DGW.

HIPSHER (VL) (DH) VORW/DME 115.75 IIP Chan 104(Y) N42°40.57' W105°13.57' 126° 33.4 NM to fld. 4906/12E.

VOR unusable:

- 165°-309° byd 40 NM
- 310°-320° byd 40 NM blo 8,300'
- 310°-320° byd 53 NM
- 321°-334° byd 40 NM
- 335°-345° byd 40 NM blo 7,500'
- 335°-345° byd 56 NM
- 346°-040° byd 40 NM

NDB (HW) 280 GYZ N42°14.40' W104°42.86' 321° 1.3 NM to fld. 4489/11E. NOTAM FILE GUR.

NDB unmntd when ATCT clsd

COMM/NAV/WEATHER REMARKS: Required call to Guernsey ATCT prior to entering R-7001/R-7002. AN/FMQ-23 automated obs sys in use; briefing svc avbl fm 25 OWS DSN 228-6598/6599/6588 C520-228-6598.

HARFORD FLD (See CASPER on page 293)

HIPSHER N42°40.57' W105°13.57' NOTAM FILE DGW.

CHEYENNE

(VL) (DH) VORW/DME 115.75 IIP Chan 104(Y) 304° 10.1 NM to Converse Co. 4906/12E.

L-12F

VOR unusable:

- 165°-309° byd 40 NM
- 310°-320° byd 40 NM blo 8,300'
- 310°-320° byd 53 NM
- 321°-334° byd 40 NM
- 335°-345° byd 40 NM blo 7,500'
- 335°-345° byd 56 NM
- 346°-040° byd 40 NM

HOT SPRINGS CO (See THERMOPOLIS on page 316)

HULETT MUNI (W43) 2 SE UTC--(6DT) N44°39.77' W104°34.07'

BILLINGS

4264 B NOTAM FILE CPR

H-1F, 2H, L-12F, 13E

RWY 13-31: H5500X75 (ASPH) S-12.5 MIRL 1.3% up SE

IAP

RWY 13: REIL. PAPI(P2L)—GA 3.0° TCH 38'.

RWY 31: REIL. PAPI(P2L)—GA 4.0° TCH 44'. Hill. Rgt ttc.

SERVICE: FUEL 100LL, JET A LGT ACTVT REIL Rwy 13 and 31; PAPI Rwy 13 and 31; MIRL 13-31—CTAF.

AIRPORT REMARKS: Unattended. 24 hr self svc credit card fuel avbl. Devils Tower National Monument lctd aprx 7 miles southwest of arpt. Voluntary 2 mile flgt avoidance radius in effect Jan-May and Jul-Dec. Voluntary 3 mile flgt avoidance radius in effect in Jun. Retro-reflective markers along twys.

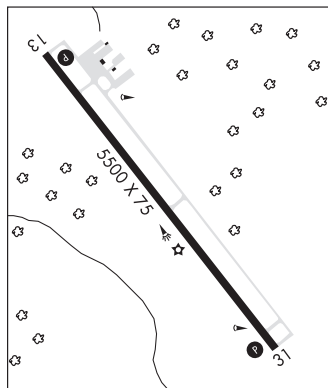
AIRPORT MANAGER: 307-467-5771

WEATHER DATA SOURCES: AWOS-3PT 128.775 (307) 467-5575.

COMMUNICATIONS: CTAF/UNICOM 122.8

Ⓡ DENVER CENTER APP/DEP CON 127.95

CLEARANCE DELIVERY PHONE: For CD ctc Denver ARTCC at 303-651-4257.



CONTINUED ON NEXT PAGE

CONTINUED FROM PRECEDING PAGE

RADIO AIDS TO NAVIGATION: NOTAM FILE GCC.

GILLETTE (VH) (H) VORW/DME 114.6 GCC Chan 93 N44°20.87' W105°32.61' 056° 46.0 NM to fld. 4336/9E.

VOR unusable:

053°-157° byd 40 NM
 158°-168° byd 40 NM blo 10,000'
 158°-168° byd 56 NM
 169°-188° byd 40 NM
 189°-199° byd 40 NM blo 8,500'
 189°-199° byd 46 NM
 200°-238° byd 40 NM
 253°-278° byd 20 NM blo 8,000'
 259°-279° byd 40 NM
 280°-320° byd 40 NM

DME unusable:

163°-193° byd 25 NM blo 10,300'
 193°-268° byd 20 NM blo 8,000'
 193°-268° byd 30 NM blo 13,000'
 268°-333° byd 22 NM blo 10,500'

HUNT FLD (See LANDER on page 307)

JACKSON HOLE (JAC)(KJAC) 7 N UTC-7(-6DT) N43°36.44' W110°44.27'

SALT LAKE CITY

6451 B Class I, ARFF Index B NOTAM FILE JAC MON Airport

H-3E, L-11D

RWY 01-19: H6300X150 (ASPH-GRVD) S-120, D-187, 2S-175,
 2D-287 PCR 508 F/C/X/T. HIRL CL 0.6% up N

IAP, AD

RWY 01: MALS. PAPI(P4L)—GA 3.0° TCH 50'. RVR-TMR Road.

RWY 19: MALS. PAPI(P4R)—GA 3.0° TCH 53'. RVR-TMR

RUNWAY DECLARED DISTANCE INFORMATION

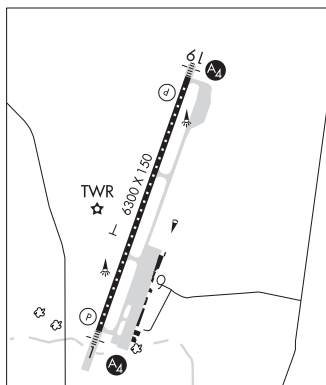
RWY 01: TORA-6300 TODA-6300 ASDA-6300 LDA-6300

RWY 19: TORA-6300 TODA-6300 ASDA-6300 LDA-6300

SERVICE: S2 FUEL 100LL, JET A OX 3 LGT When ATCT clsd ACTVT
 MALS Rwy 01 and 19; HIRL Rwys 01-19; RCLS Rwy 01-19; twy
 lgts; WDI—CTAF.

NOISE: NS ABTMT procedures in effect for acft departures on Rwy 19. Ctc
 arpt management at 307-733-7682.

AIRPORT REMARKS: Attended 1400-0430Z†. On call H24 phone
 307-733-4767. Hang gliding ops 9 miles south of arpt near ski area
 and 9 miles south-southwest of arpt along the ridge. Balloon ops invof
 arpt, west and southwest, May-Oct. Sage grouse on and invof arpt
 Apr-Oct. 35'-53' trees 700'-800' west of thld Rwy 01. Possible
 severe winter cond from Nov-Apr. No arpt info or snow removal
 guaranteed during hrs of non-attendance. 307-733-7682. Paved
 950 x 200 ft safety area at the dep end of Rwy 19; not usbl for per
 calculations; plowed and broomed durg winter. Cold temperature airport. Altitude correction required at or below -22C.
 Deicing pad located at north end of Twy A. All stage 2 acft, regardless of weight, prohibited. Acft that fail to touch down
 within the first third of Rwy 01-19 sometimes fail to stop on the rwy and are at risk for a rwy excursion. Acft pushing
 back fm trml cause cgstn, making A2 unavbl. Coord rwy exits with twr. For public health and safety flts, ctc arpt manager
 at 307-733-7682.



AIRPORT MANAGER: (307) 733-7695

WEATHER DATA SOURCES: AWOS-3PT (307) 739-9108 SAWRS 1300-0500Z†.

COMMUNICATIONS: CTAF 118.075 D-ATIS 120.625 UNICOM 122.95

RCO 122.2 (CASPER RADIO)

Ⓡ SALT LAKE CENTER APP/DEP CON 133.25

TOWER 118.075 (1400-0400Z†) GND CON 124.55

CLEARANCE DELIVERY PHONE: For CD if una to ctc on FSS freq, ctc JAC twr gnd at 124.55 durg nml oprg hrs. Outside of nml
 oprg hrs, ctc Salt Lake ARTCC at 801-320-2568.

AIRSPACE: CLASS D svc 1400-0400Z†; other times CLASS E.

CONTINUED ON NEXT PAGE