

PINE (1U9) 1 S UTC-7(-6DT) N43°27.98' W115°18.60'
 4232 NOTAM FILE BOI
RWY 16-34: 2300X125 (TURF)
RWY 16: Road.
RWY 34: Road. Rgt tfc.

SALT LAKE CITY

AIRPORT REMARKS: Unattended. No winter maintenance. No line of sight btn rwy ends. Recommend land Rwy 34 and tkf Rwy 16 when wind conditions permit. Rwy 16-34 edges and thlds marked with white rocks. Rwy has sideslope, downhill from west to east.

AIRPORT MANAGER: 208-334-8775

COMMUNICATIONS: CTAF 122.9

CLEARANCE DELIVERY PHONE: For CD ctc Big Sky Apch at 208-364-5860/5861.

POCATELLO RGNL (PIH)(KPIH) 7 NW UTC-7(-6DT) N42°54.59' W112°35.76'

SALT LAKE CITY

4452 B Class I, ARFF Index A NOTAM FILE PIH
RWY 03-21: H9059X150 (ASPH-PFC) S-100, D-160, 2S-175, 2D-265 PCN 64 F/B/X/T HIRL
RWY 03: REIL. PAPI(P4L)—GA 3.0° TCH 53'.
RWY 21: MALSR. PAPI(P4L)—GA 3.0° TCH 52'. RVR-T
RWY 17-35: H7150X100 (ASPH-GRVD) S-74, D-110, 2D-199 PCN 29 F/B/X/T MIRL
RWY 17: REIL. PAPI(P4L)—GA 3.0° TCH 45'.
RWY 35: PAPI(P4L)—GA 3.0° TCH 45'. Pole.

H-3D, L-11C
 IAP, AD

RUNWAY DECLARED DISTANCE INFORMATION

RWY 03: TORA-9059 TODA-9059 ASDA-9059 LDA-9059
RWY 17: TORA-7150 TODA-7150 ASDA-7150 LDA-7150
RWY 21: TORA-9059 TODA-9059 ASDA-9059 LDA-9059
RWY 35: TORA-7150 TODA-7150 ASDA-7150 LDA-7150

SERVICE: S4 FUEL 100LL, JET A1, A1+ OX 3, 4 LGT Aft ATCT clsd acvtv MALSR Rwy 21; REIL Rwy 17 and Rwy 03; PAPI Rwy 03, Rwy 21, Rwy 17 and Rwy 35; MIRL Rwy 17-35; HIRL Rwy 03-21—CTAF.

AIRPORT REMARKS: Attended 1300-0500Z. For service other times call 1-800-350-0737. Afd cond unmonitored 0630-1300Z; daily exc air carrier ops and 24 hr PPR 208-234-6154 or 208-241-7949. Additional fees apply. Flocks of waterfowl invof arpt. Twp G has no edge lgts or reflectors, rstd to day use only. Radio cti acft 1 mile east of arpt blo 400' AGL. 72 hrs PPR for unscheduled air carrier ops with more than 30 pax seats call admin 208-234-6154 or ops 208-241-7949. Additional fees apply.

AIRPORT MANAGER: 208-234-6154

WEATHER DATA SOURCES: ASOS 135.625 (208) 235-1287.

COMMUNICATIONS: CTAF 119.1 ATIS 135.625 208-232-2269 UNICOM 122.95

RCO 122.3 (BOISE RADIO)

Ⓡ SALT LAKE CENTER APP/DEP CON 128.35

TOWER 119.1 (1300-0500Z) GND CON 121.9

CLEARANCE DELIVERY PHONE: For CD if una to ctc on FSS freq, ctc Salt Lake ARTCC at 801-320-2568.

AIRSPACE: CLASS D svc 1300-0500Z; other times CLASS E.

RADIO AIDS TO NAVIGATION: NOTAM FILE PIH.

(H) (H) VOR/DME 112.6 PIH Chan 73 N42°52.22' W112°39.13' 029° 3.4 NM to fld. 4433/17E.

VOR unusable:

107°-120° byd 25 NM blo 17,000'

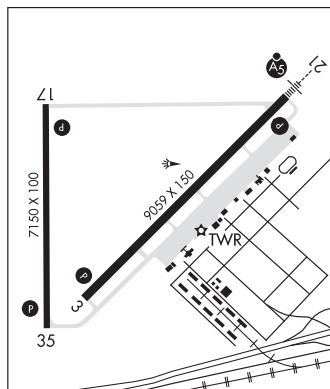
DME unusable:

060°-125° byd 25 NM blo 17,000'

165°-175° byd 35 NM blo 13,000'

ILS/DME 110.3 I-PIH Chan 40 Rwy 21. Class IE. Unmonitored when ATCT clsd.

COMM/NAV/WEATHER REMARKS: Freq 121.5 not avbl at twr. FBO monitors 122.95 and 123.0.



PORThILL

ECKHART INTL (1S1) 0 W UTC-8(-7DT) N48°59.43' W116°30.12'

GREAT FALLS

1758 LRA NOTAM FILE BOI

RWY 15-33: 3650X175 (TURF)

RWY 15: Trees.

RWY 33: Road.

AIRPORT REMARKS: Unattended. Rwy 15 do not use asph twy ptn for tkof. Recommend land Rwy 33; tkf Rwy 15 when wind condition permits. No winter maintenance. Rwy 15-33 edges and thld marked with white rocks. +25' hop poles located adjacent to both sides of rwy. Acft prkg ltd to two hrs in cust trml area; longer term prkg avbl to the west of Rwy end 15-btn asph twy & plant.

AIRPORT MANAGER: 208-334-8775

CONTINUED ON NEXT PAGE

NW, 16 MAY 2024 to 11 JUL 2024

CONTINUED FROM PRECEDING PAGE

COMMUNICATIONS: CTAF/UNICOM 122.8

CLEARANCE DELIVERY PHONE: For CD ctc Seattle ARTCC at 253-351-3694.

PRAIRIE

SMITH PRAIRIE (2U0) 2 SE UTC-7(-6DT) N43°29.90' W115°32.82'

SALT LAKE CITY

4958 NOTAM FILE BOI

RWY 06-24: 5400X150 (TURF-DIRT) 1.6% up NE**RWY 06:** Fence.**RWY 24:** Bldg.**AIRPORT REMARKS:** Unattended. No winter maintenance. Recommend land Rwy 06, tkf Rwy 24, when wind conditions permit.

Rwy 06-24 edges and thlds marked with white rocks. No telephone avbl at arprt.

AIRPORT MANAGER: 208-334-8775**COMMUNICATIONS:** CTAF 122.9**CLEARANCE DELIVERY PHONE:** For CD ctc Big Sky Apch at 208-364-5860/5861.**PRESTON** (U10) 2 NW UTC-7(-6DT) N42°06.42' W111°54.75'

SALT LAKE CITY

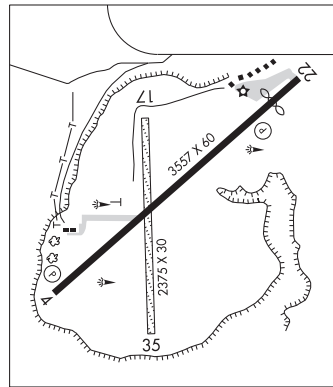
4728 B NOTAM FILE BOI

RWY 04-22: H3557X60 (ASPH) S-12 MIRL**RWY 04:** REIL. PAPI(P2L)—GA 3.0° TCH 44'.**RWY 22:** PAPI(P2L)—GA 3.0° TCH 44'. Thld dsplcd 384'. Road.**RWY 17-35:** 2375X30 (GRVL-DIRT)**SERVICE:** S2 FUEL 100LL LGT ACTVT REIL Rwy 04: MIRL Rwy 04-22—CTAF. PAPI Rwy 04 and Rwy 22 opr consly. Rwy 22 VGSI unusbl byd 4.0 NM fm thr and does not prvd obstn clnc.**AIRPORT REMARKS:** Attended dalgt hrs. Rwy 17-35 CLOSED winter. Lctd on plateau. Sharp dropoff near thr Rwys 04, 17, and 35. Rwy 22 dsplcd thld marked with dsplcd thld bar only. Rwy 17-35 grvl sfc used by crop dusters. 3 windsocks (lgt) and wind tee.**AIRPORT MANAGER:** 208-852-2151**COMMUNICATIONS:** CTAF/UNICOM 122.8**CLEARANCE DELIVERY PHONE:** For CD ctc Salt Lake ARTCC at 801-320-2568.**RADIO AIDS TO NAVIGATION:** NOTAM FILE MLD.**MALAD CITY (VH) (DH) VOR/DME** 117.4 MLD Chan 121
N42°11.99' W112°27.07' 086° 24.7 NM to fld.
7330/17E.

VOR unusable:

009°-018° byd 40 NM
019°-029° byd 40 NM blo 15,000'
019°-029° byd 68 NM
030°-035° byd 40 NM
055°-068° byd 40 NM blo 18,000'
094°-104° byd 40 NM
157°-167° byd 25 NM blo 11,000'
244°-247° byd 40 NM
257°-259° byd 40 NM
301°-305° byd 40 NM
313°-319° byd 40 NM

DME unusable:

005°-025° byd 30 NM blo 14,000'
157°-167° byd 25 NM blo 11,000'**PRIEST LAKE USFS** (See NORDMAN on page 74)