

LAKE CHARLES RGNL (LCH)(KLCH) 5 S UTC-6(-5DT) N30°07.57' W93°13.41'

HOUSTON

15 B LRA Class I, ARFF Index B NOTAM FILE LCH MON Airport

H-7D, L-21B, 22E, GOMW

RWY 15-33: H6500X150 (CONC-GRVD) S-100, D-145, 2S-175,

IAP, AD

2D-260 HIRL

RWY 15: MALSR. PAPI(P4L)—GA 3.0° TCH 70'. RVR-TM Pole. Rgt ttc.

RWY 33: MALSF. PAPI(P4R)—GA 3.0° TCH 54'. RVR-M

RWY 05-23: H5200X100 (ASPH) S-70, D-90, 2S-114, 2D-140

MIRL

RWY 05: REIL. PAPI(P4L)—GA 3.0° TCH 49'. Tree.

RWY 23: REIL. VASI(V4L)—GA 3.0° TCH 47'. Rgt ttc.

RUNWAY DECLARED DISTANCE INFORMATION

RWY 05: TORA-5200 TODA-5200 ASDA-5200 LDA-5200

RWY 15: TORA-6500 TODA-6500 ASDA-6500 LDA-6500

RWY 23: TORA-5200 TODA-5200 ASDA-5200 LDA-5200

RWY 33: TORA-6500 TODA-6500 ASDA-6500 LDA-6500

SERVICE: S4 FUEL 100LL, JET A1+ LGT When twr clsd ACTIVATE

MALSR Rwy 15, MALSF Rwy 33, HIRL Rwy 15-33, MIRL Rwy

05-23—CTAF. PAPI Rwy 33 opr consly.

AIRPORT REMARKS: Attended 1100-0430Z†. Birds on and in vicinity of arpt.

Svc available on request Mon-Fri 1400-2230Z† except holidays call

arpt manager 337-477-6051 ext 0. Control twr blind spot on Taxiway

J. Rwy 15-33 south 900' grooved. Flight Notification Service

(ADCUS) available.

AIRPORT MANAGER: 337-477-6051**WEATHER DATA SOURCES:** ASOS (337) 477-3371 LAWRS.**COMMUNICATIONS:** CTAF 120.7 ATIS 118.75 UNICOM 122.95

RCO 122.3 (DE RIDDER RADIO)

Ⓡ APP/DEP CON 119.35 (West) 119.8 (East) 119.75 (Offshore helicopter opr) (1200-0400Z†) 119.75 OTS indef.

Ⓡ HOUSTON CENTER APP/DEP CON 124.7 (0400-1200Z†)

TOWER 120.7 (1200-0400Z†) GND CON 121.8 CLNC DEL 126.25

CLEARANCE DELIVERY PHONE: For CD if una to ctc on FSS freq, ctc Houston ARTCC at 281-230-5622.**AIRSPACE:** CLASS D svc 1200-0400Z†; other times CLASS E.

TRSA ctc APP CON within 30 NM

RADIO AIDS TO NAVIGATION: NOTAM FILE LCH.

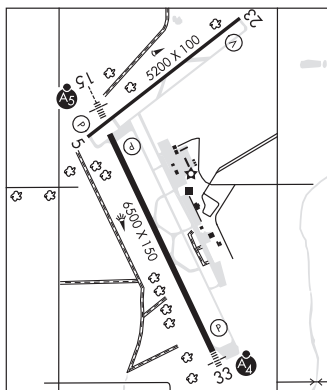
(H) (H) VORTACW 113.4 LCH Chan 81 N30°08.49' W93°06.33' 254° 6.2 NM to fld. 20/7E.

VOR unusable:

181°-359° byd 30 NM blo 1,500'

ILS/DME 109.1 I-LCH Chan 28 Rwy 15. Class IB. Unmonitored when ATCT clsd.

ASR (1200-0400Z†)

**LAKE PROVIDENCE****BYERLEY** (ØM8) 2 N UTC-6(-5DT) N32°49.55' W91°11.26'

MEMPHIS

106 B NOTAM FILE DRI

L-18F

RWY 17-35: H3196X75 (ASPH) S-4

RWY 17: Thld dspcld 175'. Road.

RWY 35: Thld dspcld 530'. Trees.

SERVICE: LGT Dspcld thld lghts OTS indef. Rotating bcn OTS indef.**AIRPORT REMARKS:** Unattended. Day VFR only. Rwy 17 dspcld thld

markings NSTD, no arrows or chevrons. Rwy 35 dspcld thld markings

incomplete—no arrows/chevrons. No hold short line east side of Rwy

35. West apron gravel and potholes.

AIRPORT MANAGER: (318) 282-9263**COMMUNICATIONS:** CTAF 122.9**CLEARANCE DELIVERY PHONE:** For CD ctc Memphis ARTCC at

901-368-8453/8449.

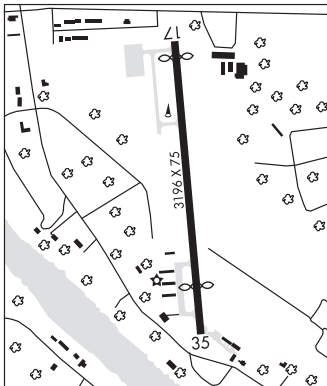
RADIO AIDS TO NAVIGATION: NOTAM FILE GLH.

GREENVILLE (VL) (DH) VOR/DME 114.25 GLH Chan 89(Y)

N33°31.41' W90°58.98' 190° 43.0 NM to fld. 130/4E.

VOR unusable:

144°-157° byd 40 NM

**LAKEFRONT** (See NEW ORLEANS on page 116)