

GREENWOOD—LEFLORE (GWO)(KGWO) 6 E UTC-6(-5DT) N33°29.60' W90°05.20'

162 B NOTAM FILE GWO MON Airport

RWY 18-36: H6501X150 (ASPH) S-100, D-176, 2S-175, 2D-300, 2D/2D2-560 HIRL**RWY 18:** MALSR.**RWY 36:** REIL. PAPI(P4L)—GA 3.0° TCH 50'.**RWY 05-23:** H5011X150 (ASPH) S-30 MIRL 0.3% up NE**RWY 05:** VASI(V4L)—GA 3.0° TCH 33'. Trees.**RWY 23:** REIL. PVASI(PSIR). Trees.**SERVICE:** S4 FUEL 100LL, JET A, A1+ LGT When twr clsd, actvt MALSR Rwy 18; PAPI Rwy 36; MIRL Rwy 05-23; HIRL Rwy 18-36—CTAF. VASI Rwy 05 opr consly. Rwy 05-23 lgts OTS indef.**AIRPORT REMARKS:** Attended continuously. CLSD 2 days each at Thanksgiving and Christmas, 1 day for New Year's. Fuel avbl Mon-Fri 1500-0000Z†, Sat-Sun 1600-2200Z†. Fee for fuel aft hrs call 662-392-3988, 662-392-8899 or 662-455-5530 for svc aft hrs. Powerplant and airframe repairs in emerg or by appt. AMGR limits GWT Rwy 05-23 to S-42, D-60 in unusual situations. Pilots must provide their own tiedown ropes.**AIRPORT MANAGER:** 662-453-1526**WEATHER DATA SOURCES:** ASOS 119.975 (662) 453-3304.**COMMUNICATIONS:** CTAF 118.35 UNICOM 122.95

RCO 122.2 (GREENWOOD RADIO)

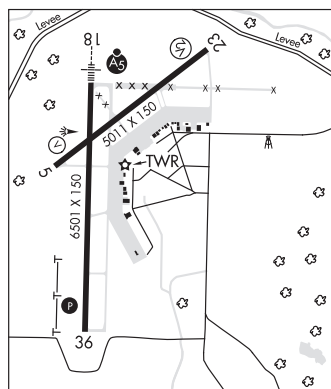
Ⓜ MEMPHIS CENTER APP/DEP CON 132.5

TOWER 118.35 (1400-0000Z‡) **GND CON** 125.55 **CLNC DEL** 125.55**CLEARANCE DELIVERY PHONE:** For CD ctc Memphis ARTCC at 901-368-8453/8449.**AIRSPACE:** CLASS D svc 1400-0000Z‡; other times CLASS E.**RADIO AIDS TO NAVIGATION:** NOTAM FILE GWO.**SIDON (VH) (H) VORTAC** 114.7 SQS Chan 94 N33°27.83' W90°16.64' 077° 9.7 NM to fld. 127/3E.

VOR unusable:

059°-069° byd 40 NM

ILS 111.3 I-GWO Rwy 18. Class IT.



MEMPHIS

H-6J, L-18G

IAP, AD

GRENADA MUNI (GNF)(KGNF) 3 N UTC-6(-5DT) N33°49.95' W89°47.89'

208 B NOTAM FILE GWO

RWY 13-31: H7000X150 (ASPH) S-60, D-200, 2S-175, 2D-300

MIRL

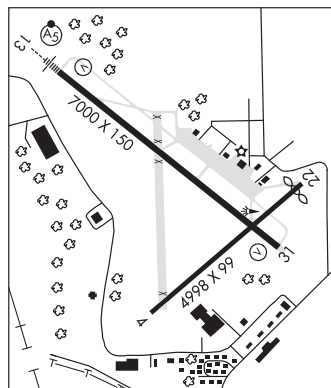
RWY 13: MALSR. VASI(V4L)—GA 3.0° TCH 52'.**RWY 31:** VASI(V4L)—GA 3.0° TCH 56'. Trees.**RWY 04-22:** H4998X99 (ASPH) S-60, D-200, 2S-175, 2D-300**RWY 04:** Trees.**RWY 22:** Thld dspcld 272'. Road.**SERVICE:** FUEL 100LL, JET A**AIRPORT REMARKS:** Attended Mon-Sat on call 662-230-3646, Sun 1900-2300Z‡. Birds and deer invof arpt. Aerobatic acct dalgt hrs; 7000 ft and blw within 3 NM of arpt. Extsv agriculture ops invof arpt SR-SS Mar-Oct. For fuel call 662-230-3646; aft hrs call 662-417-7029 or 662-699-9460. Rwy 13 and 31 200 ft by 150 ft asph ovrn avbl. Rwy 04-22 asph cracked and has depressions. Rwy 04-22 markings faded. Pilots must prvd their own tiedown ropes.**AIRPORT MANAGER:** 662-227-8402**WEATHER DATA SOURCES:** AWOS-3PT 118.025 (662) 227-3407.**COMMUNICATIONS:** CTAF/UNICOM 122.8

Ⓜ MEMPHIS CENTER APP/DEP CON 128.5

CLEARANCE DELIVERY PHONE: For CD ctc Memphis ARTCC at 901-368-8453/8449.**RADIO AIDS TO NAVIGATION:** NOTAM FILE GWO.**SIDON (VH) (H) VORTAC** 114.7 SQS Chan 94 N33°27.83' W90°16.64' 044° 32.6 NM to fld. 127/3E.

VOR unusable:

059°-069° byd 40 NM



MEMPHIS

H-6J, L-18G

IAP