

AMARILLO

BUFFALO (1E7) 9 S UTC-6(-5DT) N35°03.83' W101°52.66'
 3640 B NOTAM FILE FTW
RWY 02-20: 6200X150 (TURF) LIRL
RWY 02: Fence.
RWY 20: Tree. Rgt tfc.
RWY 08-26: 1600X102 (TURF)
RWY 08: P-line.
RWY 26: Road.
SERVICE: LGT Dusk-0700Z‡.
AIRPORT REMARKS: Attended irregularly.
AIRPORT MANAGER: 720-412-1132
COMMUNICATIONS: CTAF/UNICOM 122.8
CLEARANCE DELIVERY PHONE: For CD ctc Albuquerque ARTCC at 505-856-4861.

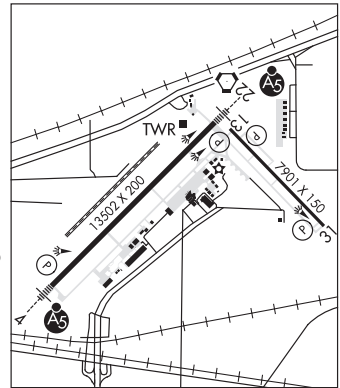
DALLAS-FT WORTH

PALO DURO (1E4) 3 S UTC-6(-5DT) N35°08.62' W101°50.35'
 3639 NOTAM FILE FTW
RWY 17-35: 3700X50 (TURF-GRVD)
RWY 17: P-line.
RWY 35: Fence.
AIRPORT REMARKS: Unattended. Arpt fenced, gates locked, no aces. Rwy not suitable for acft. Arpt hazus for tsnts; rwy not mkd or defined; 63' transmission line acrs thr Rwy 17. Rwy 17-35 soft when wet on S end; loose gvl on rwy, vegetation on rwy.
AIRPORT MANAGER: 806-376-5853
COMMUNICATIONS: CTAF 122.9
CLEARANCE DELIVERY PHONE: For CD ctc Albuquerque ARTCC at 505-856-4861.

DALLAS-FT WORTH

RICK HUSBAND AMARILLO INTL (AMA)(KAMA) 7 E UTC-6(-5DT) N35°13.16' W101°42.36'
 3607 B TPA—See Remarks LRA ARFF Index—See Remarks NOTAM FILE AMA
RWY 04-22: H13502X200 (CONC-GRVD) S-100, D-200, 2S-175, 2D-400 PCN 176R/C/W/T HIRL(NSTD)
RWY 04: MALSR. PAPI(P4L)—GA 3.0° TCH 61'. RVR-T
RWY 22: MALSR. PAPI(P4L)—GA 3.0° TCH 77'. RVR-R
RWY 13-31: H7901X150 (CONC-GRVD) S-100, D-200, 2S-175, 2D-400 PCN 89 R/B/W/T HIRL
RWY 13: REIL. PAPI(P4L)—GA 3.0° TCH 52'.
RWY 31: PAPI(P4L)—GA 3.0° TCH 52'.
RUNWAY DECLARED DISTANCE INFORMATION
RWY 04: TORA-13502 TODA-13502 ASDA-13502 LDA-13502
RWY 13: TORA-7901 TODA-7901 ASDA-7901 LDA-7901
RWY 22: TORA-13502 TODA-13502 ASDA-13502 LDA-13502
RWY 31: TORA-7901 TODA-7901 ASDA-7901 LDA-7901
SERVICE: S4 FUEL 100LL, JET A1+ OX 2, 4 LGT When ATCT clsd, to incr intst and ACTVT MALSR Rwys 04 and 22; REIL Rwy 13; HIRL Rwys 04-22, 13-31; all twys—CTAF.

DALLAS-FT WORTH
 H-6G, L-15B
 IAP, AD



AIRPORT REMARKS: Attended continuously. Tiltrotor acft activity invof arpt. Class I, ARFF Index B. Index C equip avbl upon req. TPA for propeller acft 4502 (895), turbojet acft 5002 (1395), overhead 5502 (1895). Rwy 04-22 center 130' grvd full length. RWY 04 RVR AVBL 1200-0600Z‡ CTC TWR. Rwy 04-22 NSTD HIRL due to spacing. HIRL 50 ft from rwy edge, NSTD dstc fm cntrln—pavement outside rwy edge stripes may not be full strength and depth perception problems may exist during periods of darkness. Flight Notification Service (ADCUS) available. Lndg fee.
AIRPORT MANAGER: 806-354-7721
WEATHER DATA SOURCES: ASOS 118.85 (806) 335-1060.
COMMUNICATIONS: CTAF 118.3 ATIS 118.85 UNICOM 122.95
AMARILLO RCO 122.3 (FORT WORTH RADIO) (0600-1200Z‡)
 (R) APP/DEP CON 119.5 (1200-0600Z‡)
 (R) ALBUQUERQUE CENTER APP/DEP CON 127.85 (0600-1200Z‡)
TOWER 118.3 (1200-0600Z‡) **GND CON** 121.9 **CLNC DEL** 121.65
CLEARANCE DELIVERY PHONE: For CD if una to ctc on FSS freq, ctc Albuquerque ARTCC at 505-856-4561.
AIRSPACE: CLASS C svc ctc APP CON svc 1200-0600Z‡; other times CLASS E.

CONTINUED ON NEXT PAGE

CONTINUED FROM PRECEDING PAGE

RADIO AIDS TO NAVIGATION: NOTAM FILE FTW.

PANHANDLE (H) (H) VORTACW 116.6 PNH Chan 113 N35°14.10' W101°41.94' at fld. 3595/8E.

PANDE NDB (LOMW) 251 AM N35°08.79' W101°48.33' 040° 6.6 NM to fld. 3609/8E. NOTAM FILE AMA.

NDB unmonitored when ATCT clsd.

ILS 110.3 I-AMA Rwy 04. Class IB. LOM PANDE NDB. Unmonitored when ATCT clsd.

LDA/DME 111.1 I-RIQ Chan 48 Rwy 22.

ASR (1200-0600Z‡)

RIVER FALLS (H81) 9 SE UTC-6(-5DT) N35°04.89' W101°45.35'
3585 B NOTAM FILE H81

DALLAS-FT WORTH
H-6G, L-15B

RWY 17-35: H6015X60 (ASPH) MIRL

RWY 17: Thld dsplcd 151'. Road.

RWY 35: Rgt tfc.

RWY 04-22: 3200X70 (TURF)

RWY 04: Rgt tfc.

RWY 22: Bldg.

SERVICE: S2 FUEL 100LL, JET A1+ LGT ACTVT MIRL Rwy 17-35—CTAF. PCL click PTT slowly no more than once per second. Rwy 17 nonstd dsplcd thr lgts-incor colors.

AIRPORT REMARKS: Unattended. For fuel call 806-340-6790. Rwy 17 dsplcd thr not mkd. Dsplcd thr lgts 416 fm rwy end. 5599 ft avbl ngts. Rwy 35 markings faded.

AIRPORT MANAGER: (806) 670-5836

COMMUNICATIONS: CTAF/UNICOM 122.725

CLEARANCE DELIVERY PHONE: For CD ctc Albuquerque ARTCC at 505-856-4861.

RADIO AIDS TO NAVIGATION: NOTAM FILE FTW.

PANHANDLE (H) (H) VORTACW 116.6 PNH Chan 113 N35°14.10' W101°41.94' 189° 9.6 NM to fld. 3595/8E.

TRADEWIND (TDW)(KTDW) 3 SE UTC-6(-5DT) N35°10.19' W101°49.55'
3649 B NOTAM FILE FTW

DALLAS-FT WORTH
H-6G, L-15B
IAP

RWY 17-35: H5098X60 (ASPH) S-16 MIRL

RWY 17: REIL. PVAS(PVSIL)—GA 3.0° TCH 25'. Thld dsplcd 290'.

Fence. Rgt tfc.

RWY 35: REIL. Thld dsplcd 289'. Trees.

RWY 05-23: H3000X60 (ASPH) S-20 MIRL 0.5% up SW

RWY 05: Fence.

RWY 23: Pole. Rgt tfc.

SERVICE: S4 FUEL 100LL, JET A1+ OX3 LGT Actvt MIRL Rwys 05-23 and 17-35—CTAF.

AIRPORT REMARKS: Attended 1300-0400Z‡. Aft hrs svc 806-376-1008. Housing and school surrounds Rwy 23 end.

AIRPORT MANAGER: 806-376-1008

WEATHER DATA SOURCES: AWOS-AV 118.475 (806) 350-7407.

COMMUNICATIONS: CTAF/UNICOM 122.8

Ⓡ AMARILLO APP/DEP CON 119.5 (1200-0600Z‡)

Ⓡ ALBUQUERQUE CENTER APP/DEP CON 127.85 (0600-1200Z‡)

CLNC DEL 125.4

CLEARANCE DELIVERY PHONE: For CD ctc Albuquerque ARTCC at 505-856-4861.

RADIO AIDS TO NAVIGATION: NOTAM FILE FTW.

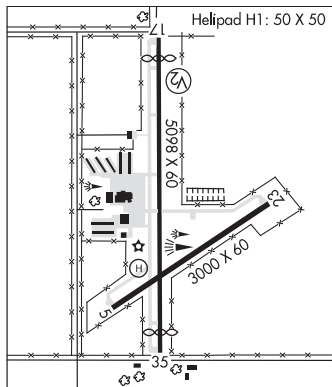
PANHANDLE (H) (H) VORTACW 116.6 PNH Chan 113 N35°14.10' W101°41.94' 230° 7.4 NM to fld. 3595/8E.

PANDE NDB (LOMW) 251 AM N35°08.79' W101°48.33' 317° 1.7 NM to fld. 3609/8E. NOTAM FILE AMA.

NDB unmonitored when ATCT clsd.

• • • • •

HELIPAD H1: H50X50 (ASPH)



AMASON N31°49.97' W94°09.23' NOTAM FILE CXO.
NDB (MHW) 341 CZJ at Center Muni. 329/4E.

HOUSTON
L-19E

AMBASSADOR N32°35.13' W95°06.79' NOTAM FILE FTW.
NDB (MHW) 404 ABG 424/7E. (VFR only).

DALLAS-FT. WORTH