

DENISON N33°49.59' W96°40.13' NOTAM FILE GYI.
NDB (MHW) 341 DNI 179° 6.7 NM to North Texas Rgnl/Perrin Fld. 642/3E.

DALLAS–FT. WORTH
L-17C

DENTON ENTERPRISE (DTO)(KDTO) 3 W UTC-6(-5DT) N33°12.12' W97°11.95'
643 B TPA-1443(800) NOTAM FILE DTO

DALLAS–FT WORTH
COPTER
H-6H, L-17C, A
IAP, AD

RWY 18L-36R: H7002X150 (ASPH) S-70, D-100 MIRL
RWY 18L: MALSR. PAPI(P4L)—GA 3.0° TCH 50'.
RWY 36R: PAPI(P4L)—GA 3.0° TCH 50'. Thld dsplcd 100'. Trees.
RWY 18R-36L: H5003X75 (ASPH) S-30 MIRL 0.3% up N
RWY 18R: PAPI(P4L)—GA 3.0° TCH 42'.
RWY 36L: PAPI(P4L)—GA 3.0° TCH 42'.

RUNWAY DECLARED DISTANCE INFORMATION

RWY 18L:TORA-7002 TODA-7002 ASDA-6502 LDA-6502
RWY 36R:TORA-7002 TODA-7002 ASDA-6602 LDA-6502

SERVICE: S4 FUEL 100LL, JET A LGT Dusk-dawn when ATCT clsd, MIRL Rwy 18L-36R and 18R-38L preset to low intst; to incr intst and ACTVT MALSR Rwy 18—CTAF.

AIRPORT REMARKS: Attended 1200-0400Z†. Arpt closed to ultralights and gliders. Mowing opns on arpt May-Sept. Rwy 18L designated as a calm wind rwy.

AIRPORT MANAGER: 940-349-7736

WEATHER DATA SOURCES: ASOS 119.325 (940) 383-8457.

COMMUNICATIONS: CTAF 119.95 ATIS 119.325 UNICOM 122.95

Ⓡ REGIONAL APP/DEP CON 118.1

TOWER 119.95 (1200-0400Z†) **GND CON** 123.95 **CLNC DEL** 123.95

CLEARANCE DELIVERY PHONE: For CD when ATCT is clsd ctc Regional Apch at 972-615-2799.

AIRSPACE: CLASS D svc 1200-0400Z†; other times CLASS G.

RADIO AIDS TO NAVIGATION: NOTAM FILE FTW.

RANGER (VH) (H) VORTACW 115.7 FUZ Chan 104 N32°53.37' W97°10.77' 351° 18.7 NM to fld. 639/6E.

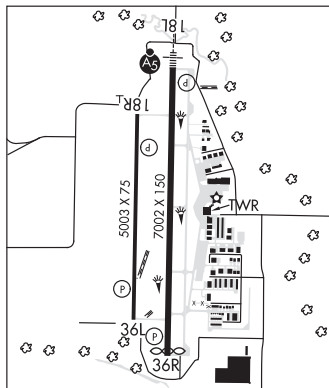
VOR unusable:

275°-290° byd 40 NM

317°-327° byd 40 NM

PINCK NDB (LOMW) 257 DT N33°16.99' W97°11.78' 178° 4.9 NM to fld. 739/4E. NOTAM FILE DTO.

ILS 109.1 I-DTO Rwy 18L. Class IT. LOM PINCK NDB. LOC unusable byd 10° left of course.



DENVER CITY (E57) 1 NW UTC-6(-5DT) N32°58.48' W102°50.71'
3575 B NOTAM FILE FTW

ALBUQUERQUE
H-6G, L-6H

RWY 04-22: H5780X50 (ASPH) S-13 MIRL
RWY 04: PAPI(P2L)—GA 4.5° TCH 64'. Thld dsplcd 350'. Road.
RWY 22: PAPI(P2L)—GA 4.0° TCH 43'. Thld dsplcd 155'. P-line. Rgt tfc.

RWY 08-26: H3960X45 (ASPH) S-13

RWY 08: Thld dsplcd 179'. P-line.

RWY 26: Thld dsplcd 526'. P-line. Rgt tfc.

SERVICE: FUEL 100LL, JET A

AIRPORT REMARKS: Attended irregularly. Fuel 100LL self-serve. Lgtd drilling rigs on and invof arpt. Rwy 26, entrance road and 20' hangars inside prim sfc.

AIRPORT MANAGER: 806-592-5426

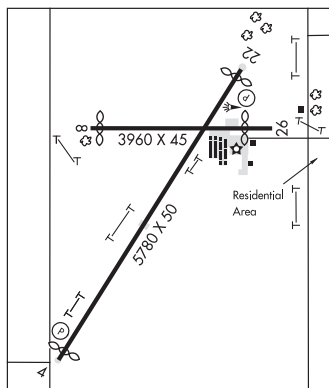
WEATHER DATA SOURCES: AWOS-3PT 118.275 (806) 592-3681.

COMMUNICATIONS: CTAF/UNICOM 122.8

CLEARANCE DELIVERY PHONE: For CD ctc Fort Worth ARTCC at 817-858-7584.

RADIO AIDS TO NAVIGATION: NOTAM FILE HOB.

HOBBS (L) (L) VORTACW 111.0 HOB Chan 47 N32°38.29' W103°16.16' 036° 29.4 NM to fld. 3664/11E.



DEPOO N25°59.02' W97°30.55' NOTAM FILE BRO.
NDB (LOMW) 393 BR 133° 6.5 NM to Brownsville/South Padre Island Intl. 29/3E.

BROWNSVILLE