

## GALVESTON

**SCHOLES INTL AT GALVESTON** (GLS)(KGLS) 3 SW UTC-6(-5DT) N29°15.92'

**HOUSTON  
COPTER  
H-7C, L-19E, 21A, GOMW  
IAP, AD**

W94°51.63'

6 B LRA NOTAM FILE GLS MON Airport

**RWY 18-36:** H6001X150 (CONC) S-74, D-92, 2D-162 MIRL

**RWY 18:** REIL. PAPI(P4L)—GA 3.0° TCH 44'.

**RWY 36:** REIL. PAPI(P4L)—GA 3.0° TCH 45'. Bldg.

**RWY 14-32:** H6000X150 (ASPH-CONC) S-90, D-115, 2D-192 HIRL

**RWY 14:** MALSR. PAPI(P4L)—GA 3.0° TCH 52'.

**RWY 32:** REIL. PAPI(P4L)—GA 3.0° TCH 46'. Bldg.

**RUNWAY DECLARED DISTANCE INFORMATION**

**RWY 14:** TORA-6000 TODA-6000 ASDA-6000 LDA-6000

**RWY 18:** TORA-6001 TODA-6001 ASDA-6001 LDA-6001

**RWY 32:** TORA-6000 TODA-6000 ASDA-6000 LDA-6000

**RWY 36:** TORA-6001 TODA-6001 ASDA-6001 LDA-6001

**SERVICE:** S4 FUEL 100LL, JET A LGT HIRL Rwy 14-32, MIRL Rwy 18-36 preset med instst. When ATCT clsd ACTVT MALSR Rwy 14—CTAF.

**AIRPORT REMARKS:** Attended 1200-0200Z±. Flocks of birds invof arpt blw 200 ft AGL. Hcls oprg on and invof arpt. 100LL aft hrs svc 409-750-0195. 178 ft lgtd bldg 2000 ft NE of Rwy 18 thr. PAEW adj rwy's and twys. Rwy 14-32 first 1,300' NW end is conc. Flight Notification Service (ADCUS) available.

**AIRPORT MANAGER:** 409-797-3590

**WEATHER DATA SOURCES:** ASOS 123.950 (409) 740-5483.

**COMMUNICATIONS:** CTAF 120.575 UNICOM 123.05

GALVESTON RCO 122.2 (MONTGOMERY COUNTY RADIO)

Ⓡ HOUSTON APP/DEP CON 134.45

TOWER 120.575 (1200-0000Z±) GND CON 118.625 CLNC DEL 135.35

**CLEARANCE DELIVERY PHONE:** For CD when ATCT is clsd ctc Houston Apch at 281-443-5844 to cnl IFR at 281-443-5888.

**AIRSPACE:** CLASS D svc 1200-0000Z±; other times CLASS E.

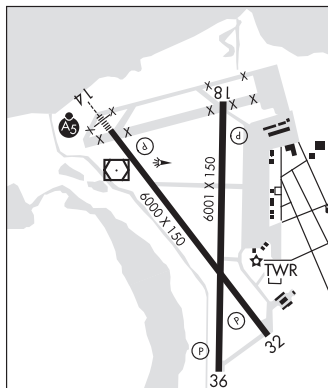
**RADIO AIDS TO NAVIGATION:** NOTAM FILE GLS.

(VH) (DH) VORW/DME 113.0 VUH Chan 77 N29°16.16' W94°52.06' at fld. 4/6E.

VOR unusable.

285°-295° byd 35 NM blo 2,500'

ILS 111.7 I-GLS Rwy 14.



**GALVESTON 209B** GVV N29°07.82' W94°32.79'/121  
AWOS-3 118.25 (832) 917-1465

**HOUSTON, HOUSTON TAC  
L-19E, L-21A, GOMW**

**GARDEN BANKS 668** GUL N27°18.23' W93°32.30'  
AWOS-3 119.025 Winds unreliable.

**L-21B, GOMW**

**GARLAND/DFW HELOPLEX HELIPORT** (T57) 2 SW UTC-6(-5DT) N32°53.22' W96°41.10'

**DALLAS-FT WORTH  
COPTER**

601 B NOTAM FILE FTW

**HELIPAD H1:** H105X105 (CONC) PERIMETER LGTS

**HELIPAD H2:** H54X54 (CONC)

**SERVICE:** S4 FUEL 100LL, JET A LGT Peri lgts low instst SS-SR, to incr instst—CTAF.

**HELIPORT REMARKS:** Attended Mon-Sat 1400-0000Z±, Sun 1500-2300Z±. Helipad H1 egress/ingress north and south.

Helipad H1 648' twr 1 mile north, 34' bldg 170' north, 48' antenna 352' east, 30' bldg 442' south, 35' bldg 379' west. Helipad H2 egress/ingress N. Rwy H2 under construction.

**AIRPORT MANAGER:** 214-349-7000

**COMMUNICATIONS:** CTAF/UNICOM 123.05

**CLEARANCE DELIVERY PHONE:** For CD ctc Regional Apch at 972-615-2799.

**GARNER FLD** (See UVALDE on page 437)

**GARYS** N29°57.52' W97°56.94' NOTAM FILE HYI.  
NDB (LOMW) 272 RU 124° 6.0 NM to San Marcos Rgnl. 819/7E.

**SAN ANTONIO**