

**PALM BEACH INTL** (PBI)(KPBI) 3 W UTC-5(-4DT) N26°40.99' W80°05.74'

**MIAMI**

20 B AOE ARFF Index—See Remarks NOTAM FILE PBI

**H-8I, L-23C**

**RWY 10L-28R:** H10001X150 (ASPH-GRVD) S-120, D-175, 2S-175, 2D-550, 2D/2D2-840 PCN 93 F/B/W/T HIRL CL

**RWY 10L:** MALS R. PAPI(P4R)—GA 3.0° TCH 68'. RVR-TR Thld dsplcd 1200'. Trees.

**RWY 28R:** REIL. PAPI(P4L)—GA 3.0° TCH 70'. RVR-TR Thld dsplcd 811'. Trees.

**RWY 14-32:** H6931X150 (ASPH-GRVD) S-100, D-180, 2S-175, 2D-325, 2D/2D2-400 PCN 67 F/A/W/T MIRL

**RWY 14:** REIL. PAPI(P4R)—GA 3.0° TCH 66'. Trees.

**RWY 32:** REIL. PAPI(P4L)—GA 3.25° TCH 57'. Thld dsplcd 418'. Road.

**RWY 10R-28L:** H3214X75 (ASPH) S-25 PCN 44 F/A/X/T MIRL

**RWY 10R:** REIL. Trees. Rgt tfc.

**RWY 28L:** REIL.

**LAND AND HOLD-SHORT OPERATIONS**

LDG RWY	HOLD-SHORT POINT	AVBL LDG DIST
RWY 10L	14-32	3117
RWY 14	10L-28R	4295
RWY 28R	14-32	3725

**RUNWAY DECLARED DISTANCE INFORMATION**

<b>RWY 10L:</b> TORA-10001 TODA-10001 ASDA-9351 LDA-8151
<b>RWY 10R:</b> TORA-3214 TODA-3214 ASDA-3214 LDA-3214
<b>RWY 14:</b> TORA-6926 TODA-6926 ASDA-6000 LDA-6000
<b>RWY 28L:</b> TORA-3214 TODA-3214 ASDA-3214 LDA-3214
<b>RWY 28R:</b> TORA-10001 TODA-10001 ASDA-9051 LDA-8240
<b>RWY 32:</b> TORA-6926 TODA-6926 ASDA-6926 LDA-6513

**ARRESTING GEAR/SYSTEM**

**RWY 14:** EMAS

**SERVICE:** S4 FUEL 100LL, JET A OX 1, 2, 3, 4

**NOISE:** Noise abatement procedures in effect. Multiengine flight training prohibited SS to SR, Sun and hol, strict environmental operating Stage 2 acft 0300-1200Z† call noise abatement officer 561-471-7467.

**AIRPORT REMARKS:** Attended continuously. Migratory birds on and invof arpt. Class I ARFF Index C. Index D ARFF equipment avbl, 24 hr PPR. Rwy 10R-28L not avbl for sked acf ops with more than 9 pax seats or unsked acf at least 31 pax seats. Rwy 14-32 safety area not std sfc varns. Rwy 10L-28R safety area not std sfc varns. Be alert, Twy L is lctd btn Rwys 10L-28R and 10R-28L. Twy L is wider and longer than Rwy 10R-28L, do not confuse Twy L for rwy. Acft with wingspan of 118' or greater is prohibited on Twy L. Acft with wingspans gtr than 118' may not opr on Twy E, Twy W, Twy Y and Twy F NW of Twy A. 24 hr PPR for acft with wingspans greater than 171'. Acft with wingspans gtr than 49' may not oper simul on Rwy 10R-28L and Twy R. Twy L3 east surface painted holding position sign not std. Be alert, Rwy 28L and Rwy 28R thlds staggered by 5400'. Flight Notification Service (ADCUS) avbl. NOTE: See Special Notices—Arrival Alert.

**AIRPORT MANAGER:** 561-471-7420

**WEATHER DATA SOURCES:** ASOS 123.75 (561) 683-2548. LLWAS. TDWR.

**COMMUNICATIONS:** D-ATIS 123.75 UNICOM 122.95

RCO 122.4 (MIAMI RADIO)

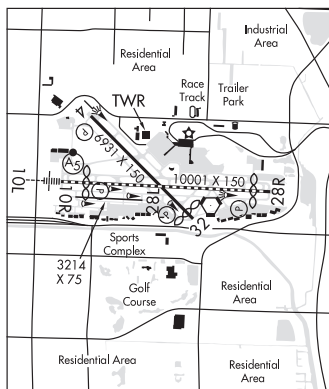
RCO 122.1R 115.7T (MIAMI RADIO)

Ⓡ APP/DEP CON 128.3 125.2 (South)

TOWER 118.75 119.1 GND CON 121.9 CLNC DEL 121.6

CPDLC

PDC



**CONTINUED ON NEXT PAGE**

## CONTINUED FROM PRECEDING PAGE

AIRSPACE: CLASS C svc ctc APP CON.

RADIO AIDS TO NAVIGATION: NOTAM FILE PBI.

(VH) (H) VORTAC 115.7 PBI Chan 104 N26°40.80' W80°05.19' at fld. 16/3W.

VOR unusable:

005°-015° byd 40 NM blo 5,000'

005°-015° byd 63 NM

016°-044° byd 40 NM

052°-062° byd 100 NM

052°-062° byd 40 NM blo 6,000'

052°-062° byd 81 NM blo 8,000'

185°-195° byd 13 NM

209°-219° byd 40 NM

257°-267° byd 40 NM

305°-324° byd 40 NM

332°-348° byd 40 NM

349°-353° byd 40 NM

354°-004° byd 40 NM blo 3,000'

354°-004° byd 53 NM

TACAN AZIMUTH unusable:

286°-296° byd 28 NM

ILS/DME 111.9 I-PBI Chan 56 Rwy 10L. Class IT.

ILS 111.9 I-PWB Rwy 28R. Class IT.

**WHITEHOUSE NOLF** (NEN)(KNEN) TC N30°20.97' W81°52.02'

JACKSONVILLE

AIRSPACE: CLASS D svc ATCT manned during scheduled operations only; other times CLASS G.

H-8H, 12F, L-21D, 24G, A

**WHITING FLD NAS NORTH** (NSE)(KNSE) N 4 N UTC-6(-5DT) N30°43.35' W87°01.43'

NEW ORLEANS

199 B NOTAM FILE NSE Not insp.

H-6K, 8G, L-21C, 22H

RWY 05-23: H6003X200 (ASPH) PCN 31 F/A/W/T HIRL

DIAP, AD

RWY 05: PAPI(P4L)—GA 3.0° TCH 60'.

RWY 23: PAPI(P4L)—GA 3.0° TCH 52'.

RWY 14-32: H6001X200 (ASPH) PCN 23 F/A/W/T HIRL 0.7% up NW

RWY 14: MALSR. PAPI(P4L)—GA 3.0° TCH 51'.

RWY 32: PAPI(P4L)—GA 3.0° TCH 53'.

SERVICE: FUEL 100LL MILITARY—JASU 1(NC-8) FUEL 100LL—F24 tran alert. TRAN ALERT Ltd tran line svc avbl  
1400-2200Z† Mon-Fri only. LGT Avbl durg ops hrs.MILITARY REMARKS: Opr Mon-Fri 1200-0400Z†, clsd Sat, Sun & hol; otr by NOTAM. FPs for Whiting Fld can be smtd to Base  
Ops via fax at C850-623-7356 or e-mail: whtg\_naswf\_baseops.fct@navy.mil. To cfm rctd of FPs ctc fpg dispatcher at  
DSN 868-7598/7597/7654 or C850-623-7598/7597/7654. Smt Whiting Fld FP—fax C850-623-7356 or

whtg\_naswf\_baseops.fct@navy.mil; cfm FP—fpg dispatch D868-7598/7597/7654 or C850-623-7598/7597/7654.

RSTD PPR for tnst prac apch and ldg; ldt tnst prk and svc avbl—duty ops DSN 868-7475, C850-623-7475 and calp or  
email: whtg\_naswf\_airops\_afm@navy.mil. Whiting Fld S unless otherwise ARNG with ops officer. (See Whiting Fld  
NAS-S) 24 hr PPR. CAUTION Trng ops invof all hrs; ponding ocrs aft rain—BRAP. Twy Z and 200 ft inward fm compass rose  
of Twy A not vsb fm ATCT.

WEATHER DATA SOURCES: ASOS (850) 623-7241

COMMUNICATIONS: ATIS 140.0 290.325 (1245-0445Z† Mon-Fri, clsd Sat, Sun and hol)

Ⓡ PENSACOLA APP CON 127.35 291.625 298.9

Ⓡ PENSACOLA DEP CON 127.35

NORTH WHITING TOWER 121.4 306.925 (1245-0445Z† Mon-Fri, clsd Sat, Sun and hol; otr by NOTAM)

GND CON 251.15 CLNC DEL 257.775 PMSV METRO 316.95 (1145-0500Z† Mon-Fri, clsd Sat, Sun and hol) BASE OPS 233.7

AIRSPACE: CLASS C svc ctc APP CON svc 1245-0445Z† Mon-Fri; clsd Sat-Sun &amp; hol or NOTAM; otr times CLASS G..

RADIO AIDS TO NAVIGATION: NOTAM FILE NSE.

(L) TACAN Chan 70 NSE (112.3) N30°43.44' W87°01.08' at fld. 178/2W. unmonitored when twr clsd.

TACAN unusable:

256°-018° byd 25 NM blo 3,000'

DME unusable:

256°-018° byd 25 NM blo 3,000'

256°-055° byd 25 NM

ILS/DME 111.75 I-NSE Chan 54(Y) Rwy 14. Class IE. Glideslope autocoupled apchs NA blo 1,255' MSL.

ASR

COMM/NAV/WEATHER REMARKS: Radar see Terminal FLIP for Radar Minima. DD-1801 wx codes obtained at

<https://fwb.metoc.navy.mil>. METOC aft hr—AWS/Norfolk 1-888-745-6899.