

## JACKSONVILLE

**ALBERT J ELLIS** (OAJ)(KOAJ) 10 NW UTC-5(-4DT) N34°49.75' W77°36.73'

CHARLOTTE

H-9C, 12H, L-35B

IAP, AD

93 B ARFF Index—See Remarks NOTAM FILE OAJ

**RWY 05-23:** H7100X150 (ASPH-GRVD) S-120, D-211, 2S-175,

2D-388 PCN 51 F/A/W/T HIRL

**RWY 05:** MALSR. PAPI(P4L)—GA 3.0° TCH 55'.

**RWY 23:** REIL. PAPI(P4L)—GA 3.0° TCH 47'.

**SERVICE:** S4 FUEL 100LL, JET A LGT Actvt MALSR Rwy 05; REIL

Rwy 23; PAPI Rwy 05 and 23; HIRL Rwy 05-23—CTAF.

**AIRPORT REMARKS:** Attended 1000-0500Z†. For fuel other hrs call 910-347-8366. Class I, ARFF Index B. Clsd to unskd acr opns with more than 30 psgr seats excp PPR call amgr 910-324-1100 or 910-989-3168. Index B ARFF coverage provided during commercial air trc ops. Index C available upon req. Clsd to all mil acft over 17,000 lbs for air carrier ramp ops exc 24 hr PPR. Call arpt mgr 910-324-1100 or 910-989-3168. 180° turns on Rwy 05-23 not authorized for acft 60,000 lbs and over. Field conditions not monitored 0500-1000Z† daily.

**AIRPORT MANAGER:** 910-324-1100

**WEATHER DATA SOURCES:** AWOS-3PT (910) 324-5233 LAWRS.

**COMMUNICATIONS:** CTAF 132.65 UNICOM 122.95 ATIS 124.475 or call

910-324-5233

Ⓡ **WILMINGTON APP/DEP CON** 135.75 (1100-0400Z†)

Ⓡ **WASHINGTON CENTER APP/DEP CON** 124.025 135.75 (0400-1100Z†)

ELLIS TOWER 132.65 (1200-0300Z†)

GND CON 125.4 CLNC DEL 125.4 CLNC DEL 121.4 (When twr clsd)

**CLEARANCE DELIVERY PHONE:** For CD when ATCT clsd, ctc Wilmington Apch at 910-815-4676, or when Apch clsd ctc

Washington ARTCC at 703-771-3587.

**AIRSPACE:** CLASS D svc 1200-0300Z†; other times CLASS E.

**RADIO AIDS TO NAVIGATION:** NOTAM FILE ILM.

**WILMINGTON (H) (H) VORTAC** 117.0 ILM Chan 117 N34°21.10' W77°52.46' 031° 31.4 NM to fld. 29/7W.

VOR portion unusable:

051°-185°

164°-051° blo 17,500'

186°-229° blo 3,000'

230°-315° byd 5 NM blo 17,500'

316°-050° blo 8,000'

TACAN DME unusable:

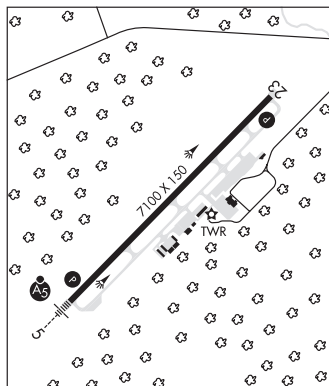
015°-305° byd 30 NM blo 2,500'

TACAN AZIMUTH unusable:

129°-160° byd 30 NM blo 2,500'

**ELLAS NDB (LOMW)** 261 OA N34°45.03' W77°42.27' 052° 6.6 NM to fld. 76/8W. NOTAM FILE OAJ.

**ILS/DME** 108.7 I-OAJ Chan 24 Rwy 05. Class IA. LOM ELLAS NDB. LOM ELLAS NDB unmonitored. LOC unusable byd 15° right of course. Autopilot cpd apch NA blw 900' MSL.



**SKY MANOR** (N22) 8 W UTC-5(-4DT) N34°42.65' W77°35.10'

CHARLOTTE

60 NOTAM FILE RDU

**RWY 08-26:** 3610X85 (TURF)

**RWY 08:** Thld dsplcd 595'. Trees.

**RWY 26:** Trees.

**AIRPORT REMARKS:** Unattended. Be alert deer invof arpt. Arpt is being reconstructed; men and eqpt on and invof Rwy 08-26.

Rwy 08-26 has no markings due to ongoing reconstruction. Pvt road parls rwy on S side 20' from rwy edge.

**AIRPORT MANAGER:** 910-389-3014

**COMMUNICATIONS:** CTAF 122.9

**CLEARANCE DELIVERY PHONE:** For CD ctc Washington ARTCC at 703-771-3587.