

NORTH MYRTLE BEACH

GRAND STRAND (CRE)(KCRE) 1 NW UTC-5(-4DT) N33°48.71' W78°43.44'

CHARLOTTE

H-9C, 12G, L-35A

IAP, AD

32 B NOTAM FILE CRE MON Airport

RWY 05-23: H5997X100 (ASPH) S-76, D-112 PCN 29 F/B/X/T HIRL

RWY 05: REIL. PAPI(P2L)—GA 3.0° TCH 40'. Trees.

RWY 23: MALSR. PAPI(P2R)—GA 2.98° TCH 55'. Trees. Rgt tfc.

SERVICE: FUEL 100LL, JET A **LGT** After 0500Z‡ ACTIVATE HIRL Rwy 05-23, REIL Rwy 05, and MALSR Rwy 23—CTAF.

AIRPORT REMARKS: Attended 1200-0200Z‡. Gulls on and invof arpt. Extv banner tow ops from arpt along coastline 10 NM NE to 20 SW.

AIRPORT MANAGER: 843-448-1580

WEATHER DATA SOURCES: ASOS 119.625 (843) 361-2802.

COMMUNICATIONS: CTAF 124.6 ATIS 119.625 UNICOM 122.95

RCO 122.5 (ANDERSON RADIO)

Ⓡ **MYRTLE BEACH APP/DEP CON** 119.2 (1100-0400Z‡)

Ⓡ **JACKSONVILLE CENTER APP/DEP CON** 134.375 (0400-1100Z‡)

TOWER 124.6 (1200-0200Z‡) **GND CON** 121.8 **CLNC DEL** 121.8

CLEARANCE DELIVERY PHONE: For CD when ATCT clsd ctc Myrtle Beach Apch at 843-477-2727/2704. When MYR Apch clsd ctc Jacksonville ARTCC at 904-845-1592.

AIRSPACE: CLASS D svc 1200-0200Z‡; other times CLASS G.

RADIO AIDS TO NAVIGATION: NOTAM FILE CRE.

(VL) (H) **VORTACW** 114.4 CRE Chan 91 N33°48.83'

W78°43.47' at fld. 27/3W.

TACAN AZIMUTH unusable:

296°-335°

DME unusable:

296°-335°

VOR unusable:

000°-005° byd 40 NM

016°-020° byd 40 NM

040°-053° byd 40 NM blo 2,500'

040°-053° byd 47 NM

060°-085° byd 40 NM

130°-140° byd 40 NM

205°-222° byd 40 NM blo 7,000'

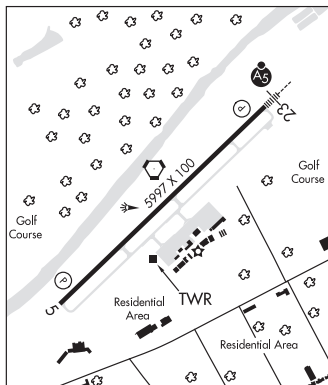
205°-222° byd 82 NM

292°-296° byd 40 NM

296°-308° byd 30NM blo 5,000'

330°-334° byd 40 NM

ILS/DME 111.7 I-CRE Chan 54 Rwy 23. Class IT.



OCONEE CO RGNL (See CLEMSON on page 376)

ORANGEBURG

DRY SWAMP (1DS) 6 S UTC-5(-4DT) N33°23.06' W80°54.42'

CHARLOTTE

180 NOTAM FILE AND

RWY 02-20: 2900X60 (TURF)

RWY 02: Thld dsplcd 900'. Tree.

RWY 20: Thld dsplcd 900'. Tree.

SERVICE: S4 FUEL 100LL

AIRPORT REMARKS: Attended Wed-Mon dawn-dusk. Attended Tues dawn-1700Z‡. Unattended Tues afternoons. Glider ops on and invof arpt.

AIRPORT MANAGER: 803-534-3157

COMMUNICATIONS: CTAF 122.9

CLEARANCE DELIVERY PHONE: For CD ctc Columbia Apch at 803-822-5242 or 803-822-5040.