

CONTINUED FROM PRECEDING PAGE

AIRSPACE: CLASS E svc 1100-0600Z; other times CLASS G.

RADIO AIDS TO NAVIGATION: NOTAM FILE INW.

(VH) (H) VORTACW 112.6 INW Chan 73 N35°03.70' W110°47.70' 110° 4.3 NM to fld. 4913/14E.

VOR unusable:

- 015°-021° byd 40 NM
- 022°-032° byd 40 NM blo 31,000'
- 033°-043° byd 40 NM blo 13,000'
- 033°-043° byd 96 NM
- 044°-050° byd 40 NM
- 073°-077° byd 40 NM
- 120°-160° byd 40 NM
- 161°-171° byd 40 NM blo 16,000'
- 161°-171° byd 48 NM
- 172°-185° byd 40 NM blo 12,000'
- 172°-185° byd 63 NM
- 186°-191° byd 40 NM
- 192°-202° byd 40 NM blo 10,000'
- 192°-202° byd 62 NM
- 203°-215° byd 40 NM blo 14,000'
- 203°-215° byd 77 NM
- 216°-281° byd 40 NM
- 282°-292° byd 40 NM blo 18,000'
- 302°-307° byd 40 NM

**YUMA MCAS/YUMA INTL** (NYL)(KKNYL) MIL/CIV N 3 S UTC-7 N32°39.39' W114°36.36'

213 B TPA—See Remarks AOE Class I, ARFF Index A NOTAM FILE NYL

PHOENIX  
H-4J, L-5A  
IAP, DIAP, AD

**RWY 03L-21R:** H13300X200 (CONC) S-103, D-200, 2D-400

PCN 71 R/C/W/T HIRL

**RWY 03L:** REIL. PAPI(P4L)—GA 3.0° TCH 53'. Rgt tfc.

**RWY 21R:** MALS.R. PAPI(P4L)—GA 3.0° TCH 50'.

**RWY 03R-21L:** H9240X150 (ASPH-CONC) S-162, D-200, 2D-400

PCN 59 F/B/W/T HIRL 0.4% down SW

**RWY 03R:** REIL. PAPI(P4L)—GA 3.0° TCH 50'. Antenna. Rgt tfc.

**RWY 21L:** REIL. PAPI(P4L)—GA 3.0° TCH 51'. Road.

**RWY 08-26:** H6146X150 (ASPH) S-63, D-137, 2D-206

PCN 33 F/B/W/T HIRL 0.3% up E

**RWY 08:** Road. Rgt tfc.

**RWY 26:** Road.

**RWY 17-35:** H5710X150 (ASPH-CONC) S-72, D-171, 2D-255

PCN 33 F/B/W/T HIRL

**RWY 17:** VASI(V4L)—GA 3.0° TCH 40'. Tree. Rgt tfc.

**RWY 35:** REIL. Brush.

**RUNWAY DECLARED DISTANCE INFORMATION**

**RWY 03L:**TORA-13300 TODA-13300 ASDA-13300 LDA-13300

**RWY 03R:**TORA-9240 TODA-9240 ASDA-9240 LDA-9240

**RWY 08:** TORA-6146 TODA-6146 ASDA-6146 LDA-6146

**RWY 17:** TORA-5710 TODA-5710 ASDA-5710 LDA-5710

**RWY 21L:**TORA-9240 TODA-9240 ASDA-9240 LDA-9240

**RWY 21R:**TORA-13300 TODA-13300 ASDA-13300 LDA-13300

**RWY 26:** TORA-6146 TODA-6146 ASDA-6146 LDA-6146

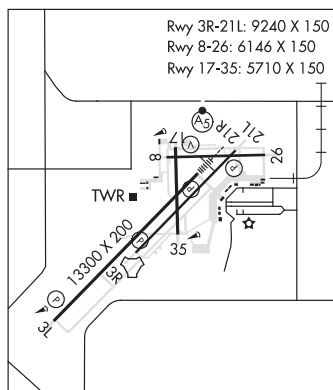
**RWY 35:** TORA-5710 TODA-5710 ASDA-5710 LDA-5710

**ARRESTING GEAR/SYSTEM**

**RWY 03L** HOOK E28(B) (3495 FT)

**RWY 03R** HOOK E28(B) (2725 FT)

**SERVICE:** S2 FUEL 100, JET A, A+ OX 1, 2, 3, 4



HOOK E28(B) (1699 FT) **RWY 21R**  
HOOK E28(B) (1675 FT) **RWY 21L**

CONTINUED ON NEXT PAGE

## CONTINUED FROM PRECEDING PAGE

**AIRPORT REMARKS:** Attended continuously. Mil opr hr 1430-0600Z dly; clsd hol. Mil avn ops not authorized 1430-1500Z dly. VAL/Trans svc abvl Mon-Fri 1500-0600Z, clsd Sat-Sun, Hol. Mil ramp clsd hol. Fuel: 100: on call H24. CAUTION: Avoid ovft Mexican border 7 NM W, jet trng ops invof. High volume LCL area ops on UHF; VHF ops exer ctn & strict compliance to ATC instr. Avoid ovft of MCAS Yuma infrastructure E of main apron. CAUTION: Joint use civil/mil arpt; gen avn and acr opr VFR enter ATA at 1200 ft when asgn Rwy 08-26 or 17-35. CAUTION: Tfc pat Rwy 03L/R and 21L/R overlap tfc pat Rwy 08-26 and 17-35. TPA Rwys 08-26 and 17-35 1200(984). TPA for civil turbo-jet acct asgn Rwy 03L/R or 21L/R 1700(1487) TPA hel 700(487). TPA Rwys 03L/R right traffic 1700(1487), Rwy 21L/R left traffic 1700(1487). Initial alt for overhead 4000(3784) 6 NM. Initial alt for straight-in 3000(2784) 6 NM. Copter-700 ft for any rwy. Gen avn and acr VFR dep fly rwy hdg mntn 1200 ft until outside ATA unless otrw apvd by twr. Mil jet ops fm 4000-3000 ft MSL descending to 1700 ft MSL wi 6 NM SW straight-in Rwy 03L and 03R and wi 6 NM NE straight-in Rwy 21R and 21L. Ambulance ops btn 0500-1300Z needing gnd access—Civil Arpt Auth C928-941-2396 or 376-5868. Twy A2 PCN 33/F/B/W/T, Twy K PCN 30/B/W/T, Twy L PCN 33/F/B/W/T, Twy Z PCN 33/F/B/W/T. Rotary wing acft recovery na to VTOL pad-4. 976 ft stwy Rwy 03R; 1000 ft stwy Rwy 21L; 1000 ft stwy Rwy 03L; 1000 ft stwy Rwy 21R; 1000 ft stwy Rwy 08; 251 ft stwy Rwy 26; 800 ft stwy Rwy 17; 262 ft stwy Rwy 35. ARFF NA aft ops hr exc sked Part 121 Acr. F/W, R/W and F35 rapid rfi hot pit avbl durg ATCT hr with 24 hr PPR-928-247-9571 or 131.225; 2 acft simul ops avbl; ADZ ATC and procd to S Ramp off Twy Z3. Flight Notification Service (ADCUS) available. U.S. CUSTOMS port of entry-928-344-9572 or 928-314-1295. Civil arpt ops-928-726-5882 extn 2161 or 928-941-2396.

**MILITARY REMARKS:** Opr 1430-0600Z dly, clsd hol, OT by NOTAM. Military ramp clsd hol. See FLIP AP/1, Supplementary Arpt Information. Mil arpt ops-928-269-2077. **RSTD** Flt clnc manned durg mil ops hr—D269-2326/2323/2077, C928-269-2326/2323/2077. Tsnt 24 hr PPR—D269-2445/2760, C928-269-2445/2760. AV8B vstol trng to Rwy 03-21 may have priority Mon-Fri over mil prac apch. 24 hr PPR for all tsnt fr VAL C928-269-2445, D269-2445. 24 hr PPR all tsnt utilizing mil ramp; D951-2445/2760, C928-269-2445/2760. Mil acft req to Rwy 03-21 may have priority Mon-Sat over practice apchs. Civilian arpt ops C928-726-5882 extension 2156. FOD Rstrn: Hvy/wide body arr/dep Rwy 03L-21R only; MCAS Yuma S Main Prkg Aprn/Val back tax Rwy 03L-21R then Twy D; Yuma Intl/FBO def contrr cmplx prkg aprn back taxi Rwy 03L-21R then Twy H1 or F1. Otr rwy or twy NA. Hvy/wide body eng runups on Rwy NA exc USAF 1/2. **MISC** DSN 269-2445/2760, C928-269-2445/2760. AV8B vertical/short tkf and ldg to Rwy 03-21 may have priority Mon-Fri over mil multiple practice apch. Ops hr applies to all mil inclg Yuma Intl and FBO; aft hr two week PPR in writing-928-269-3327/D269-3327.

**AIRPORT MANAGER:** 928-269-3327

**WEATHER DATA SOURCES:** ASOS NWS PHX serves Yuma. ASOS installed at auxiliary landing field by USMC. Yuma in support of training for aviation operations aboard MCAS Yuma. ASOS to provide local use data for USMC training purposes.

**COMMUNICATIONS:** CTAF 119.3 ATIS 118.8 273.5 (24 hrs) UNICOM 122.95

YUMA RCO 122.2 (PRESCOTT RADIO)

④ YUMA APP CON 124.7 371.975

TOWER 119.3 377.075 (1430-0600Z dly, cld hol. Mil avn ops not authorized 1430-1500Z dly due to afd maint.)

GND CON 121.9 314.0

④ YUMA DEP CON 125.5 282.325

CLNC DEL 336.4

COMD POST 337.9 PMSV METRO 120.7 120.725 349.75 (Avbl Mon-Fri 1400-2330Z)

VFR ADVSY SVC 124.7 371.975

**CLEARANCE DELIVERY PHONE:** For CD etc Yuma CERAP at 982-269-9569.

**AIRSPACE:** CLASS D svc 1430-0600Z, clsd hol; other times CLASS E.

**RADIO AIDS TO NAVIGATION:** NOTAM FILE NYL.

(L) TACAN Chan 84 NYL (113.7) N32°38.81' W114°36.81' at fld. 193/11E.

BARD (VH) (H) VORTAC 116.8 BZA Chan 115 N32°46.09' W114°36.18' 167° 6.7 NM to fld. 130/14E. NOTAM FILE SAN.

VOR unusable:

016°-030° byd 40 NM blo 9,000'

016°-030° byd 63 NM

031°-054° byd 40 NM

063°-116° byd 40 NM

265°-015° byd 40 NM

280°-300° byd 27 NM blo 3,600'

TACAN AZIMUTH unusable:

280°-300° byd 27 NM blo 3,600'

DME unusable:

280°-300° byd 27 NM blo 3,600'

ILS 108.3 I-YUM Rwy 21R. Class IE.

ASR/PAR

**COMM/NAV/WEATHER REMARKS:** Mil use: ILS Radar; see Terminal FLIP for Radar Minima.