

## CALIPATRIA

**CLIFF HATFIELD MEML** (CLR)(KCLR) 1 NW UTC-8(-7DT) N33°07.88' W115°31.28'

LOS ANGELES

-182 TPA—618(800) NOTAM FILE SAN

L-41

**RWY 08-26:** H3423X50 (ASPH) S-12

IAP

**RWY 08:** Thld dspcd 120'. Road.

**RWY 26:** Thld dspcd 229'. Road. Rgt tfc.

**AIRPORT REMARKS:** Unattended. Lgtd flagpole 800' SE of arprt, pole on S side of Rwy 08-26 at E end. Ultralight activity on and invof arprt. Parallel taxiway clsd indefinitely.

**AIRPORT MANAGER:** 760-348-4144

**COMMUNICATIONS:** CTAF 122.9

Ⓡ **YUMA APP/DEP CON** 128.55

**CLEARANCE DELIVERY PHONE:** For CD ctc Yuma CERAP at 928-269-9569.

**RADIO AIDS TO NAVIGATION:** NOTAM FILE IPL.

**IMPERIAL (VH) (H) VORTAC** 115.9 IPL Chan 106 N32°44.93' W115°30.51' 344° 22.9 NM to fld. -18/14E.

VOR unusable:

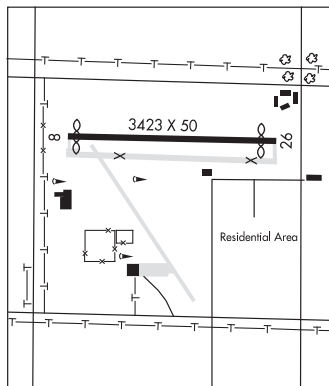
001°-052° byd 40 NM

240°-252° byd 40 NM

253°-267° byd 40 NM blo 8,400'

253°-267° byd 54 NM

274°-284° byd 40 NM



**CAMARILLO** (CMA)(KCMA) 3 W UTC-8(-7DT) N34°12.83' W119°05.66'

LOS ANGELES

77 B TPA—See Remarks NOTAM FILE CMA

COPTER

**RWY 08-26:** H6013X150 (ASPH-CONC-RFSC) S-50, D-80, 2S-102, 2D-125 MIRL

H-4H, L-3E, 4G, 7B

**RWY 08:** REIL. PAPI(P4L)—GA 3.0° TCH 48'. Rgt tfc.

IAP, AD

**RWY 26:** REIL. PAPI(P4L)—GA 3.0° TCH 48'.

**SERVICE:** S4 **FUEL** 100LL, JET A **OX 2** **LGT** When twr clsd **ACTIVATE** MIRL Rwy 08-26, REIL Rwy 08 and Rwy 26 and PAPI Rwy 08 and Rwy 26—CTAF.

**NOISE:** Noise sensitive all quadrants practice noise abatement/fly quiet/procedures.

**AIRPORT REMARKS:** Attended 1500-0700Z†. Fuel avbl 24 hrs self serve. Parachute Jumping. Wildlife on and invof arprt. TPA—877(800) single engine, 1077(1000) multiengine and jets. Be alert to high performance military acct ops invof arprt. Mountain 1173' MSL, beginning 5 miles from east end Rwy 26. Mountain 1814' MSL 5 miles to east-southeast of AER 26. No formation tkfs or lgds. No takeoffs 0800-1300Z† (without prior permission). Upon arrival ctc FBO or arprt ops 805-947-6803 for assistance. Helicopter training pads to the north of Twy B and Rwy 08-26. NSTD object free area east end of Twy F, impaired wing clnc, for acct with wingspan of 56' to 80'. Landing fee for acct over 12,500 lbs. Ultralight activity southwest quadrant of arprt. No lgds, taxiing or tkfs on chevroned area east of Rwy 26 thld.

**AIRPORT MANAGER:** 805-388-4372

**WEATHER DATA SOURCES:** ASOS 126.025 (805) 384-9294.

**COMMUNICATIONS:** CTAF 128.2 ATIS 126.025 805-484-3351 UNICOM 122.95

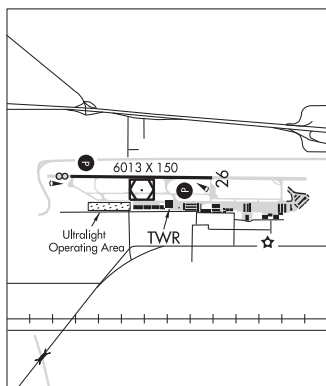
Ⓡ **POINT MUGU APP/DEP CON** 124.7 (1500-0700Z†)

Ⓡ **L.A. CENTER APP/DEP CON** 135.5 (0700-1500Z†)

**TOWER** 128.2 (1500-0500Z†) **GND CON** 121.8 **CLNC DEL** 121.8

**POINT MUGU CLNC DEL** 120.75 (0500-0700Z†)

**AIRSPACE:** CLASS D svc 1500-0500Z†; other times CLASS G.



CONTINUED ON NEXT PAGE

CONTINUED FROM PRECEDING PAGE

**RADIO AIDS TO NAVIGATION:** NOTAM FILE CMA.

(VL) (L) **VOR/DME** 115.8 CMA Chan 105 N34°12.75' W119°05.66' at fld. 63/15E.

VOR unusable:

046°-245° byd 20 NM blo 14,000'

046°-300° byd 40 NM

276°-300° byd 20 NM blo 14,000'

301°-045°

DME unusable:

046°-245° byd 20 NM blo 14,000'

276°-300° byd 20 NM blo 14,000'

301°-045°

**COMM/NAV/WEATHER REMARKS:** For after hrs IFR Clnc Del ctc Los Angeles ARTCC 661-575-2052.

**CAMERON PARK** (061) 0 N UTC-8(-7DT) N38°41.04' W120°59.25'

**SAN FRANCISCO**

1287 TPA-2301(1014) NOTAM FILE RIU

L-26, 3A

**RWY 13-31:** H4051X50 (ASPH) MIRL 0.5% up NW

**RWY 13:** Thld dsplcd 193'. Tree.

**RWY 31:** PVASI(PSIL)-GA 6.0° TCH 18'. Thld dsplcd 1509'. Tree.

**SERVICE:** S4 **FUEL** 100LL **LGT** ACTIVATE MIRL Rwy 13-31-CTAF.

**NOISE:** Noise abatement procedures call arpt manager 530-676-8316.

**AIRPORT REMARKS:** Attended Mon-Fri 1600-0100Z. Fuel avbl continuously

by credit card. Migratory geese invof arpt. Do not confuse parl

residential streets on both sides of arpt with the rwy. Rwy 13-31

restricted to use by acft with less than a maximum certificated gross

weight of 12,500 pounds and wingspan less than 50'. Helicopter

parking not authorized. 1597' hill unlgtd 0.5 NM SE of arpt. Rwy

13-31 west side 60' gates in perimeter fencing to provide access to

residential area for residents and invited guests.

**AIRPORT MANAGER:** 530-676-8316

**WEATHER DATA SOURCES:** AWOS-1 120.0 (530) 677-5392.

**COMMUNICATIONS:** CTAF/UNICOM 123.05

**CLEARANCE DELIVERY PHONE:** For CD ctc NorCal Apch at 916-361-6874.

**RADIO AIDS TO NAVIGATION:** NOTAM FILE RIU.

**HANGTOWN (L) (L) VOR/DME** 115.5 HNW Chan 102 N38°43.48'

W120°44.96' 241° 11.5 NM to fld. 2604/17E.

VOR unusable:

200°-260° byd 15 NM blo 9,500'

320°-350° byd 10 NM blo 6,000'

320°-350° byd 25 NM blo 14,500'

