

COVELO

ROUND VALLEY (009) 1 SW UTC-8(-7DT) N39°47.43' W123°15.98'

SAN FRANCISCO
L-2H

1434 B TPA-2234(800) NOTAM FILE OAK

RWY 10-28: H3670X60 (ASPH) S-30 MIRL

RWY 10: Thld dsplcd 210'. Hill.

RWY 28: Thld dsplcd 270'. Trees. Rgt tfc.

SERVICE: FUEL 100LL LGT Arpt bcn dusk-dawn. For MIRL Rwy 10-28 key 122.8 5 times.

AIRPORT REMARKS: Unattended. Arpt in valley; high mts and trrn and ridge srnd arpt. Mt flying experience strongly rcmd.

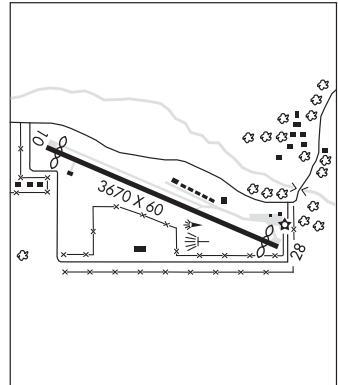
AIRPORT MANAGER: 707-463-4363

COMMUNICATIONS: CTAF/UNICOM 122.8

CLEARANCE DELIVERY PHONE: For CD ctc Oakland ARTCC at 510-745-3380.

RADIO AIDS TO NAVIGATION: NOTAM FILE UKI.

MENDOCINO (VH) (H) VORTACW 112.3 ENI Chan 70 N39°03.19' W123°16.46' 344° 44.2 NM to fld. 2985/16E.



CRESCENT CITY

JACK MC NAMARA FLD (CEC)(KCEC) 3 NW UTC-8(-7DT) N41°46.81' W124°14.19'

KLAMATH FALLS
H-3B, L-2I
IAF

61 B Class III, ARFF Index A NOTAM FILE CEC MON Airport

RWY 12-30: H5002X150 (ASPH) S-30, D-43 PCN 9 F/D/Y/U HIRL

RWY 12: MALSR.

RWY 30: REIL. VASI(V4L)—GA 3.5° TCH 60'. Trees.

RWY 18-36: H5000X150 (ASPH) S-30, D-43 PCN 9 F/D/Y/U MIRL

RWY 18: REIL. Thld dsplcd 148'. Ground.

RWY 36: REIL. VASI(V4L)—GA 3.0° TCH 48'. Road.

RUNWAY DECLARED DISTANCE INFORMATION

RWY 12: TORA-5002 TODA-5002 ASDA-5002 LDA-5002

RWY 18: TORA-5000 TODA-5000 ASDA-5000 LDA-4850

RWY 30: TORA-5002 TODA-5002 ASDA-5002 LDA-5002

RWY 36: TORA-4850 TODA-4850 ASDA-4850 LDA-4850

SERVICE: S2 FUEL 100LL, JET A LGT ACTIVATE MALSR Rwy 12, REIL Rwy 18, Rwy 36, and Rwy 30, HIRL Rwy 12-30, and MIRL Rwy 18-36—CTAF.

AIRPORT REMARKS: Attended 1600-0200Z. Other hrs fixed-base operator rqr call out fee. Birds and deer on and in vicinity of arpt. A 150' lgtd twr 3300' W CEC VOR. Ridge lines of shifting sand dunes 30-50' AGL and 1000' off apch end Rwy 18. PPR for unscheduled air carrier ops with more than 30 passenger seats call arpt manager 707-464-7288 or 707-465-3804. Transient parking ramp estimated weight limit 20,000 lbs, FBO ramp estimated weight limit 60,000 lbs.

AIRPORT MANAGER: 707-464-7288

WEATHER DATA SOURCES: ASOS 119.925 (707) 465-5458.

COMMUNICATIONS: CTAF/UNICOM 122.8

CRESCENT CITY RCO 122.3 (OAKLAND RADIO)

Ⓡ **SEATTLE CENTER APP/DEP CON** 124.85

CLEARANCE DELIVERY PHONE: For CD if una to ctc on FSS freq, ctc Seattle ARTCC at 253-351-3694.

AIRSPACE: CLASS E.

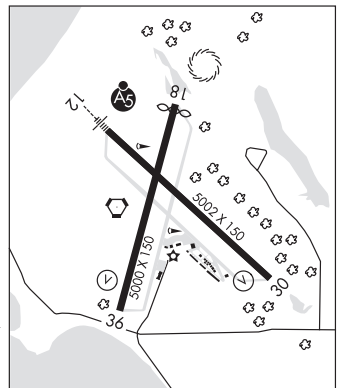
RADIO AIDS TO NAVIGATION: NOTAM FILE CEC.

CRESCENT CITY (L) (L) VORTACW 109.0 CEC Chan 27 N41°46.77' W124°14.45' at fld. 55/14E.

TACAN AZIMUTH & DME unusable:

195°-235° byd 20 NM

ILS 108.7 I-CEC Rwy 12. Class IA. LOC unusable within 0.3 NM fm thld. Unmonitored.



CRESCENT CITY N41°46.77' W124°14.45' NOTAM FILE CEC.

KLAMATH FALLS
H-3A, L-2I

(L) (L) **VORTACW** 109.0 CEC Chan 27 at Jack Mc Namara Fld. 55/14E.

TACAN AZIMUTH & DME unusable:

195°-235° byd 20 NM

RCO 122.3 (OAKLAND RADIO)