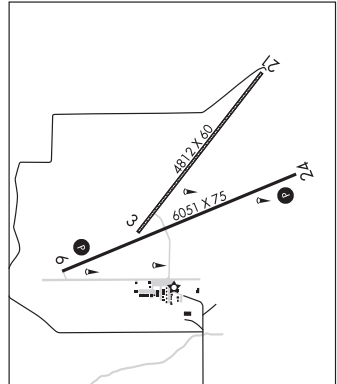


DEL NORTE

ASTRONAUT KENT ROMINGER (RCV)(KRCV) 3 N UTC-7(-6DT) N37°42.83' W106°21.12'

DENVER
H-3E, L-9E
IAP

7955 B NOTAM FILE DEN
RWY 06-24: H6051X75 (ASPH) MIRL 1.1% up SW
RWY 06: REIL. PAPI(P2L)—GA 4.0° TCH 43'. Rgt tfc.
RWY 24: REIL. PAPI(P2L)—GA 3.0° TCH 40'.
RWY 03-21: 4812X60 (TURF)
RWY 21: Road.
SERVICE: FUEL 100LL, JET A+ LGT Actvt REIL Rwy 06 and 24, PAPI Rwy 06 and 24, MIRL Rwy 06-24—CTAF. REIL Rwy 06 and 24 only opr at ngt. Rwy 06 VGS1 unusbl byd 5° right of crs.
AIRPORT REMARKS: Unattended. Wildlife on and invof arpt. Fuel avblty: 100LL 24 hrs with cc; Jet A+ by apntmt, ctc AMGR 719-221-6677. Unl vehicle aces on arpt. Mtus trrm all quads. Rwy 03-21 has nmrs holes first 500 ft of Rwy 03; rough sfc thrut. Rwy 21 +8 ft sign 20 ft from thr 10 ft R of cntrln.
AIRPORT MANAGER: 719-221-6677
WEATHER DATA SOURCES: AWOS-3PT 118.275 (719) 657-9017.
COMMUNICATIONS: CTAF 122.9



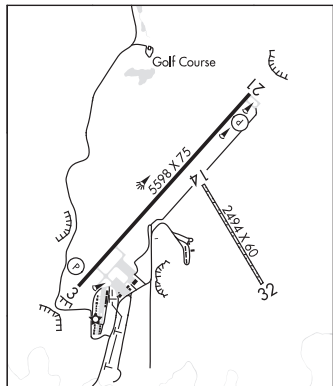
Ⓡ **DENVER CENTER APP/DEP CON** 128.375
CLEARANCE DELIVERY PHONE: For CD ctc Denver ARTCC at 303-651-4257.
RADIO AIDS TO NAVIGATION: NOTAM FILE ALS.
ALAMOSA (VH) (H) VORTACW 113.9 ALS Chan 86 N37°20.95' W105°48.93' 298° 33.7 NM to fld. 7535/13E.
 VOR unusable:
 025°-045° byd 25 NM blo 15,900'
 072°-149° byd 40 NM
 150°-180° byd 35 NM blo 11,600'
 181°-213° byd 40 NM
 214°-224° byd 40 NM blo 13,000'
 214°-224° byd 56 NM
 225°-333° byd 40 NM
 334°-344° byd 40 NM blo 18,000'
 345°-348° byd 40 NM
 352°-024° byd 40 NM
 TAC AZM unusable:
 025°-045° byd 25 NM blo 15,900'
 150°-180° byd 35 NM blo 11,600'
 DME unusable:
 025°-045° byd 25 NM blo 15,900'
 150°-180° byd 35 NM blo 11,600'

DELTA

BLAKE FLD (AJZ)(KAJZ) 3 N UTC-7(-6DT) N38°47.14' W108°03.72'

DENVER
H-3E, L-9E
IAP

5193 B TPA—6200(1007) NOTAM FILE DEN
RWY 03-21: H5598X75 (ASPH) S-30, D-30 MIRL 1.5% up NE
RWY 03: REIL. PAPI(P2L)—GA 3.0° TCH 40'. Rgt tfc.
RWY 21: REIL. PAPI(P2L)—GA 3.0° TCH 37'.
RWY 14-32: 2494X60 (DIRT) 1.4 % up NW
SERVICE: S3 FUEL 100LL, JET A OX3 LGT ACTVT REIL Rwy 03 and Rwy 21; MIRL Rwy 03-21—CTAF. PAPI Rwy 03 and 21 on consly.
AIRPORT REMARKS: Attended Mon-Fri 1500-0000Z. 24 hr self serve fuel avbl. After hrs emerg fone, Sheriff Dept 970-874-2000/aft hrs svc 970-209-0883. Plines 2640' NW Rwy 03-21, +52' AGL. Rwy 21 has turn around taxi has blue/white reflectors. Rwy 03 has +4' fence 580' from thld OB. Antelope on and invof arpt. Rwy 03-21 has 4' bushes 15-20' from rwy edge on both sides in various places. Rwy 03-21 slopes up to the NE.
AIRPORT MANAGER: 970-874-5181
WEATHER DATA SOURCES: AWOS-3 134.0 (970) 874-3251.
COMMUNICATIONS: CTAF/UNICOM 122.8
DENVER CENTER APP/DEP CON 127.1
CLEARANCE DELIVERY PHONE: For CD ctc Denver ARTCC at 303-651-4257.



CONTINUED ON NEXT PAGE

CONTINUED FROM PRECEDING PAGE

RADIO AIDS TO NAVIGATION: NOTAM FILE DEN.

GRAND JUNCTION (VH) (DH) VORW/DME 112.4 JNC Chan 71 N39°03.57' W108°47.55' 100° 37.9 NM to fld.
7100/15E.

DME unusable:

125°-135° byd 33 NM blo 12,000'
136°-176° byd 33 NM blo 14,000'

VOR unusable:

070°-076° byd 40 NM
077°-087° byd 40 NM blo 15,000'
077°-087° byd 66 NM
088°-092° byd 40 NM
093°-103° byd 40 NM blo 13,000'
093°-103° byd 51 NM
104°-124° byd 40 NM
125°-135° byd 33 NM blo 12,000'
125°-135° byd 47 NM
136°-145° byd 40 NM
146°-156° byd 40 NM blo 15,000'
146°-156° byd 57 NM
157°-205° byd 40 NM

WESTWINDS (D17) 4 W UTC-7(-6DT) N38°45.51' W108°08.91'

DENVER

5000 NOTAM FILE DEN

L-9E

RWY 04-22: H4100X40 (ASPH)

RWY 22: Trees.

RWY 13-31: 2000X70 (GRVL-DIRT)

RWY 13: Hill.

RWY 31: Road.

AIRPORT REMARKS: Attended 1500-0000Z. Rwy 04-22 CLOSED to acft 8,500 lbs or more. Wildlife on and in/ov arpt. +100' to 300' mountains lctd north, west and east of arpt at varying distances. Rwy 22 has 180' mountain 1500' from rwy end, apch slope 7:1. Rwy 13-31 soft when wet. Rwy 31 has +10' trees 150' from thld 0B. +40' tree 60' from thld 50' rgt of cntrln. Rwy 04 has +120' terrain 2700' from thld 380' left of cntrln.

AIRPORT MANAGER: 303-829-1696

COMMUNICATIONS: CTAF/UNICOM 122.8

CLEARANCE DELIVERY PHONE: For CD ctc Denver ARTCC at 303-651-4257.

RADIO AIDS TO NAVIGATION: NOTAM FILE MTJ.

MONTROSE (VH) (H) VORW/DME 117.1 MTJ Chan 118 N38°30.39' W107°53.96' 310° 19.1 NM to fld.
5713/12E. vDME unmonitored.

DME unusable:

011°-090° byd 26 NM blo 15,000'
190°-250° byd 25 NM blo 15,000'

VOR unusable:

001°-167° byd 40 NM
060°-090° byd 26 NM blo 16,000'
167°-178° byd 50 NM
168°-178° byd 40 NM blo 16,300'
179°-251° byd 40 NM
190°-250° byd 25 NM blo 15,000'
252°-262° byd 40 NM blo 13,000'
252°-262° byd 51 NM blo 15,500'
252°-262° byd 72 NM
263°-295° byd 40 NM
313°-360° byd 40 NM