

SANTA FE RGNL (SAF)(KSAF) P (ARNG) 9 SW UTC-7(-6DT) N35°37.03' W106°05.37'

ALBUQUERQUE

6349 B TPA—See Remarks ARFF Index—See Remarks NOTAM FILE SAF

H-4L, 6F, L-8I

RWY 02-20: H8366X150 (ASPH-PFC) S-116, D-164, 2S-83, 2D-269

IAP, AD

PCN 46 F/C/X/T MIRL

RWY 02: VASI(V4L)—GA 3.0° TCH 69'. Hill. 0.9% up.**RWY 20:** REIL. VASI(V4L)—GA 3.0° TCH 54'. 0.9% down.**RWY 15-33:** H6316X100 (ASPH-GRVD) S-28, D-43.5

PCN 10 F/C/Y/T MIRL 0.7% up NW

RWY 15: REIL.**RWY 33:** REIL. VASI(V4R)—GA 3.0° TCH 86'.**RWY 10-28:** H6301X75 (ASPH-PFC) S-12.5 PCN 4 F/C/Y/T

0.3% up E

RWY 10: REIL.**RWY 28:** Road.**RUNWAY DECLARED DISTANCE INFORMATION****RWY 15:** TORA-6316 TODA-6316 ASDA-5221 LDA-5221**SERVICE:** S4 FUEL 100LL, JET A, A+ OX 1, 2, 3, 4 LGT When ATCT clsd actvt MIRL Rwy 02-20, 15-33—CTAF; MIRL Rwy 02-20 preset low intst; incr intst—CTAF. Rwy 02-20 Intens rwy lgts: Midfield lgt colored.**MILITARY—** FUEL A+ (avbl 1300-0500Z†, C505-471-2525; OT call 1 hr PN rqr and \$50/hr fee.) (NC-100LL, A1, A1+) FLUID LHOXRB, SP**NOISE:** Noise abatement proc—AMGR.**AIRPORT REMARKS:** Attended 1300-0500Z†. Aft hr svc—505-577-7256 or 505-471-2255. Class I, ARFF Index A. 24 hr PPR for acr ops with more than 30 pax seats—505-955-2900. ARFF Index B avbl on req. Rotary wing TPA—7000 (652). RNG on fld.**AIRPORT MANAGER:** 505-955-2900**WEATHER DATA SOURCES:** ASOS (505) 474-3117**COMMUNICATIONS:** CTAF 119.5 ATIS 128.55 UNICOM 122.95

RCO 122.2 (ALBUQUERQUE RADIO)

Ⓡ ALBUQUERQUE CENTER APP/DEP CON 132.8

TOWER 119.5 (1400-0400Z†) GND CON 121.7

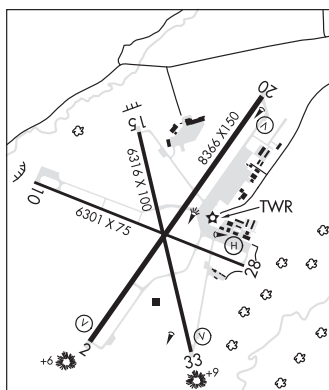
CLEARANCE DELIVERY PHONE: For CD if una to ctc on FSS freq, ctc Albuquerque ARTCC at 505-856-4561.**AIRSPACE:** CLASS D svc 1400-0400Z†; other times CLASS G.**RADIO AIDS TO NAVIGATION:** NOTAM FILE SAF.

(L) (L) VORTACW 110.6 SAF Chan 43 N35°32.43' W106°03.90' 332° 4.7 NM to fld. 6268/13E.

VORTAC unusable:

015°-030° byd 30 NM blo 14,600'

ILS/DME 111.7 I-SGB Chan 54 Rwy 02. Class IE. Unmonitored when ATCT closed.

**SANTA ROSA ROUTE 66** (SXU)(KSXU) 3 E UTC-7(-6DT) N34°56.14' W104°38.55'

ALBUQUERQUE

4791 B NOTAM FILE ABQ

H-6F, L-15A

RWY 01-19: H5013X75 (ASPH) S-12.5 PCN 5 F/D/Y/T MIRL**RWY 19:** PAPI(P2L)—GA 2.45° TCH 41'.**RWY 08-26:** H4294X60 (ASPH) S-11.5 PCN 5 F/C/Y/T MIRL 0.4% up E**RWY 26:** PAPI(P2L)—GA 3.36° TCH 27'.**SERVICE:** FUEL 100LL, JET A1+ LGT ACTVT MIRL Rwy 01-19 and Rwy 08-26 preset med intst dusk-0500Z†; incr intst CTAF. Aft 0500Z† ACTVT—CTAF.**AIRPORT REMARKS:** Unattended. 100LL avbl H24 with credit card. Wildlife on and invof arpt. Rwy 01-19 +5 ft berm W of centerline near Rwy 19 touchdown bars. Gate access code—9942.**AIRPORT MANAGER:** 575-799-2296**WEATHER DATA SOURCES:** AWOS-3 118.1 (575) 472-9943.**COMMUNICATIONS:** CTAF/UNICOM 122.8**CLEARANCE DELIVERY PHONE:** For CD ctc Albuquerque ARTCC at 505-856-4861.**RADIO AIDS TO NAVIGATION:** NOTAM FILE ABQ.

ANTON CHICO (VH) (H) VORTAC 117.8 ACH Chan 125 N35°06.70' W105°02.40' 106° 22.2 NM to fld.

5450/12E.