

SILVER CITY

GRANT CO (SVC)(KSVC) 10 SE UTC-7(-6DT) N32°38.19' W108°09.38'

ALBUQUERQUE

5446 B Class III, ARFF Index A NOTAM FILE SVC

H-4K, L-5D

RWY 08-26: H6803X100 (ASPH-GRVD) S-75, D-100, 2S-127

IAP, AD

PCR 617 F/A/X/T. MIRL

RWY 08: REIL. PAPI(P4L)—GA 3.0° TCH 44'.

RWY 26: MALS. PAPI(P4L)—GA 3.0° TCH 45'.

RWY 17-35: 5473X75 (DIRT) 1.1% up N

RWY 17: Thld dsplcd 109'. Fence.

RWY 35: P-line.

RWY 12-30: 4675X75 (DIRT) 1.1% up NW

RWY 12: Fence.

RWY 30: Tower.

RWY 03-21: 4537X80 (DIRT) 0.6% up NE

RWY 03: Pole.

RWY 21: Fence.

SERVICE: FUEL 100LL, JET A1 LGT ACTVT MALS Rwy 26; REIL Rwy 08; MIRL Rwy 08-26—CTAF. Rwy 08 REIL 39 inches tall 9 ft fm the edge of Twy A9.

AIRPORT REMARKS: Attended 1300-0000Z†. Rwy 03-21, 12-30 and 17-35 dalgt VFR cond only. Acft may be parked near Rwy 17. Cattle and wildlife on and invof arpt. Rwy 17 dthr mkd by tires. 5621 ft crane NE of arpt 8800 ft fm Rwy 26 on cntrln. Twy A2, A3 and A4 unusbl cockpit to main gear len ovr 40 ft.

AIRPORT MANAGER: 575-313-9784

WEATHER DATA SOURCES: AWOS-3 126.725 (575) 388-5947. Ceiling unreliable.

COMMUNICATIONS: CTAF/UNICOM 122.8

RCO 122.1R 115.75T (ALBUQUERQUE RADIO)

SILVER CITY RCO 122.3 (ALBUQUERQUE RADIO)

® ALBUQUERQUE CENTER APP/DEP CON 134.45

CLEARANCE DELIVERY PHONE: For CD if una to ctc on FSS freq, ctc Albuquerque ARTCC at 505-856-4561.

RADIO AIDS TO NAVIGATION: NOTAM FILE SVC.

SILVER CITY (L) (L) VOR/DME 115.75 SVC Chan 104(Y) N32°38.26' W108°09.66' at fld. 5423/13E.

VOR unusable:

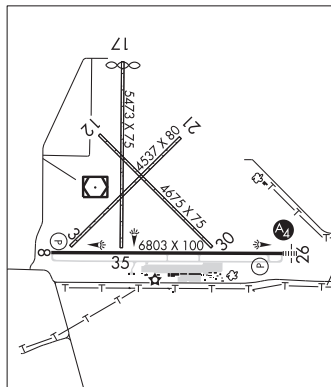
242°-252° byd 38 NM blo 12,100'

DME unusable:

242°-260° byd 35 NM blo 11,100'

305°-355° byd 29 NM blo 12,500'

LOC/DME 111.7 I-SVC Chan 54 Rwy 26. LOC unmonitored.



WHISKEY CREEK (94E) 4 E UTC-7(-6DT) N32°45.72' W108°12.50'

ALBUQUERQUE

6126 B NOTAM FILE ABQ

H-4K, L-5D

RWY 17-35: H5400X50 (ASPH) S-10 LIRL(NSTD)

RWY 35: Brush.

SERVICE: S4 LGT LIRL Rwy 17-35—123.0. Rwy 17-35 NSTD LIRL, non-frangible posts with reflectors. Lgtd windsock on top of hangar.

AIRPORT REMARKS: Attended Mon-Fri 1400-2300Z†. Cattle and wildlife on and invof arpt. Rwy 17 numbers and centerline stripes NSTD. Rwy 35 numbers and centerline stripes NSTD. Acft parked near rwy posble -2' ditch E side. Drop off 18' F rwy end. Rwy 17-35 acft over 10,000 lbs NA. +4' fence 75' left and right of centerline, 1300' from south end, +4' fence 75' east of centerline whole length of rwy.

AIRPORT MANAGER: (575) 590-2061

COMMUNICATIONS: CTAF/UNICOM 122.8

CLEARANCE DELIVERY PHONE: For CD ctc Albuquerque ARTCC at 505-856-4861.

RADIO AIDS TO NAVIGATION: NOTAM FILE SVC.

SILVER CITY (L) (L) VOR/DME 115.75 SVC Chan 104(Y) N32°38.26' W108°09.66' 329° 7.8 NM to fld.

5423/13E.

VOR unusable:

242°-252° byd 38 NM blo 12,100'

DME unusable:

242°-260° byd 35 NM blo 11,100'

305°-355° byd 29 NM blo 12,500'