

ESTRELLA SAILPORT (See MARICOPA on page 65)

FALCON FLD (See MESA on page 66)

FLAGSTAFF PULLIAM (FLG)(KFLG) 4 S UTC-7 N35°08.42' W111°40.15'

7015 B TPA—See Remarks Class I, ARFF Index B NOTAM FILE FLG

RWY 03-21: H8800X150 (ASPH-GRVD) S-30, D-95, 2S-120, 2D-140

PCN 37 F/D/W/T HIRL

RWY 03: PAPI(P4L)—GA 3.0° TCH 52'.

RWY 21: MALSR. PAPI(P4L)—GA 3.0° TCH 51'. Thld dspldc 1800'.

RUNWAY DECLARED DISTANCE INFORMATION

RWY 03: TORA-8800 TODA-8800 ASDA-8800 LDA-8800

RWY 21: TORA-8800 TODA-8800 ASDA-8800 LDA-7000

SERVICE: S4 **FUEL** 100LL, JET A **OX2** **LGT** When ATCT clsd ACTIVATE MALSR Rwy 21; HIRL Rwy 03-21—CTAF. PAPI Rwy 03-21 on consly.

NOISE: Noise abatement proc in eft; avoid flight over village 3 miles south.

AIRPORT REMARKS: Attended continuously. Fuel avbl H24. Rwy 21 calm wind rwy. Exp wind shear and turbulence when sfc winds exceed 10 Kt.

ILS unmonitored when twr clsd. Snow removal equip may be on rwy;

mnt 134.55 when ATCT clsd. Arpt may be CLOSED during snow

removal ops. TPA-8004(989) conventional acft, 7504(489)

helicopter, 8504(1489) high performance.

AIRPORT MANAGER: 928-213-2934

WEATHER DATA SOURCES: ASOS 125.8 (928) 779-2439.

COMMUNICATIONS: CTAF 134.55 ATIS 125.8 UNICOM 122.95

RCO 123.65R 113.85T (PRESCOTT RADIO)

COTTONWOOD RCO 122.3 (PRESCOTT RADIO)

® **PHOENIX APP/DEP CON** 126.375

TOWER 134.55 1300-0400Z 1 Apr-30 Sep, 1400-0200Z 1 Oct-31 Mar **GND CON** 121.9

CLEARANCE DELIVERY PHONE: For CD when ATCT clsd, etc Phoenix Apch at 602-306-2565.

AIRSPACE: CLASS D svc 1300-0400Z 1 Apr-30 Sep, 1400-0200Z 1 Oct-31 Mar; other times CLASS G.

RADIO AIDS TO NAVIGATION: NOTAM FILE FLG.

(VH) (DH) **VOR/DME** 113.85 FLG Chan 85(Y) N35°08.83' W111°40.45' at fld. 7026/14E.

VOR unusable:

030°-040° byd 40 NM

041°-051° byd 40 NM blo 18,000'

052°-061° byd 40 NM

062°-072° byd 40 NM blo 18,000'

073°-140° byd 40 NM

141°-151° byd 40 NM blo 18,000'

152°-159° byd 40 NM

160°-177° byd 40 NM blo 11,000'

160°-177° byd 48 NM blo 12,000'

160°-177° byd 63 NM

178°-231° byd 40 NM

232°-252° byd 40 NM blo 18,000'

253°-295° byd 40 NM

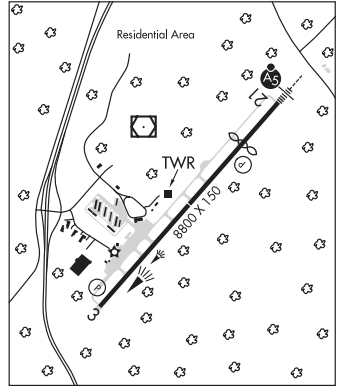
335°-030° byd 19 NM blo 24,000'

350°-026° byd 40 NM

DME unusable:

230°-255° byd 20 NM blo 15,000'

ILS 110.5 I-FLG Rwy 21. Glideslope unusable byd 5° right of course. LOC unusable inside of flg 0.8 DME; LOC unusable byd 26° left of course. Unmonitored when ATCT clsd.



PHOENIX

H-4I, L-8G

IAP, AD

FLYING J RANCH (See PIMA on page 77)

FORT HUACHUCA N31°35.13' W110°20.34' NOTAM FILE FHU.

(T) **TACAN** 111.6 ARH Chan 53 at Sierra Vista Muni-Libby AAF. 4660/12E. unmonitored when twr clsd.

PHOENIX

H-4K, L-5C

TACAN unusable:

105°-250° byd 10 NM

120°-300° byd 20 NM

military use: No NOTAM MP 1200-1500Z 1st Thursday of month