

**SPRINGERVILLE MUNI** (JTC)(KJTC) 1 WSW UTC-7 N34°07.77' W109°18.65'

PHOENIX

7055 B NOTAM FILE PRC

H-4K, L-5D

**RWY 03-21:** H8422X75 (ASPH) S-30 MIRL

**RWY 03:** PAPI(P2L)—GA 4.0° TCH 46'. 0.4% down.

**RWY 21:** PAPI(P2L)—GA 3.0° TCH 35'. Rgt tfc. 0.6% up.

**RWY 11-29:** H4603X60 (ASPH) S-19 MIRL

**RWY 11:** PAPI(P2L)—GA 3.0° TCH 35'.

**SERVICE:** FUEL 100LL, JET A+ LGT Rwy 03 PAPI does not provide obstacle clearance 2 NM byd thld. ACTVT PAPI Rwy 03 and Rwy 21; MIRL Rwy 03-21; PAPI Rwy 11; MIRL Rwy 11-29—CTAF. (NSTD-5 clicks on; 7 clicks off.

**AIRPORT REMARKS:** Attended 1500-2300Z. For fuel after hrs call 928-245-0151. Mil tfc near arpt. Wildlife on and invof arpt. Density indicators located at fuel pumps.

**AIRPORT MANAGER:** 928-333-5746

**WEATHER DATA SOURCES:** AWOS-3PT 119.65 (928) 333-5716.

**COMMUNICATIONS:** CTAF/UNICOM 122.8

Ⓡ **ALBUQUERQUE CENTER APP/DEP CON** 132.9

**CLEARANCE DELIVERY PHONE:** For CD ctc Albuquerque ARTCC at 505-856-4861.

**RADIO AIDS TO NAVIGATION:** NOTAM FILE SJN.

**ST JOHNS (VH) (H) VORTAC** 112.3 SJN Chan 70 N34°25.44'

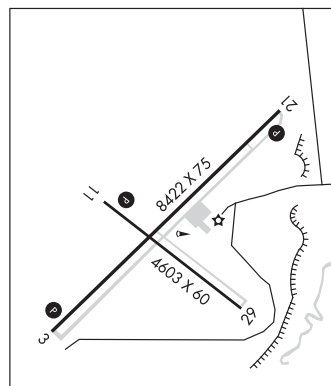
W109°08.61' 193° 19.5 NM to fld. 6840/12E.

VOR unusable:

097°-108° byd 40 NM

109°-119° byd 40 NM blo 18,000'

120°-222° byd 40 NM



**STANFIELD** N32°53.15' W111°54.52' NOTAM FILE PRC.

PHOENIX

(VH) (H) **VORTAC** 114.8 TFD Chan 95 048° 8.3 NM to Casa Grande Muni. 1316/12E.

H-4J, L-5B, A

VOR unusable:

034°-039° byd 40 NM

075°-088° byd 40 NM blo 9,000'

075°-088° byd 47 NM

110°-122° byd 40 NM

127°-134° byd 40 NM

160°-278° byd 40 NM

279°-289° byd 40 NM blo 18,000'

290°-315° byd 40 NM

**RCO** 122.1R 114.8T (PRESCOTT RADIO)

**STELLAR AIRPARK** (See CHANDLER on page 40)

**SUN VALLEY** (See BULLHEAD CITY on page 38)

**SUPERIOR MUNI** (E81) 2 SW UTC-7 N33°16.67' W111°07.62'

PHOENIX

2646 NOTAM FILE PRC

**RWY 04-22:** 3250X75 (GRVL)

**RWY 04:** Tree.

**AIRPORT REMARKS:** Unattended. Emerg-520-689-5254 police. Gate code 2646. Lndg uphill to NE rcmd. Rwy 04-22 E 2000 ft excellent, W 1000 ft fair. Rwy 04-22 12 ft brush and trees 75 ft fm cntrln both sides; mainly 1000 ft W. Rwy 04 4375 ft MSL mountain located 9000 ft W. Livestock on arpt. Rwy 22 NSTD markings, painted rubber tires. Terrain NE; mts and hills SSW-SW.

**AIRPORT MANAGER:** 520-689-5752

**COMMUNICATIONS:** CTAF/UNICOM 122.7

**CLEARANCE DELIVERY PHONE:** For CD ctc Albuquerque ARTCC at 505-856-4861.