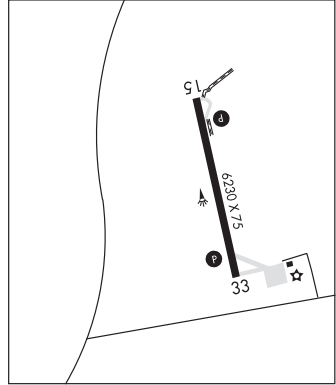


**TOMBSTONE MUNI** (P29) P 3 SE UTC-7 N31°40.28' W110°01.29'  
 4733 NOTAM FILE PRC  
**RWY 06-24:** H4430X60 (ASPH) 1.0% up SW  
**RWY 06:** Brush.  
**RWY 24:** Brush.  
**SERVICE:** S2 **FUEL** 100LL, JET A  
**AIRPORT REMARKS:** Unattended. Svc avblty—Amgr. Gate code 3214. 15 ft trees and bushes within primary surface. Rwy 06-24 2-6 ft brush both sides.  
**AIRPORT MANAGER:** 520-720-7125  
**COMMUNICATIONS:** CTAF 122.9  
**CLEARANCE DELIVERY PHONE:** For CD ctc Albuquerque ARTCC at 505-856-4861.

PHOENIX  
L-5C

**TUBA CITY** (T03) 5 W UTC-7 N36°05.56' W111°22.99'  
 4513 B NOTAM FILE PRC  
**RWY 15-33:** H6230X75 (ASPH) S-12.5 MIRL  
**RWY 15:** PAPI(P2L)—GA 3.0° TCH 40'.  
**RWY 33:** PAPI(P2L)—GA 3.0° TCH 40'.  
**SERVICE:** LGT ACTVT PAPI Rwy 15 and 33; MIRL Rwy 15-33—CTAF.  
**AIRPORT REMARKS:** Unattended. Livestock on arpt. Arpt aces—928-283-2501; gate code: 4513. Rwy 15-33 N 1500 ft sfc undulations up to 8 in.  
**AIRPORT MANAGER:** (505) 728-2804  
**COMMUNICATIONS:** CTAF 122.9  
**RCO 122.05R 113.5T (PRESCOTT RADIO)**  
**RADIO AIDS TO NAVIGATION:** NOTAM FILE PRC.  
**(VH) (H) VORTAC** 113.5 TBC Chan 82 N36°07.28' W111°16.18' 238° 5.8 NM to fld. 5045/15E.  
 VOR unusable:  
 089°-160° byd 40 NM  
 183°-202° byd 40 NM  
 207°-231° byd 40 NM  
 235°-245° byd 40 NM  
 275°-053° byd 40 NM

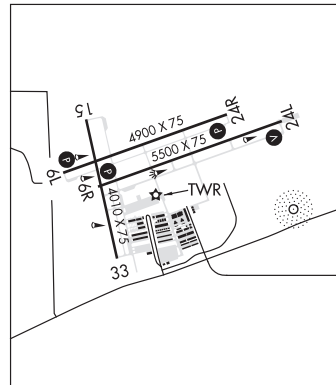
LAS VEGAS  
H-4J, L-8G



**TUCSON**

**RYAN FLD** (RYN)(KRYN) 10 SW UTC-7 N32°08.53' W111°10.47'  
 2419 B TPA—3219(800) NOTAM FILE PRC  
**RWY 06R-24L:** H5500X75 (ASPH) S-12.5, D-30 MIRL  
**RWY 06R:** REIL. PAPI(P4L)—GA 3.0° TCH 53'. Rgt tfc.  
**RWY 24L:** VASI(V4L)—GA 3.0° TCH 26'.  
**RWY 06L-24R:** H4900X75 (ASPH) S-12.5, D-30 MIRL  
**RWY 06L:** REIL. PAPI(P4L)—GA 3.0° TCH 42'.  
**RWY 24R:** PAPI(P4L)—GA 3.0° TCH 42'. Rgt tfc.  
**RWY 15-33:** H4010X75 (ASPH) MIRL 0.8% up S  
**RWY 15:** Rgt tfc.  
**SERVICE:** S4 **FUEL** 100LL, JET A **LGT** When ATCT clsd ACTVT PAPI Rwy 06R, 06L, and 24R; VASI Rwy 24L; MIRL Rwy 06R-24L and 15-33—CTAF. Rwy 24R PAPI unusbl byd 4.9 NM.  
**AIRPORT REMARKS:** Attended Mon-Fri 1500-0000Z, Sat 1500-0000Z. Fuel A 1500-0000Z; aft hr svc fee-520-744-7474; 100LL self serve H24 with credit card. Rwy 06L-24R CLSD when ATCT clsd. Rwy 06R and 06L preferred to 10 kt tailwind; aftn wind may favor Rwy 24L and 24R. Use Indg lgts in pat. Rwy 06R fqt ILS practice apchs. Note: See Special Notices—Glider Operations Northwest of Tucson, Arizona.  
**AIRPORT MANAGER:** 520-573-8100  
**WEATHER DATA SOURCES:** AWOS-3 133.35 (520) 578-0269.  
**COMMUNICATIONS:** CTAF 125.8 ATIS 133.35 (520-578-0269)  
 ® **TUCSON APP/DEP CON** 128.5  
**TOWER** 125.8 120.35 (1300-0300Z) **GND CON** 118.2  
**CLEARANCE DELIVERY PHONE:** For CD when ATCT is clsd ctc Tucson Apmh at 520-829-6121.

PHOENIX  
H-4J, L-5C  
IAP, AD



CONTINUED ON NEXT PAGE

## CONTINUED FROM PRECEDING PAGE

AIRSPACE: CLASS D svc 1300-0300Z; other times CLASS E.

RADIO AIDS TO NAVIGATION: NOTAM FILE TUS.

TUCSON (VH) (H) VORTACW 116.0 TUS Chan 107 N32°05.71' W110°54.89' 270° 13.5 NM to fld. 2671/12E.

VOR unusable:

050°-080° byd 30 NM blo 11,500'  
 066°-076° byd 40 NM blo 11,500'  
 066°-076° byd 48 NM  
 077°-131° byd 40 NM  
 141°-164° byd 40 NM  
 191°-231° byd 40 NM  
 245°-249° byd 40 NM  
 290°-300° byd 40 NM blo 8,000'  
 290°-300° byd 52 NM  
 330°-341° byd 40 NM blo 9,000'  
 330°-341° byd 52 NM  
 342°-065° byd 40 NM  
 350°-020° byd 30 NM blo 13,000'

TACAN AZIMUTH unusable:

050°-080° byd 30 NM blo 11,500'  
 155°-165° byd 35 NM blo 13,000'  
 350°-020° byd 30 NM blo 13,000'

DME unusable:

050°-080° byd 30 NM blo 11,500'  
 155°-165° byd 35 NM blo 13,000'  
 350°-020° byd 30 NM blo 13,000'

NDB (HW) 338 RYN N32°08.33' W111°09.69' at fld. 2420/12E. NOTAM FILE PRC. NDB unmonitored.

NDB unusable:

025°-050° byd 25 NM blo 14,500'

ILS/DME 111.1 I-IVL Chan 48 Rwy 06R. Class IT.

COMM/NAV/WEATHER REMARKS: (All rys, except Ry 06L-24R when stated on the ATIS) twr frequency will be 120.35.