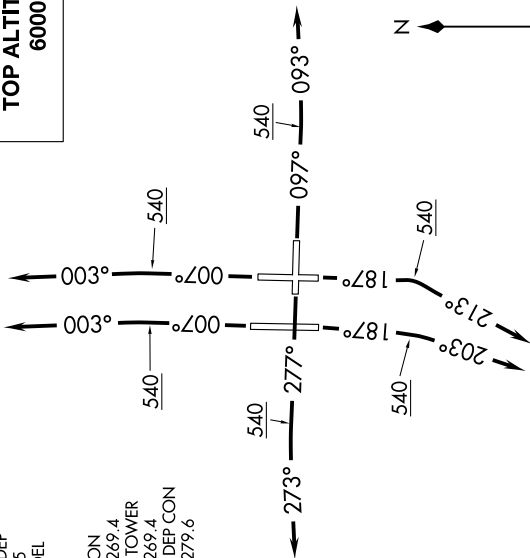


CROWD EIGHT DEPARTURE (RNAV)

SE-3, 10 SEP 2020 to 08 OCT 2020

D-ATIS DEP
128.475
CLNC DEL
133.6
GPDIC
GND CON
121.7 269.4
TAMPA TOWER
119.5 269.4
TAMPA DEP CON
135.5 279.6

TOP ALTITUDE:
6000



NOTE: RNAV 1.
NOTE: Jets only.
NOTE: RADAR required.
NOTE: DME/DME/IRU or GPS required.

TAKEOFF MINIMUMS:

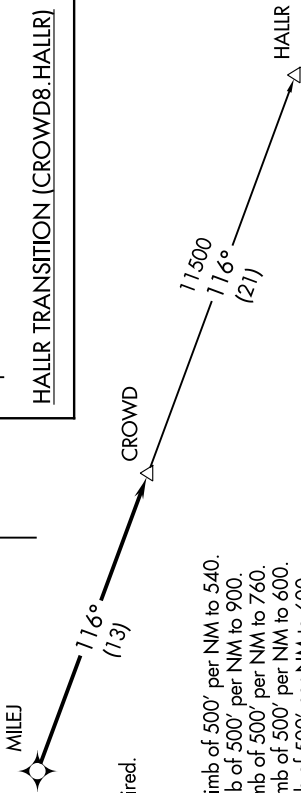
Rwy 1L/R: Standard with minimum climb of 500' per NM to 540.
Rwy 10: Standard with minimum climb of 500' per NM to 900.
Rwy 19L: Standard with minimum climb of 500' per NM to 760.
Rwy 19R: Standard with minimum climb of 500' per NM to 600.
Rwy 28: Standard with minimum climb of 500' per NM to 600.

DEPARTURE ROUTE DESCRIPTION

TAKEOFF RWY 1L/R: Climb on heading 007° to 540, then climb to assigned altitude on heading 003° or as assigned by ATC, thence. . . .
TAKEOFF RWY 10: Climb on heading 097° to 540, then climb to assigned altitude on heading 093° or as assigned by ATC, thence. . . .
TAKEOFF RWY 19L: Climb on heading 187° to 540, then climb to assigned altitude on heading 213° or as assigned by ATC, thence. . . .
TAKEOFF RWY 19R: Climb on heading 187° to 540, then climb to assigned altitude on heading 203° or as assigned by ATC, thence. . . .
TAKEOFF RWY 28: Climb on heading 277° to 540, then climb to assigned altitude on heading 273° or as assigned by ATC, thence. . . .

. . . . expect RADAR vectors to MILEJ, then on track 116° to CROWD. Maintain 6000 or as assigned by ATC, expect clearance to filed altitude within ten (10) minutes after departure.

HALLR TRANSITION (CROWD8.HALLR)



NOTE: Chart not to scale.

CROWD EIGHT DEPARTURE (RNAV)

(CROWD8.CROWD) 03JAN19

SE-3, 10 SEP 2020 to 08 OCT 2020