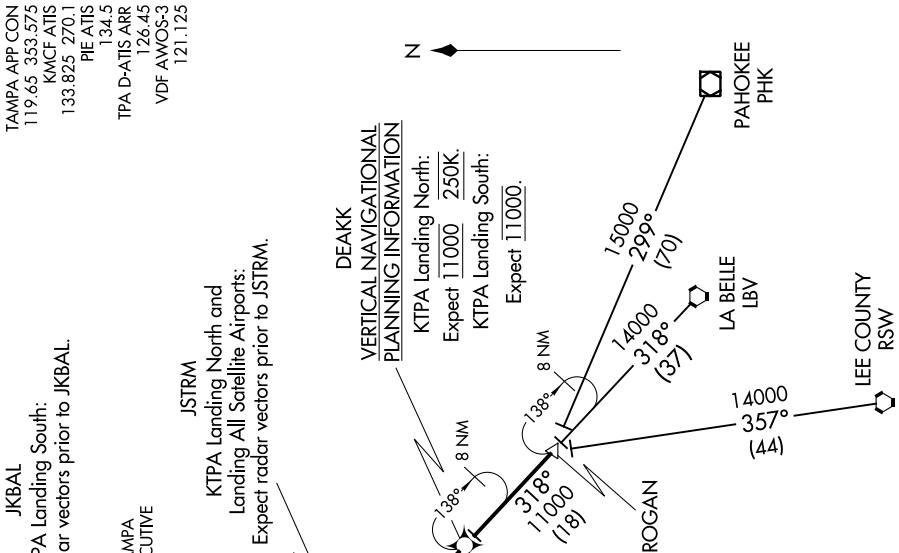


DEAKK FIVE ARRIVAL (RNAV)

TAMPA, FLORIDA

SE-3, 10 SEP 2020 to 08 OCT 2020



NOTE: Chart not to scale.

JKBAL
KTPA Landing South:
Expect radar vectors prior to JKBAL.

JSTRM
KTPA Landing North and
Landing All Satellite Airports:
Expect radar vectors prior to JSTRM.

DEAKK
VERTICAL NAVIGATIONAL
PLANNING INFORMATION
KTPA Landing North:
Expect 11000 2500K.
KTPA Landing South:
Expect 11000.

ST. PETE.
CLEARWATER INTL.

TAMPAX
EXECUTIVE

LAGOOO

MACDILL
AFB

GUZDA

ROGAN

LA BELLE
LBV

PAHOKEE
PHK

LEE COUNTY
RSW

- NOTE: Radar required.
- NOTE: RNAV 1.
- NOTE: DME/DME/IRU or GPS required.
- NOTE: Turbojet and Turboprop aircraft only.
- NOTE: Primary landing Rwy 1L/R, 19L/R.
- NOTE: For non-GPS equipped aircraft: LBV transition: SRQ and LAL must be operational; LBV transition: SRQ, LAL, RSW, and LBV must be operational.

LA BELLE TRANSITION (LBV DEAKK5):
LEE COUNTY TRANSITION (RSW DEAKK5):
PAHOKEE TRANSITION (PHK DEAKK5):

From ROGAN on track 318° to DEAKK. Thence on assigned runway transition.
 Landing North: From over DEAKK on track 318° to JSTRM, then on heading 277°. Expect RADAR vectors.
 Landing South: From over DEAKK on track 318° to JSTRM, then on track 006° to GUZDA, then on track 007° to JKBAL, then left turn on heading 277°. Expect RADAR vectors.

LOST COMMUNICATIONS:
 KTPA Landing South: Continue track to JKBAL, then turn left to intercept the Rwy 19L final approach course, conduct approach.
 KTPA Landing North: Continue track to JSTRM, then turn right to intercept the Rwy 11L final approach course, conduct approach.

SE-3, 10 SEP 2020 to 08 OCT 2020

DEAKK FIVE ARRIVAL (RNAV)

TAMPA, FLORIDA