

# FOOXX FIVE ARRIVAL (RNAV)

TAMPA, FLORIDA

TAMPA APP CON  
 118.8 239.3  
 KCMF ATIS  
 133.825 270.1  
 PIE ATIS  
 134.5  
 TPA D-ATIS ARR  
 126.45  
 VDF AWOS-3  
 121.125

## ARRIVAL ROUTE DESCRIPTION

### HEVNVN TRANSITION (HEVNVN.FOOXX5)

From TABIR on track 156° to DIPAY.

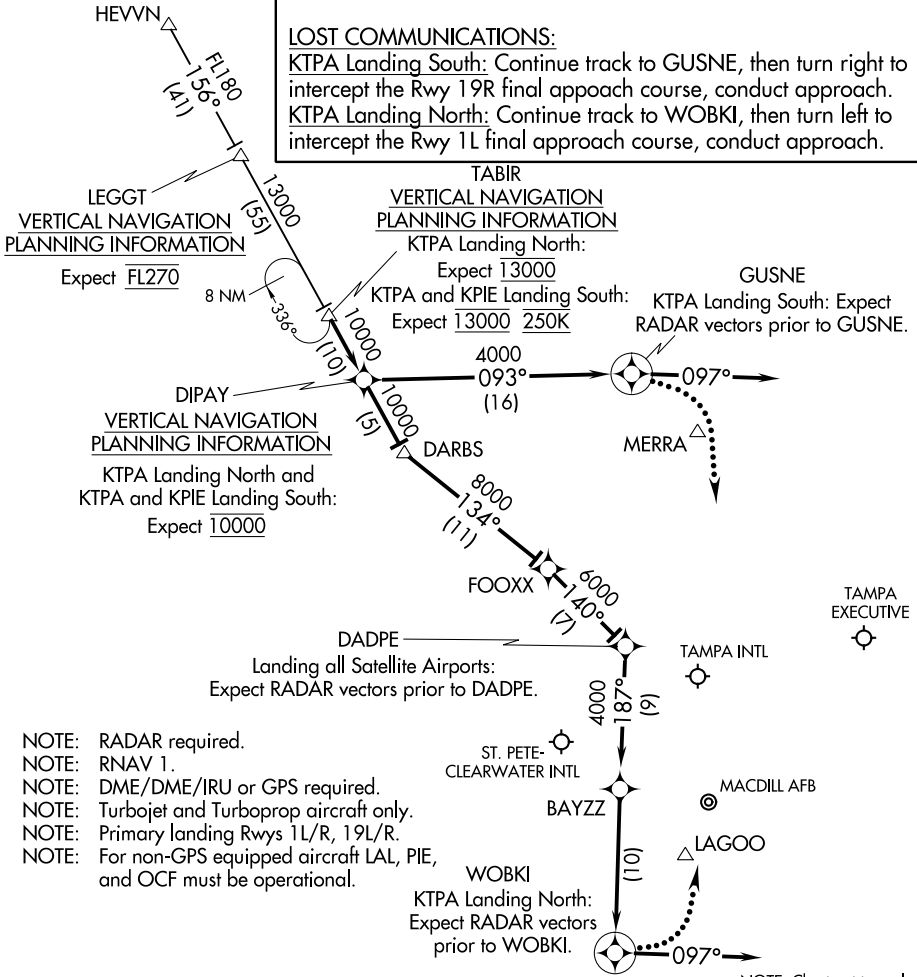
KTPA Landing North Rwy 1L/R and all Satellite Airports: From DIPAY on track 156° to DARBS, then on track 134° to FOOXX, then on track 140° to DADPE, then on track 187° to BAYZZ, then on track 187° to WOBKI, then on heading 097° or as assigned by ATC. Expect RADAR vectors to final approach course.

KTPA Landing South Rwy 19L/R: From DIPAY on track 093° to GUSNE, then on heading 097° or as assigned by ATC. Expect RADAR vectors to final approach course.

### LOST COMMUNICATIONS:

KTPA Landing South: Continue track to GUSNE, then turn right to intercept the Rwy 19R final approach course, conduct approach.

KTPA Landing North: Continue track to WOBKI, then turn left to intercept the Rwy 1L final approach course, conduct approach.



- NOTE: RADAR required.
- NOTE: RNAV 1.
- NOTE: DME/DME/IRU or GPS required.
- NOTE: Turbojet and Turboprop aircraft only.
- NOTE: Primary landing Rws 1L/R, 19L/R.
- NOTE: For non-GPS equipped aircraft LAL, PIE, and OCF must be operational.

NOTE: Chart not to scale.

SE-3, 10 SEP 2020 to 08 OCT 2020

SE-3, 10 SEP 2020 to 08 OCT 2020

# FOOXX FIVE ARRIVAL (RNAV)

(TABIR.FOOXX5) 13SEP18

TAMPA, FLORIDA