

LOC/DME I-AMP 108.9 Chan 26	APP CRS 007°	Rwy Idg 10800 TDZE 11 Apt Elev 26
---	------------------------	--

ILS or LOC RWY 1L

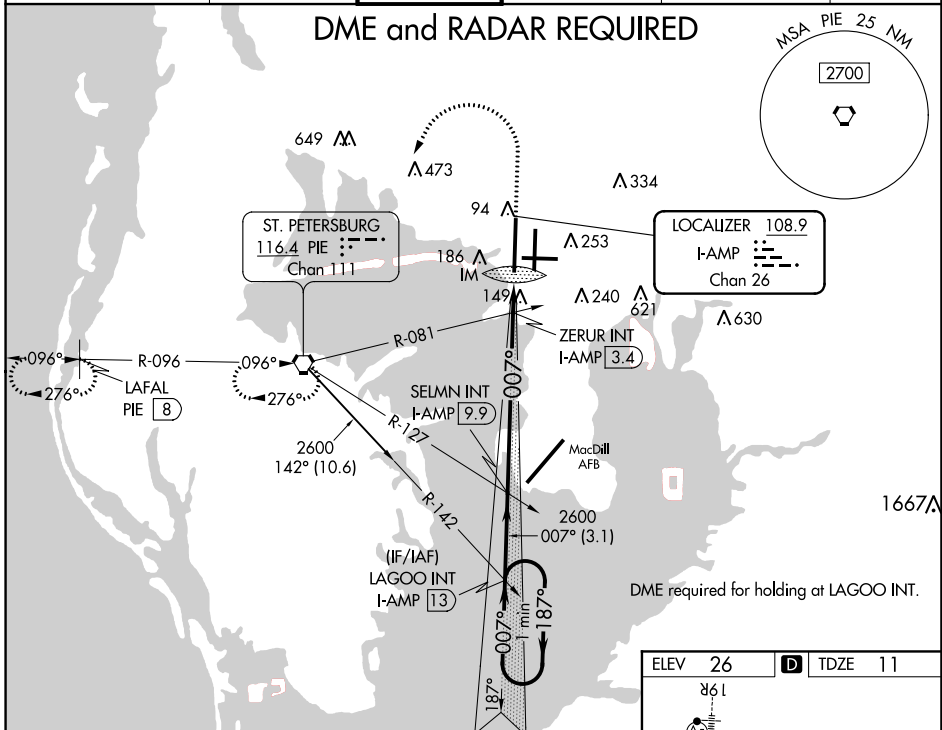
TAMPA INTL (TPA)

Simultaneous approach authorized.
 For inop ALS, increase S-ILS 1L Cat E visibility to RVR 4000 and S-LOC 1L Cats C/D/E visibility to RVR 6000.

ALS-F-2 MISSED APPROACH: Climb to 500 then climbing left turn to 3000 direct PIE VORTAC and hold, continue climb-in-hold to 3000 (TACAN aircraft climb to 500 then climbing left turn to 4000 direct PIE VORTAC then on PIE VORTAC R-276 to LAFAL/PIE 8 DME and hold W, RT, 096 inbound)

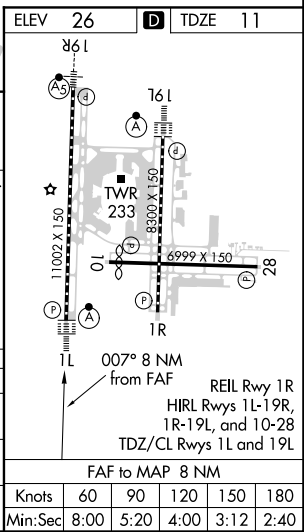
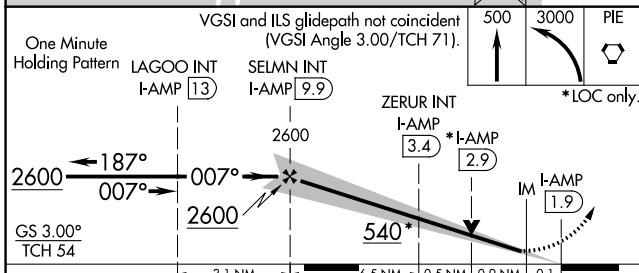
ARR 126.45	D-ATIS 128.475	DEP 118.5 307.175	TAMPA APP CON 119.5 269.4	TAMPA TOWER 121.7 269.4	GND CON 133.6	CLNC DEL 133.6	CPDLC
----------------------	--------------------------	-----------------------------	-------------------------------------	-----------------------------------	-------------------------	--------------------------	-------

DME and RADAR REQUIRED



SE-3, 10 SEP 2020 to 08 OCT 2020

SE-3, 10 SEP 2020 to 08 OCT 2020



CATEGORY	A	B	C	D	E
S-ILS 1L	211/18 200 (200-½)				
S-LOC 1L	400/24	389 (400-½)	400/40	389 (400-¾)	
CIRCLING	560-1	534 (600-1)	680-1¾ 654 (700-1¾)	980-3	954 (1000-3)

Knots	60	90	120	150	180
Min:Sec	8:00	5:20	4:00	3:12	2:40