

LOC/DME I-TWJ <b>111.95</b> Chan <b>56 (Y)</b>	APP CRS <b>007°</b>	Rwy Idg TDZE Apt Elev	<b>8300</b> <b>20</b> <b>26</b>
--	------------------------	-----------------------------	---------------------------------------

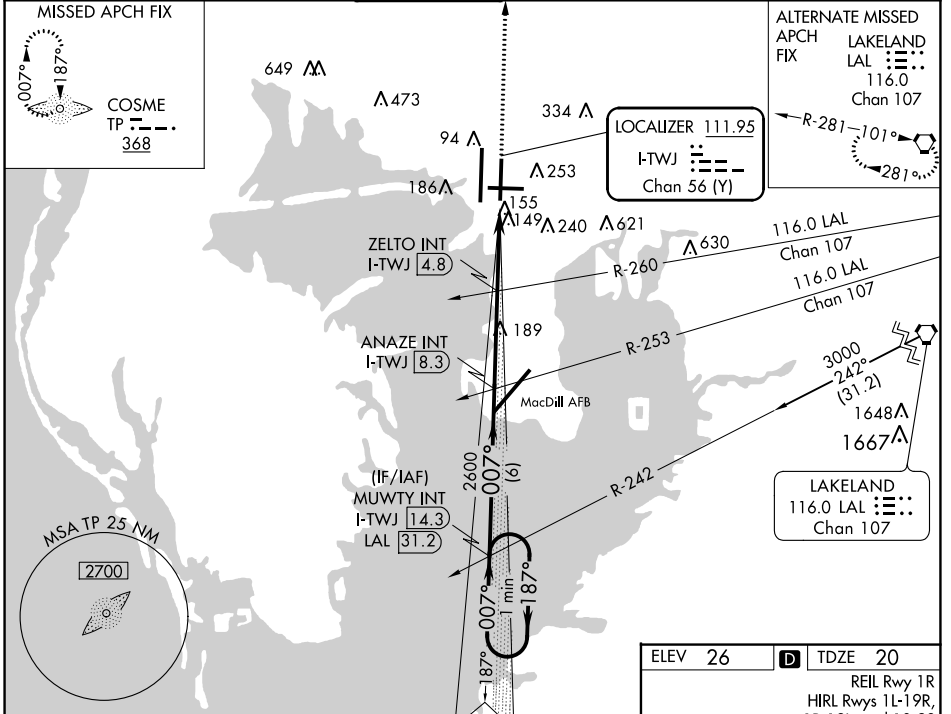
# LOC RWY 1R

TAMPA INTL (TPA)

**ADF required.**

MISSED APPROACH: Climb to 2000 direct COSME LOM and hold.

ARR <b>126.45</b>	D-ATIS <b>128.475</b>	DEP <b>118.5 307.175</b>	TAMPA APP CON <b>119.5 269.4</b>	TAMPA TOWER <b>119.5 269.4</b>	GND CON <b>121.7 269.4</b>	CLNC DEL <b>133.6</b>	CPDLC
----------------------	--------------------------	-----------------------------	-------------------------------------	-----------------------------------	-------------------------------	--------------------------	-------



SE-3, 10 SEP 2020 to 08 OCT 2020

SE-3, 10 SEP 2020 to 08 OCT 2020

One Minute Holding Pattern

MUWTY INT I-TWJ **14.3**

ANAZE INT I-TWJ **8.3**

ZELTO INT I-TWJ **4.8**

2000 TP

2600 ← 187° 007° → 007° 2600

VGSI and descent angles not coincident (VGSI Angle 3.00/TCH 71).

1300 3.50° TCH 55

6 NM 3.5 NM 2.1 NM 1.2 NM

CATEGORY	A	B	C	D
S-1R	1300-1¼ 1280 (1300-1¼)	1300-1½ 1280 (1300-1½)	1300-3	1280 (1300-3)
<b>C</b> CIRCLING	1300-1¼ 1274 (1300-1¼)	1300-1½ 1274 (1300-1½)	1300-3	1274 (1300-3)
ZELTO FIX MINIMUMS (DUAL VOR RECEIVERS OR DME REQUIRED)				
S-1R	460-1	440 (500-1)	460-1¾ 680-1¾ 654 (700-1¾)	440 (500-1¾) 980-3 954 (1000-3)
<b>C</b> CIRCLING	560-1	534 (600-1)		

