

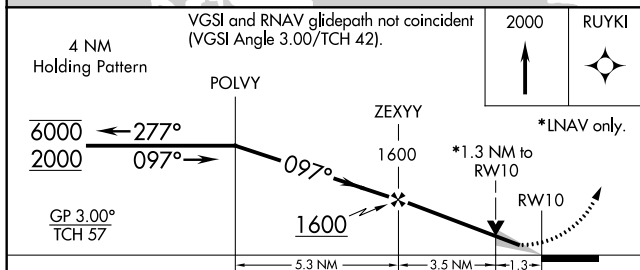
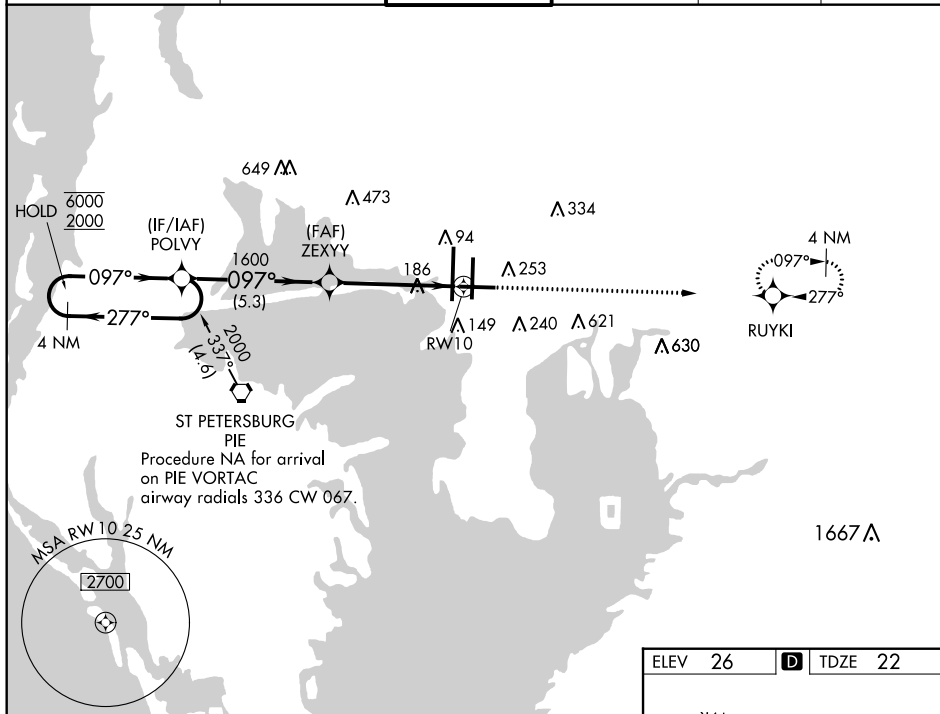
WAAS CH <b>77720</b> <b>W10A</b>	APP CRS <b>097°</b>	Rwy Idg TDZE <b>22</b> Apt Elev <b>26</b>	<b>6501</b>
--	------------------------	---	-------------

# RNAV (GPS) RWY 10

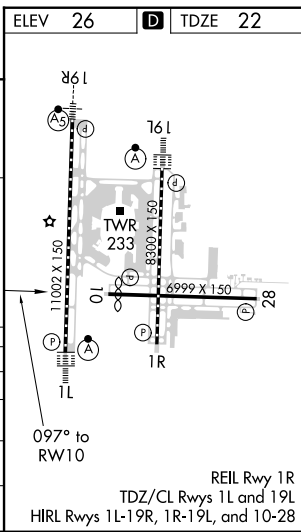
TAMPA INTL (TPA)

RNP APCH.		MISSED APPROACH: Climb to 2000 direct RUYKI and hold.	
▼ For uncompensated Baro-VNAV systems, LNAV/VNAV NA below 2°C or above 54°C.			

ARR	D-ATIS	DEP	TAMPA APP CON	TAMPA TOWER	GND CON	CLNC DEL	CPDLC
<b>126.45</b>		<b>128.475</b>	<b>118.5 307.175</b>	<b>119.5 269.4</b>	<b>121.7 269.4</b>	<b>133.6</b>	



CATEGORY	A	B	C	D
LPV DA		272-1	250 (300-1)	
LNAV/VNAV DA		436-1 3/8	414 (500-1 3/8)	
LNAV MDA	480-1	458 (500-1)	480-1 3/8	458 (500-1 3/8)
CIRCLING	560-1	534 (600-1)	680-1 3/4	980-3
			654 (700-1 3/4)	954 (1000-3)



SE-3, 10 SEP 2020 to 08 OCT 2020

SE-3, 10 SEP 2020 to 08 OCT 2020