


RNAV (GPS) RWY 19R

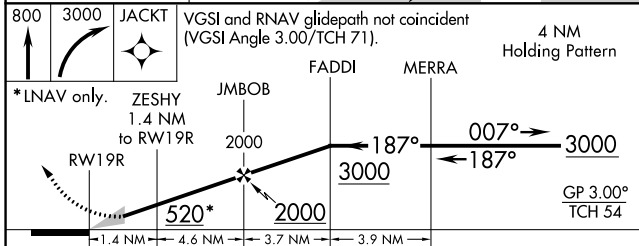
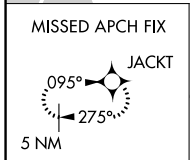
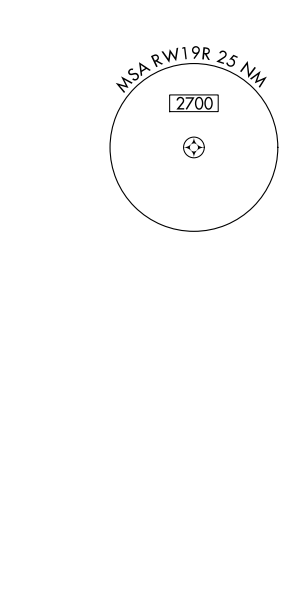
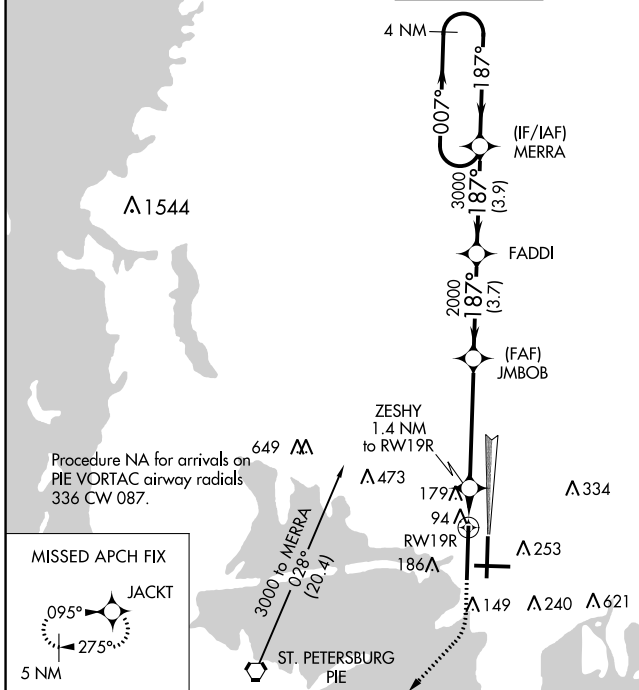
TAMPA INTL (TPA)

WAAS CH 40406 W19B	APP CRS 187°	Rwy Idg 11002 TDZE 21 Apt Elev 26
--	------------------------	--

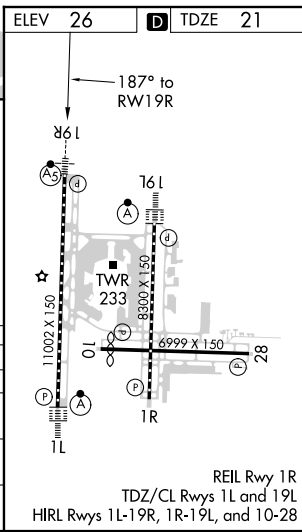
⚠ For uncompensated Baro-VNAV systems, LNAV/VNAV NA below -15°C (5°F) or above 43°C (109°F). DME/DME RNP-0.3 NA. For inop MALSR, increase LPV Cat E visibility to ¾ mile, LNAV/VNAV Cat E visibility to 1½ mile, and LNAV Cat E visibility to 1¼. Simultaneous approach authorized with Rwy 19L. LNAV procedure NA during simultaneous operations. Use of FD or AP providing RNAV track guidance required during simultaneous operations. **RVR 1800 authorized with use of FD or AP or HUD to DA.

MALSR
 MISSED APPROACH: Climb to 800 then climbing right turn to 3000 direct JACKT and hold, continue climb-in-hold to 3000.

ARR 126.45	D-ATIS 128.475	DEP 118.5 307.175	TAMPA APP CON 119.5 269.4	TAMPA TOWER 121.7 269.4	GND CON 121.7 269.4	CLNC DEL 133.6	CPDLC
----------------------	--------------------------	-----------------------------	-------------------------------------	-----------------------------------	-------------------------------	--------------------------	-------



CATEGORY	A	B	C	D	E
LPV DA**	221/24		200 (200-½)		
LNAV/VNAV DA	466/50		445 (500-1)		
LNAV MDA	440/24	419 (500-½)	440/40	419 (500-¾)	
CIRCLING	560-1	534 (600-1)	560-1½ 534 (600-1½)	580-2 554 (600-2)	980-3 954 (1000-3)



SE-3, 10 SEP 2020 to 08 OCT 2020

SE-3, 10 SEP 2020 to 08 OCT 2020