

WAAS CH 70520 W28A	APP CRS 277°	Rwy Idg TDZE Apt Elev	6501 26 26
--	------------------------	-----------------------------	---------------------------------------

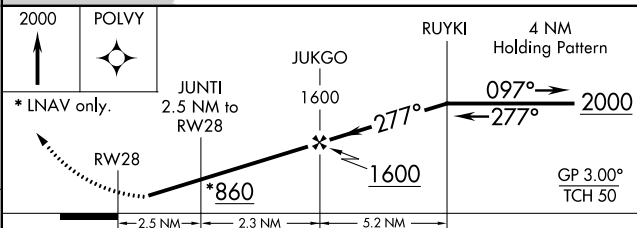
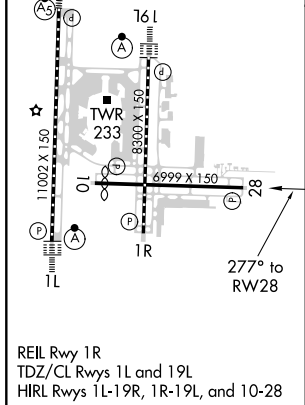
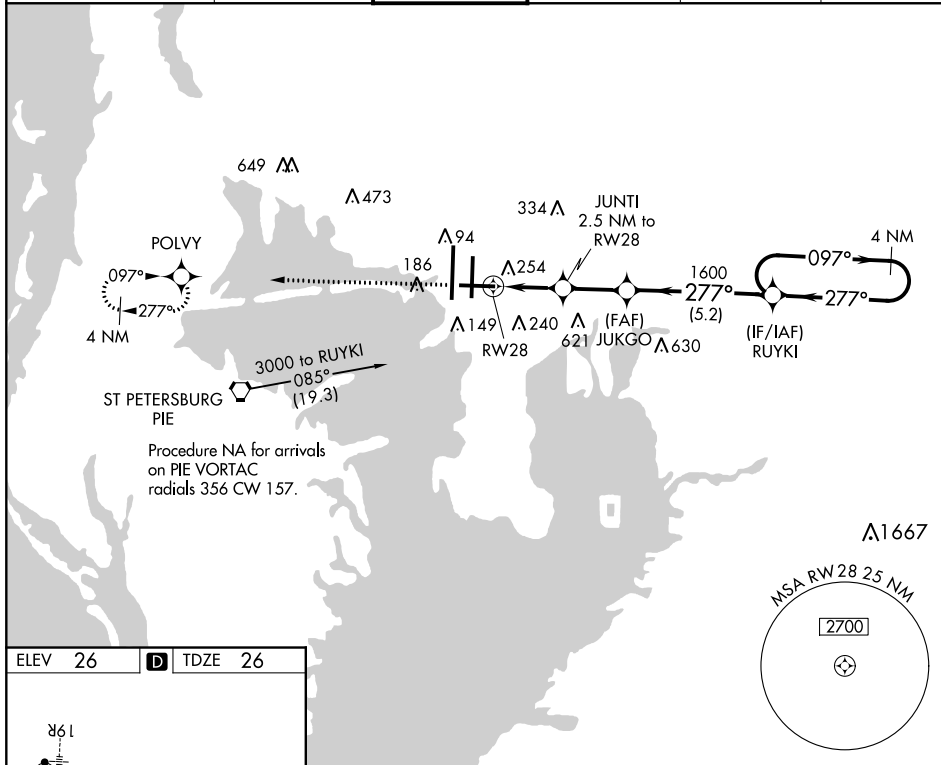
RNAV (GPS) RWY 28

TAMPA INTL (TPA)

For uncompensated Baro-VNAV systems, LNAV/VNAV NA below -15°C (5°F) or above 43°C (109°F). DME/DME RNP-0.3 NA. Helicopter visibility reduction below ¾ SM NA.

MISSED APPROACH: Climb to 2000 direct POLY and hold.

ARR 126.45	D-ATIS DEP 128.475	TAMPA APP CON 118.5 307.175	TAMPA TOWER 119.5 269.4	GND CON 121.7 269.4	CLNC DEL 133.6	CPDLC
----------------------	---------------------------------	---------------------------------------	-----------------------------------	-------------------------------	--------------------------	-------



CATEGORY	A	B	C	D
LPV DA		389-1½	363 (400-1½)	
LNAV/VNAV DA		468-1½	442 (500-1½)	
LNAV MDA	520-1	494 (500-1)	520-1½	494 (500-1½)
CIRCLING	560-1	534 (600-1)	560-1½	580-2 554 (600-2)

SE-3, 10 SEP 2020 to 08 OCT 2020

SE-3, 10 SEP 2020 to 08 OCT 2020