

RNAV (RNP) Y RWY 19L

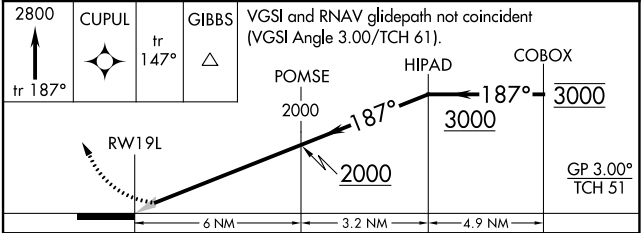
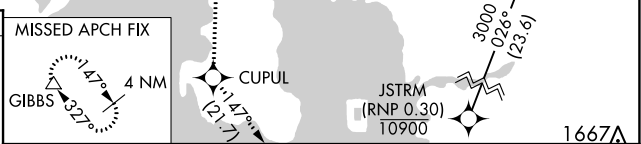
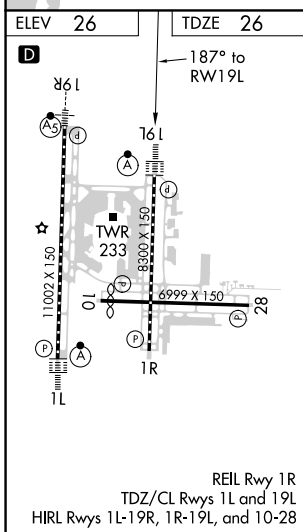
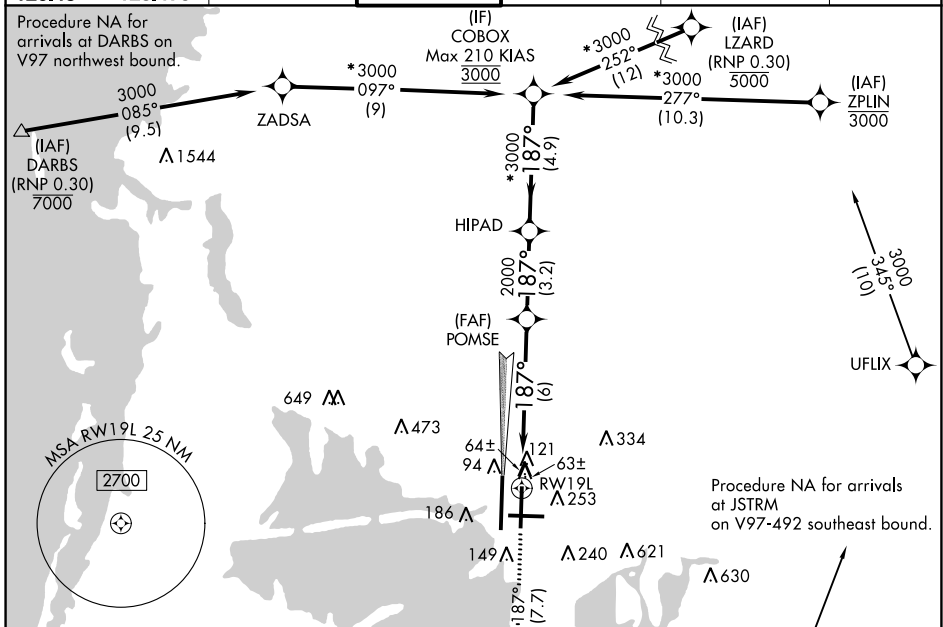
TAMPA INTL (TPA)

APP CRS	Rwy Idg	8300
187°	TDZE	26
	Apt Elev	26

▼ For uncompensated Baro-VNAV systems, procedure NA below 1°C (34°F) or above 49°C (120°F). GPS required. For inop ALSF, increase RNP 0.11 all Cats visibility to 1, RNP 0.23 all Cats visibility to 1½ and RNP 0.30 all Cats visibility to 1¾. Simultaneous approach authorized with Rwy 19R. Use of FD or AP providing RNAV track guidance required during simultaneous operations.

ALSF-2
 MISSED APPROACH: Climb to 2800 on track 187° to CUPUL and on track 147° to GIBBS and hold.

ARR	D-ATIS	DEP	TAMPA APP CON	TAMPA TOWER	GND CON	CLNC DEL	CPDLC
126.45		128.475	118.5 307.175	119.5 269.4	121.7 269.4	133.6	



CATEGORY	A	B	C	D
RNP 0.11 DA		329/24	303 (400-½)	
RNP 0.23 DA		368/32	342 (400-¾)	
RNP 0.30 DA		442/45	416 (500-¾)	

AUTHORIZATION REQUIRED

SE-3, 10 SEP 2020 to 08 OCT 2020

SE-3, 10 SEP 2020 to 08 OCT 2020