

WAAS CH <b>49100</b> W19A	APP CRS <b>187°</b>	Rwy Idg TDZE <b>26</b> Apt Elev <b>26</b>	<b>8300</b>
---------------------------------	------------------------	---	-------------

# RNAV (GPS) Z RWY 19L

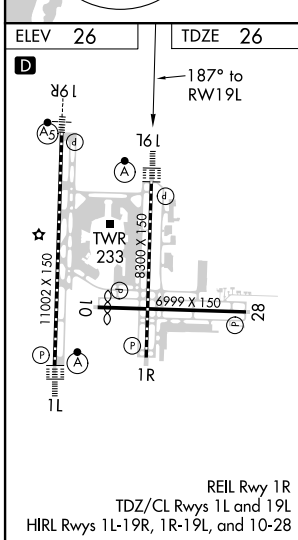
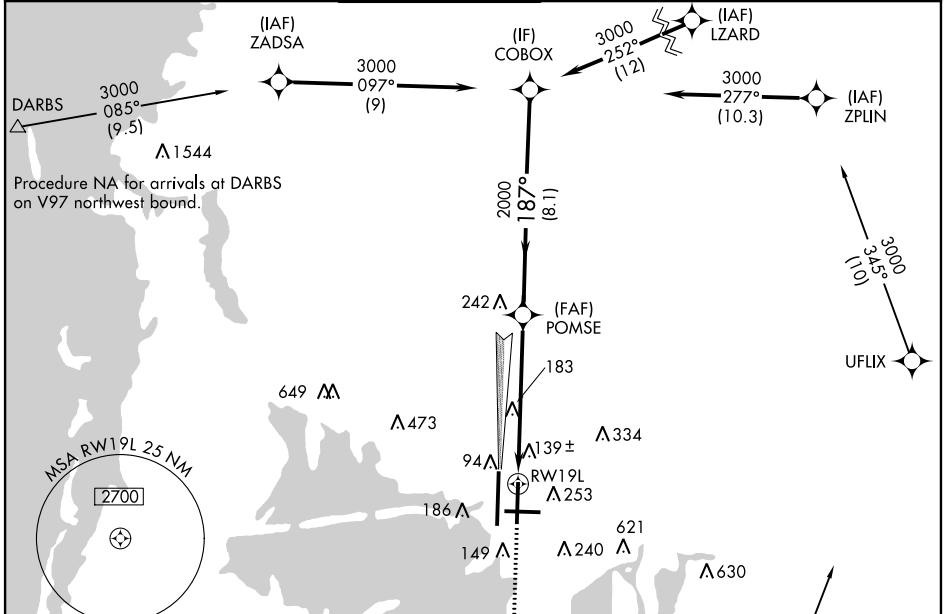
TAMPA INTL (TPA)

**▼** For uncompensated Baro-VNAV systems, LNAV/VNAV NA below -15°C (5°F) or above 43°C (109°F). DME/DME RNP-0.3 NA. Simultaneous approach authorized with Rwy 19R. LNAV procedure NA during simultaneous operations. Use of FD or AP providing RNAV track guidance required during simultaneous operations. \*\* RVR 1800 authorized with use of FD or AP or HUD to DA.

ALSF-2

MISSED APPROACH: Climb to 2800 direct CUPUL and on track 147° to GIBBS and hold.

ARR <b>126.45</b>	D-ATIS	DEP <b>128.475</b>	TAMPA APP CON <b>118.5 307.175</b>	TAMPA TOWER <b>119.5 269.4</b>	GND CON <b>121.7 269.4</b>	CLNC DEL <b>133.6</b>	CPDLC
-------------------	--------	--------------------	------------------------------------	--------------------------------	----------------------------	-----------------------	-------



ELEV 26	TDZE 26	MISSED APCH FIX	
		2800 CUPUL GIBBS VGS1 and RNAV glidepath not coincident (VGS1 Angle 3.00/TCH 61).	
*LNAV only. *1.2 NM to RWY 19L		Procedure Turn NA	
1.2 NM 4.9 NM 8.1 NM		GP 3.00° TCH 51	
CATEGORY	A	B	C
LPV DA**	226/24	200 (200-½)	
LNAV/VNAV DA	440/45	414 (500-¾)	
LNAV MDA	460/24	434 (500-½)	460/40 434 (500-¾)
CIRCLING	560-1	534 (600-1)	560-1½ 580-2 534 (600-1½) 554 (600-2)

SE-3, 10 SEP 2020 to 08 OCT 2020

SE-3, 10 SEP 2020 to 08 OCT 2020