


LOC I-MTJ <b>111.3</b>	APP CRS <b>168°</b>	Rwy Idg <b>10000</b>
		TDZE <b>5708</b>
		Apt Elev <b>5759</b>

# ILS or LOC RWY 17

MONTROSE RGNL (MTJ)

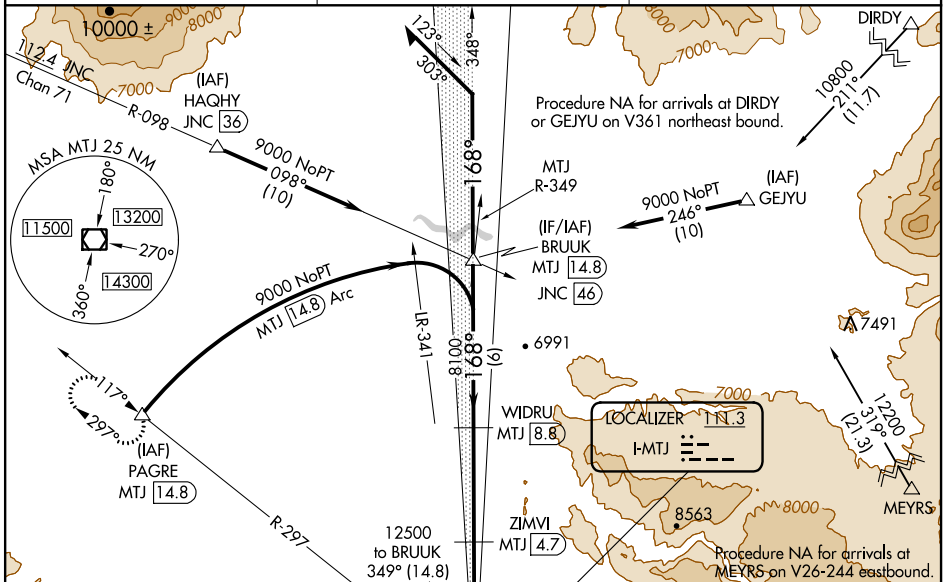
From DIRDY, MYERS, GEJYU: RNAV 1-GPS required. DME required.

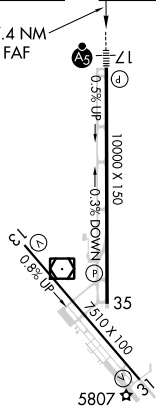
**NA** Circling NA east of Rwy 17 and northeast of Rwy 31. Circling Rwy 31 NA at night. When Circling Rwy 13 at night, operational VGSI required, remain on or above VGSI glidepath until threshold. DME from MTJ VOR/DME. Simultaneous reception of I-MTJ and MTJ DME required. For inop ALS, increase S-LOC 17 Cat C/D visibility to 3/8 SM.

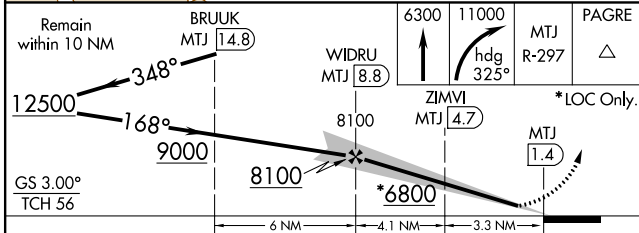
**MALSR**  


**MISSED APPROACH:** Climb to 6300 then climbing right turn to 11000 on heading 325° and MTJ VOR/DME R-297 to PAGRE/MTJ 14.8 DME and hold, continue climb-in-hold to 11000.

ASOS <b>135.225</b>	DENVER CENTER <b>127.1 343.65</b>	UNICOM <b>122.8 (CTAF)</b>
------------------------	--------------------------------------	-------------------------------



ELEV 5759	<b>D</b>	TDZE 5708
168° 7.4 NM from FAF		
		



CATEGORY	A	B	C	D
S-ILS 17		5908-1/2	200 (200-1/2)	
S-LOC 17		6020-1/2	312 (300-1/2)	
<b>C</b> CIRCLING	6280-1 521 (600-1)	6320-1 561 (600-1)	6380-1 3/4 621 (700-1 3/4)	6800-3 1041 (1100-3)

REIL Rws 13, 31, and 35

HIRL Rws 13-31 and 17-35

SW-1, 10 SEP 2020 to 08 OCT 2020

SW-1, 10 SEP 2020 to 08 OCT 2020