

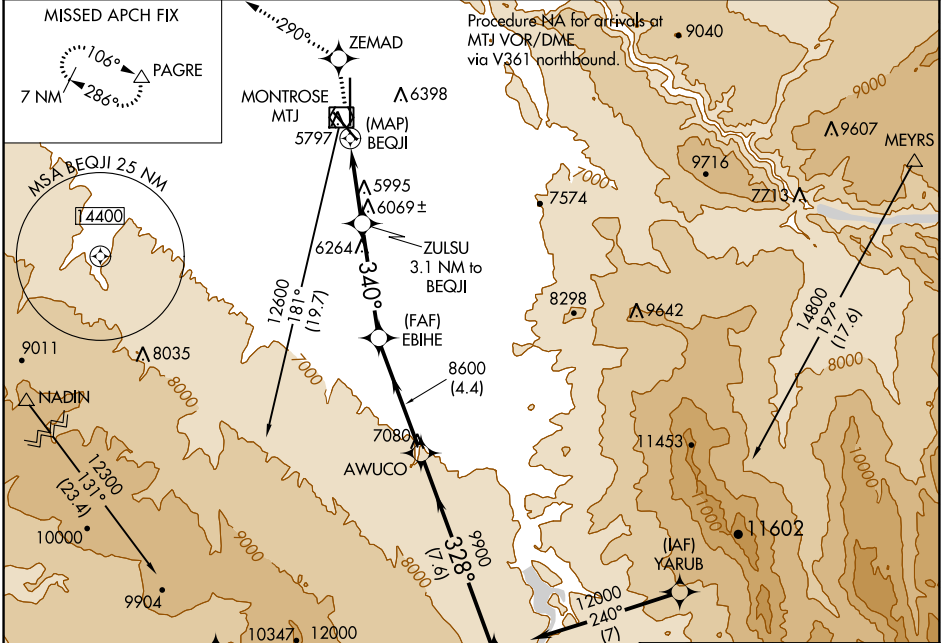
APP CRS	Rwy Idg	10000
340°	TDZE	5734
	Apt Elev	5759

RNAV (GPS) RWY 35

MONTROSE RGNL (MTJ)

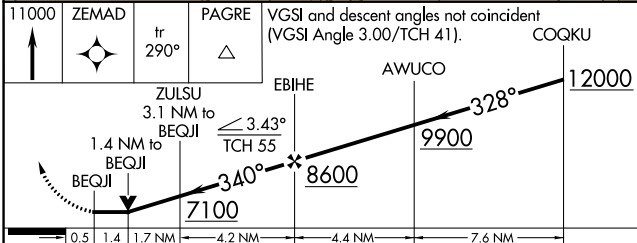
<p>▼ DME/DME RNP-0.3 NA. Night landing Rwy 13 operational VGSI required, remain on or above VGSI glidepath until threshold.</p> <p>▲ Night landing Rwy 31 NA. Helicopter visibility below 3/4 SM NA.</p>	<p>MISSED APPROACH: Climb to 11000 direct ZEMAD on track 290° to PAGRE and hold, continue climb-in-hold to 11000.</p>
--	---

<p>ASOS</p> <p>135.225</p>	<p>DENVER CENTER</p> <p>127.1 343.65</p>	<p>UNICOM</p> <p>122.8 (CTAF)</p>
-----------------------------------	---	--

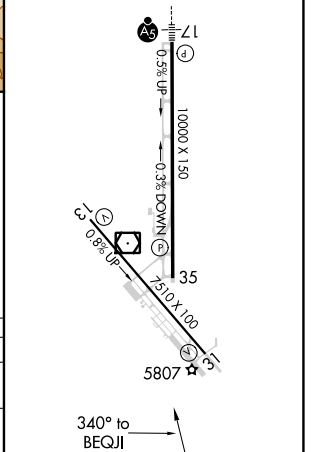


ELEV 5759	D TDZE 5734
REIL Rws 13, 31 and 35	
HIRL Rws 13-31 and 17-35	

11000	ZEMAD	PAGRE	VGSI and descent angles not coincident (VGSI Angle 3.00/TCH 41).	COQKU
↑	✦	△		
	tr 290°			



CATEGORY	A	B	C	D
LNVA MDA	6380-1	646 (700-1)	6380-1 3/4 646 (700-1 3/4)	6380-2 646 (700-2)
CIRCLING	6380-1 621 (700-1)	6420-1 661 (700-1)	6640-2 3/4 881 (900-2 3/4)	6700-3 941 (1000-3)



SW-1, 10 SEP 2020 to 08 OCT 2020

SW-1, 10 SEP 2020 to 08 OCT 2020