

VOR/DME MTJ 117.1 Chan 118	APP CRS 117°	Rwy Idg TDZE Apt Elev	7510 5723 5759
--	------------------------	-----------------------------	---

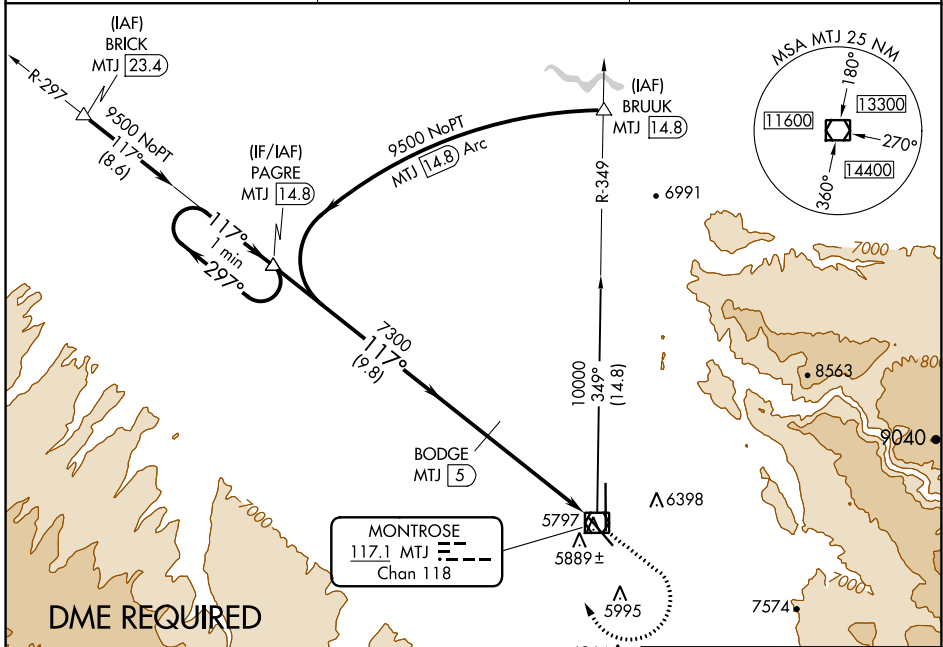
VOR RWY 13

MONTRÖSE RGNL (MTJ)

⚠ Helicopter visibility reduction below 1 SM NA. Night landing: Rwy 13 operational VGSI required, remain on or above VGSI glidepath until threshold. Night landing Rwy 31 NA. DME required.

MISSED APPROACH: Climb to 6600 then climbing right turn to 9500 on MTJ VOR/DME R-297 to PAGRE/14.8 DME and hold.

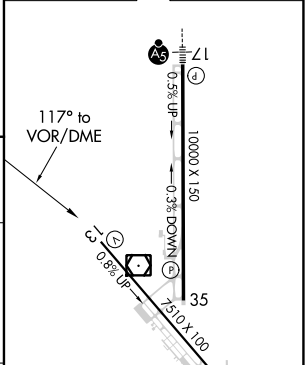
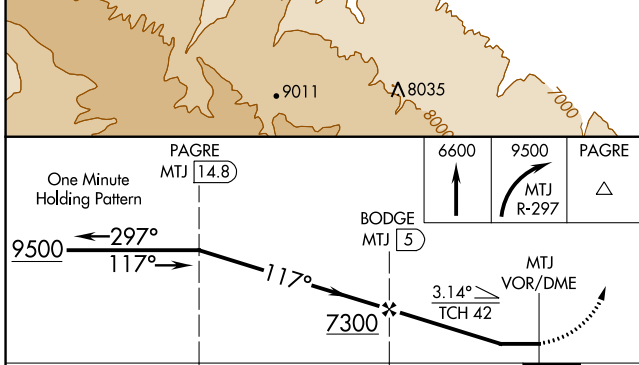
ASOS 135.225	DENVER CENTER 127.1 343.65	UNICOM 122.8 (CTAF)
------------------------	--------------------------------------	-------------------------------



SW-1, 10 SEP 2020 to 08 OCT 2020

SW-1, 10 SEP 2020 to 08 OCT 2020

ELEV 5759	D	TDZE 5723
-----------	----------	-----------



CATEGORY	A	B	C	D
S-13	6140-1	421 (400-1)	6140-1¼	421 (400-1¼)
CIRCLING	6260-1 501 (600-1)	6420-1 661 (700-1)	6640-2¾ 881 (900-2¾)	6700-3 941 (1000-3)

REIL Rws 13, 31 and 35 **Ⓛ**
HIRL Rws 13-31 and 17-35 **Ⓛ**