

WAAS CH <b>77711</b>	APP CRS <b>W13A</b>	Rwy ldg TDZE Apt Elev	<b>6144</b> <b>10</b> <b>10</b>
-------------------------	------------------------	-----------------------------	---------------------------------------

# RNAV (GPS) RWY 13

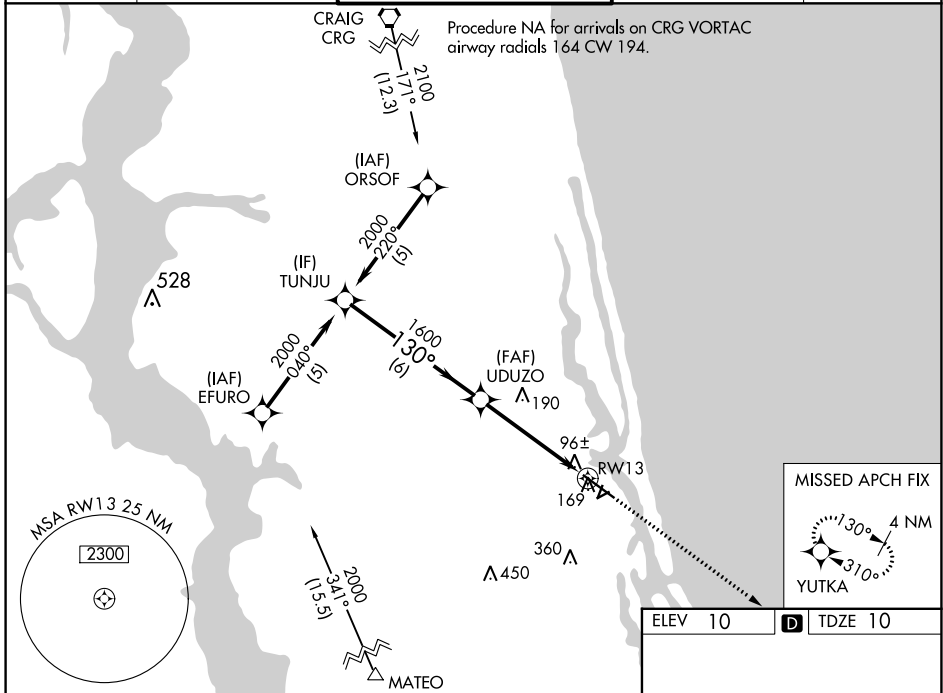
NORTHEAST FLORIDA RGNL (SGJ)

RNP APCH

▼ Baro-VNAV NA when using Jacksonville NAS/Towers Field altimeter setting. For uncompensated Baro-VNAV systems, LNAV/VNAV NA below -15°C (5°F) or above 54°C (130°F). Rwy 13 helicopter visibility reduction below ¼ SM NA. When local altimeter setting not received, use Jacksonville NAS (Towers Field) altimeter setting; increase all DA 57 feet and all MDA 60 feet. Increase LPV and LNAV/VNAV all Cats, LNAV Cat C and Circling Cat C/D visibility ½ SM. Circling Rwy 2, 6 NA at night.

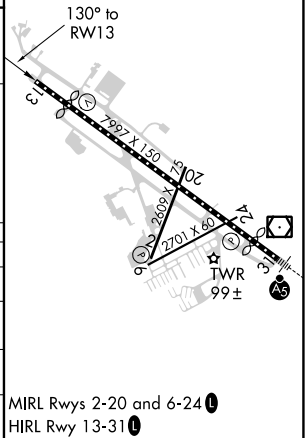
MISSED APPROACH:  
Climb to 2000 direct YUTKA and hold.

ATIS <b>119.625</b>	JACKSONVILLE APP CON <b>120.75</b>	ST AUGUSTINE TOWER ★ <b>127.625 (CTAF) 269.475</b>	GND CON <b>121.175 251.125</b>	UNICOM <b>122.95</b>
------------------------	---------------------------------------	---	-----------------------------------	-------------------------



ELEV 10	TDZE 10
---------	---------

Procedure Turn NA	TUNJU	VGSIs and RNAV glidepath not coincident (VGSIs Angle 3.00/TCH 44).		2000	YUTKA
GP 3.00°	TCH 58				
CATEGORY	A	B	C	D	
LPV DA		357-1¼	347 (400-1¼)		
LNAV/VNAV DA		391-1¼	381 (400-1¼)		
LNAV MDA	460-1	450 (500-1)	460-1¼ 450 (500-1¼)	460-1½ 450 (500-1½)	
CIRCLING	520-1 510 (600-1)	580-1 570 (600-1)	660-1¾ 650 (700-1¾)	780-2½ 770 (800-2½)	



SE-3, 03 DEC 2020 to 31 DEC 2020

SE-3, 03 DEC 2020 to 31 DEC 2020