

LOC I-TWF 108.3	APP CRS 258°	Rwy Idg 8703
		TDZE 4154
		Apt Elev 4154

ILS or LOC RWY 26

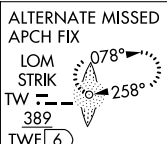
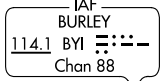
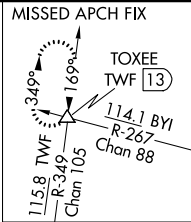
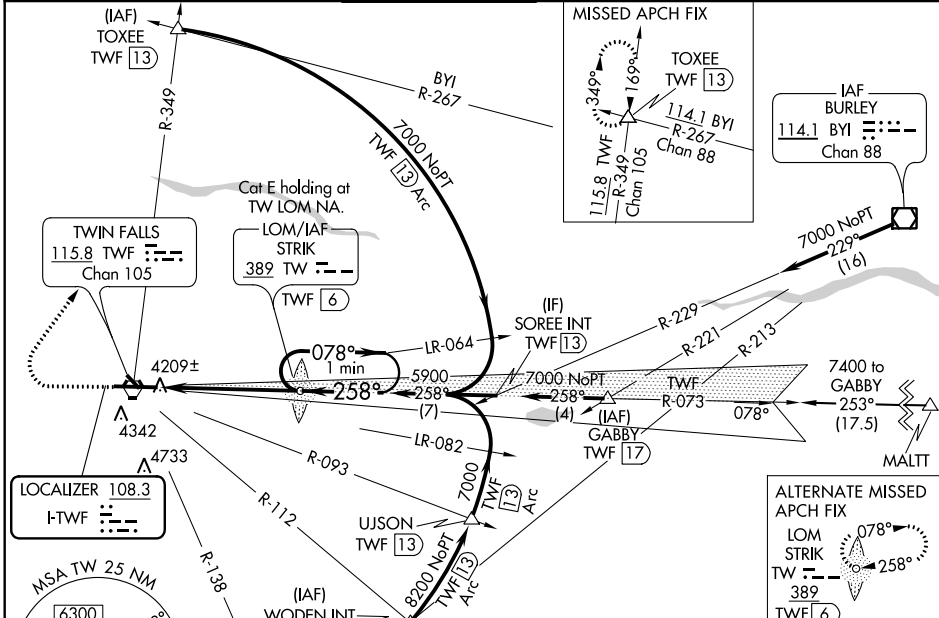
JOSLIN FIELD-MAGIC VALLEY RGNL (TWF')

Night landing: Rwy 30 NA. When local altimeter setting not received, use Jerome altimeter setting and increase all DA 49 feet, and all MDA 60 feet, increase S-LOC 26 Cat C-E visibility 1/8 mile. For inoperative MALSRR when using local or Jerome altimeter setting, increase S-ILS 26 Cat E visibility 1/4 mile and S-LOC 26 Cat E visibility 1/2 mile. ADF or DME required.



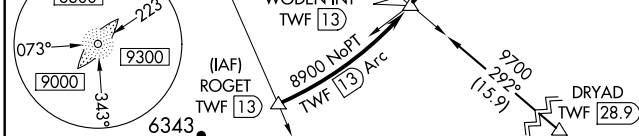
MISSED APPROACH: Climb to 4700 then climbing right turn to 7000 on heading 020° and TWF VORTAC R-349 to TOXEE INT/TWF 13 DME and hold.

ASOS 135.025	TWIN FALLS APP CON* 126.7 353.75	TWIN FALLS TOWER* 118.2 (CTAF) 0 317.5	GND CON 121.7	CLNC DEL 123.65	UNICOM 122.95
------------------------	--	--	-------------------------	---------------------------	-------------------------

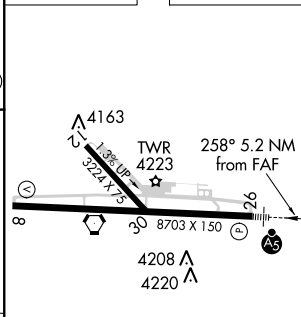
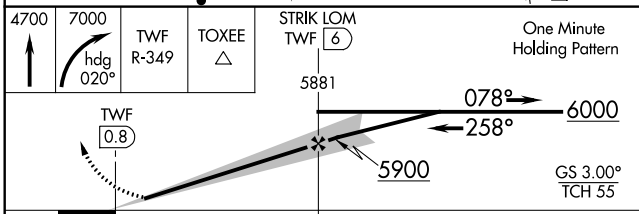


NW-1, 03 DEC 2020 to 31 DEC 2020

NW-1, 03 DEC 2020 to 31 DEC 2020



ELEV 4154	TDZE 4154
-----------	-----------



CATEGORY	A	B	C	D	E
S-ILS 26		4354-1/2	200 (200-1/2)		
S-LOC 26		4480-1/2	326 (400-1/2)		
CIRCLING	4700-1 546 (600-1)	4780-1 626 (700-1)	5100-2 3/4 946 (1000-2 3/4)	5100-3	946 (1000-3)

REIL Rwy 8	
HIRL Rwy 8-26	
FAF to MAP 5.2 NM	
Knots	60 90 120 150 180
Min:Sec	5:12 3:28 2:36 2:05 1:44