

WAAS CH 40211 W08A	APP CRS 078°	Rwy Idg TDZE Apt Elev	8703 4149 4154
----------------------------------------	------------------------	-----------------------------	-------------------------------------------

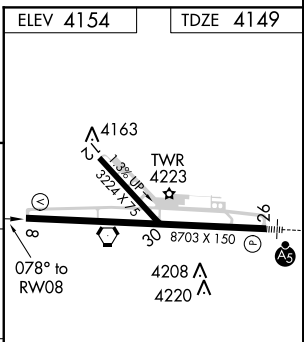
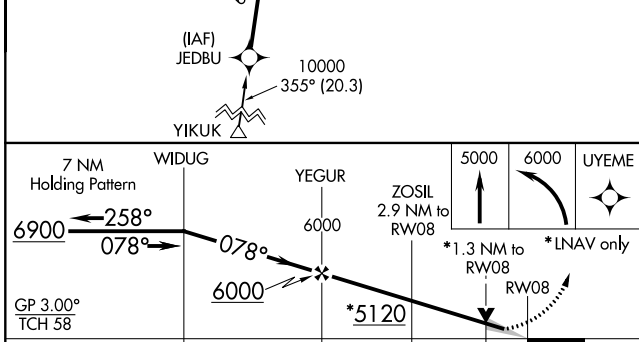
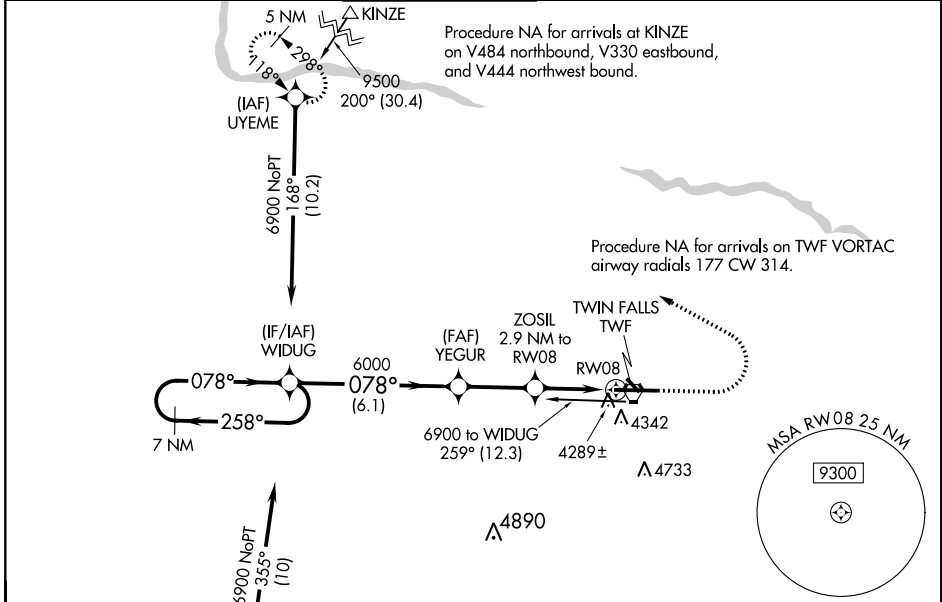
RNAV (GPS) RWY 8

JOSLIN FIELD-MAGIC VALLEY RGNL (TWF)

▼ Night landing: Rwy 30 NA. Baro-VNAV NA when using Jerome altimeter setting.
▲ For uncompensated Baro-VNAV systems, LNAV/VNAV NA below -16°C (4°F) or above 48°C (120°F). DME/DME RNP-0.3 NA. VDP NA with Jerome altimeter setting.
 When local altimeter setting not received, use Jerome altimeter setting and increase all DA 49 feet and all MDA 60 feet, and increase LPV and LNAV/VNAV all Cats visibility ½ mile, and LNAV Cats C and D visibility ½ mile, and Circling Cat C visibility ¼ mile.

MISSED APPROACH: Climb to 5000 then climbing left turn to 6000 direct UYEME and hold.

ASOS 135.025	TWIN FALLS APP CON * 126.7 353.75	TWIN FALLS TOWER * 118.2 (CTAF) 0 317.5	GND CON 121.7	CLNC DEL 123.65	UNICOM 122.95
------------------------	---------------------------------------------	---------------------------------------------------	-------------------------	---------------------------	-------------------------



CATEGORY	A	B	C	D
LPV DA		4399-3/4	250 (300-3/4)	
LNAV/VNAV DA		4673-13/4	524 (600-13/4)	
LNAV MDA	4620-1	471 (500-1)	4620-13/8	471 (500-13/8)
CIRCLING	4700-1 546 (600-1)	4780-1 626 (700-1)	5100-23/8 946 (1000-23/8)	5100-3 946 (1000-3)

REIL Rwy 8 **0**
 HIRL Rwy 8-26 **0**

NW-1, 03 DEC 2020 to 31 DEC 2020

NW-1, 03 DEC 2020 to 31 DEC 2020