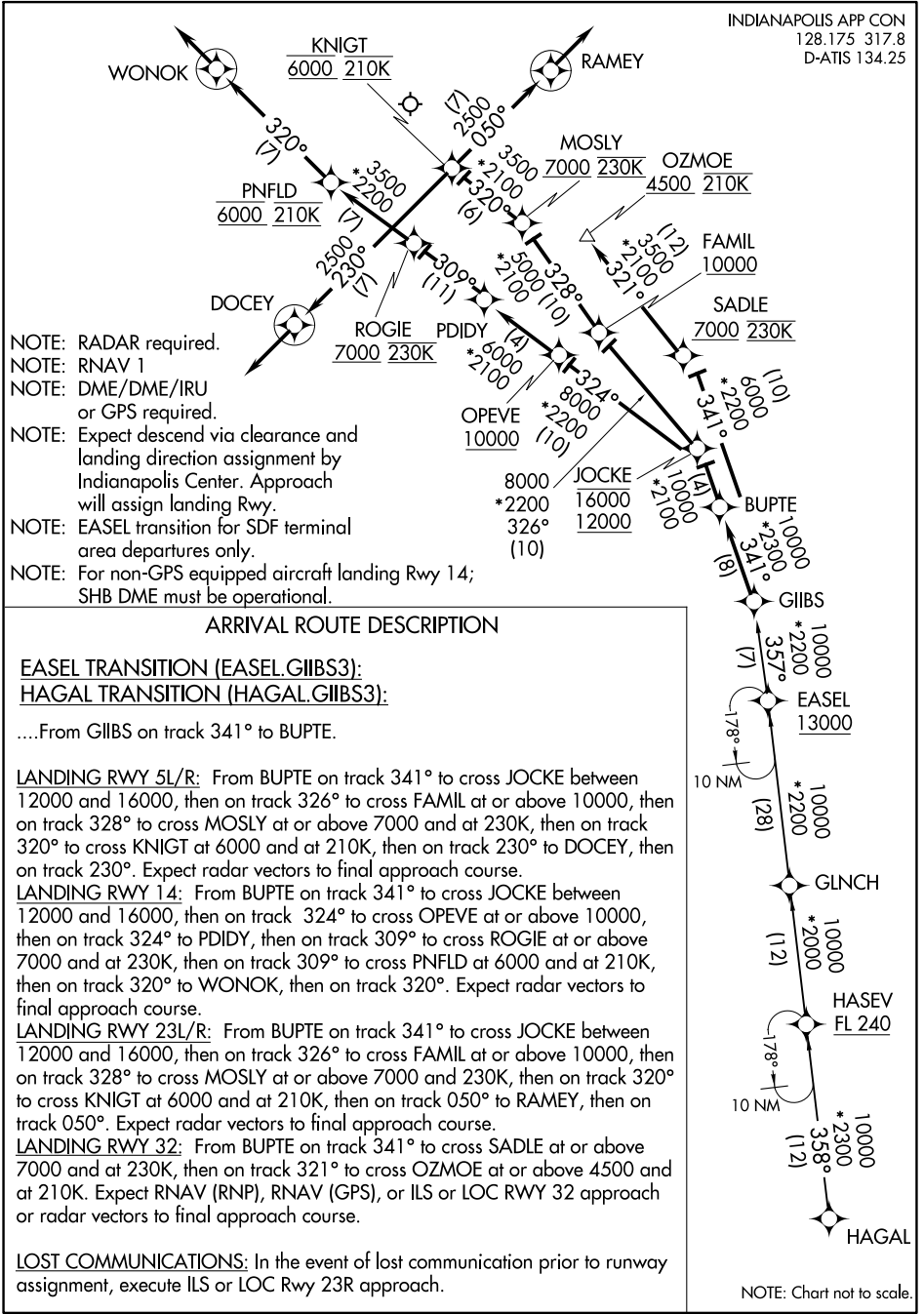


GIIBS THREE ARRIVAL (RNAV)

INDIANAPOLIS APP CON
128.175 317.8
D-ATIS 134.25



- NOTE: RADAR required.
- NOTE: RNAV 1
- NOTE: DME/DME/IRU or GPS required.
- NOTE: Expect descend via clearance and landing direction assignment by Indianapolis Center. Approach will assign landing Rwy.
- NOTE: EASEL transition for SDF terminal area departures only.
- NOTE: For non-GPS equipped aircraft landing Rwy 14; SHB DME must be operational.

ARRIVAL ROUTE DESCRIPTION

EASEL TRANSITION (EASEL.GIIBS3):

HAGAL TRANSITION (HAGAL.GIIBS3):

....From GIIBS on track 341° to BUPTTE.

LANDING RWY 5L/R: From BUPTTE on track 341° to cross JOCKE between 12000 and 16000, then on track 326° to cross FAMIL at or above 10000, then on track 328° to cross MOSLY at or above 7000 and at 230K, then on track 320° to cross KNIGT at 6000 and at 210K, then on track 230° to DOCEY, then on track 230°. Expect radar vectors to final approach course.

LANDING RWY 14: From BUPTTE on track 341° to cross JOCKE between 12000 and 16000, then on track 324° to cross OPEVE at or above 10000, then on track 324° to PDIDY, then on track 309° to cross ROGIE at or above 7000 and at 230K, then on track 309° to cross PNFLD at 6000 and at 210K, then on track 320° to WONOK, then on track 320°. Expect radar vectors to final approach course.

LANDING RWY 23L/R: From BUPTTE on track 341° to cross JOCKE between 12000 and 16000, then on track 326° to cross FAMIL at or above 10000, then on track 328° to cross MOSLY at or above 7000 and 230K, then on track 320° to cross KNIGT at 6000 and at 210K, then on track 050° to RAMEY, then on track 050°. Expect radar vectors to final approach course.

LANDING RWY 32: From BUPTTE on track 341° to cross SADLE at or above 7000 and at 230K, then on track 321° to cross OZMOE at or above 4500 and at 210K. Expect RNAV (RNP), RNAV (GPS), or ILS or LOC RWY 32 approach or radar vectors to final approach course.

LOST COMMUNICATIONS: In the event of lost communication prior to runway assignment, execute ILS or LOC Rwy 23R approach.

NOTE: Chart not to scale.

GIIBS THREE ARRIVAL