

LOC/DME I-UZK 111.75 Chan 54 (Y)	APP CRS 230°	Rwy Idg 11200 TDZE 783 Apt Elev 796
--	------------------------	--

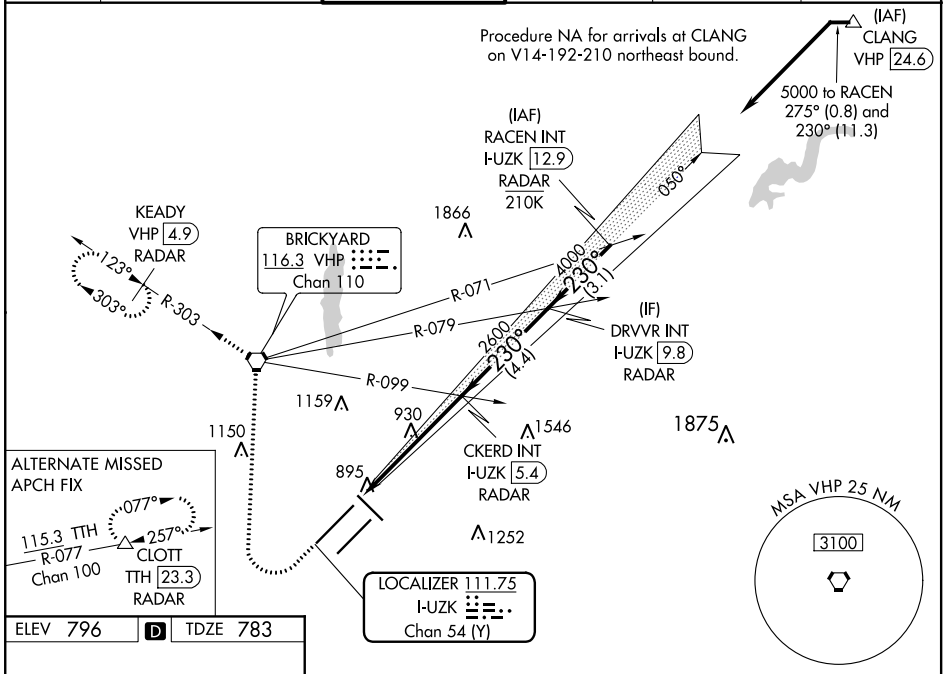
ILS RWY 23R (SA CAT I & II)

INDIANAPOLIS INTL (IND)

⚠ Simultaneous approach authorized. DME or RADAR required. Requires specific OPSPEC, MSPEC, or LOA approval and use of HUD to DH. Reduced lighting: requires specific OPSPEC, MSPEC, or LOA approval and use of autoland or HUD to touchdown.

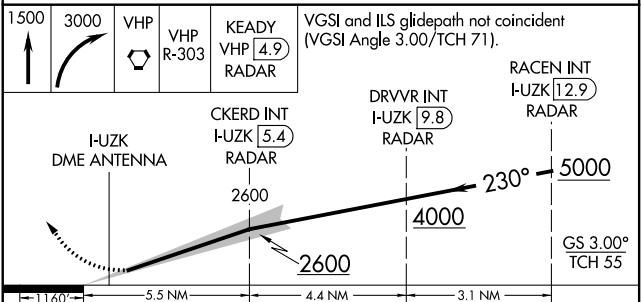
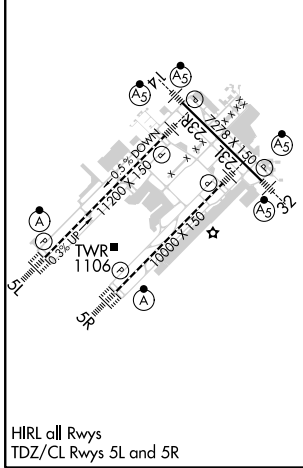
MALSR MISSED APPROACH: Climb to 1500 then climbing right turn to 3000 direct VHP VORTAC and on VHP R-303 to KEADY/VHP 4.9 DME/RADAR and hold.

D-ATIS 134.25	INDIANAPOLIS APP CON 128.175 317.8	INDY TOWER 120.9 257.8	GND CON 121.9	CLNC DEL 128.75 257.8	CPDLC
-------------------------	--	----------------------------------	-------------------------	---------------------------------	-------



EC-2, 25 MAR 2021 to 22 APR 2021

EC-2, 25 MAR 2021 to 22 APR 2021



CATEGORY	A	B	C	D
S-ILS 23R		SA CAT I RA 140/14	150	DA 933
S-ILS 23R		SA CAT II RA 96/12	100	DA 883

SA CATEGORY I & II ILS - SPECIAL AIRCREW & AIRCRAFT CERTIFICATION REQUIRED