

LOC/DME I-FVJ <b>111.15</b> Chan <b>48 (Y)</b>	APP CRS <b>230°</b>	Rwy Idg <b>10000</b>
		TDZE <b>790</b>
		Apt Elev <b>796</b>

# ILS or LOC RWY 23L

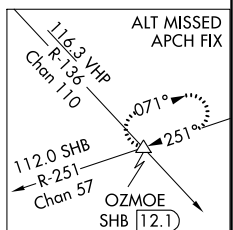
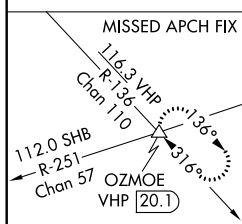
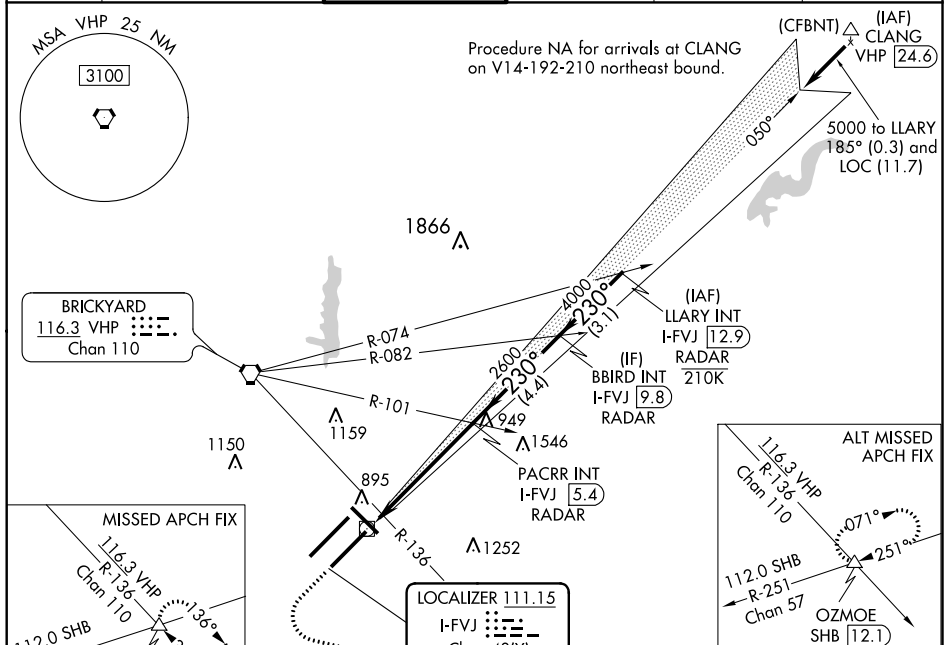
## INDIANAPOLIS INTL (IND)

**Simultaneous approach authorized.**  
\*\*RYR 1800 authorized with use of FD or AP or HUD to DA.

**MALSR**

MISSED APPROACH: Climb to 1500 then climbing left turn to 3000 on heading 100° and on VHP VORTAC R-136 to OZMOE/VHP 20.1 DME and hold.

D-ATIS <b>134.25</b>	INDIANAPOLIS APP CON <b>128.175 317.8</b>	INDY TOWER <b>120.9 257.8</b>	GND CON <b>121.9</b>	CLNC DEL <b>128.75 257.8</b>	CPDLC
-------------------------	--	----------------------------------	-------------------------	---------------------------------	-------



1500 3000 hdg 100°

VHP R-136 OZMOE

VGSI and ILS glidepath not coincident (VGSI Angle 3.00/TCH 75).

\* LOC only

I-FVJ DME ATNENNA I-FVJ 0.2

I-FVJ 0.8

PACRR INT I-FVJ 5.4 RADAR

BBIRD INT I-FVJ 9.8 RADAR

LLARY INT I-FVJ 12.9 RADAR

2600 230° 5000 4000

GS 3.00° TCH 57

1 NM 4.5 NM 4.4 NM 3.1 NM

CATEGORY	A	B	C	D
S-ILS 23L	** 990/24		200 (200-1/2)	
S-LOC 23L	1180/24	390 (400-1/2)	1180/35	390 (400-5/8)
CIRCLING	1420-1	624 (700-1)	1420-1 3/4 624 (700-1 3/4)	1560-2 1/2 764 (800-2 1/2)

ELEV 796 TDZE 790

230° 5.5 NM from FAF

LLARY INT I-FVJ 12.9 RADAR

BBIRD INT I-FVJ 9.8 RADAR

PACRR INT I-FVJ 5.4 RADAR

TWR 110.6

HIRL all Rwys

TDZ/CL Rwys 5L and 5R

FAF to MAP 5.5 NM

Knots	60	90	120	150	180
Min:Sec	5:30	3:40	2:45	2:12	1:50

EC-2, 25 MAR 2021 to 22 APR 2021

EC-2, 25 MAR 2021 to 22 APR 2021