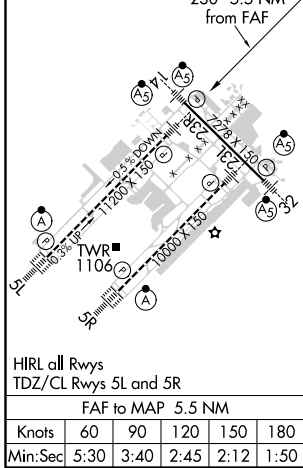
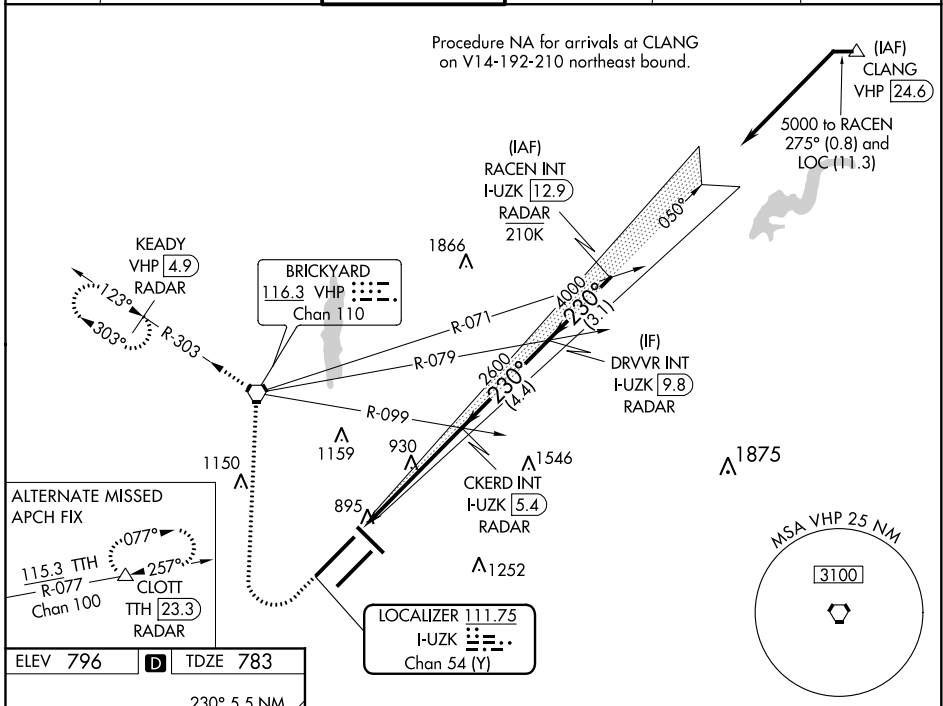


LOC/DME I-UZK 111.75 Chan 54 (Y)	APP CRS 230°	Rwy Idg 11200 TDZE 783 Apt Elev 796
---	------------------------	--

ILS or LOC RWY 23R

INDIANAPOLIS INTL (IND)

<p>⚠ ** RVR 1800 authorized with use of FD or AP or HUD to DA. Simultaneous approach authorized. DME or RADAR required.</p>		<p>MALS</p>	<p>MISSED APPROACH: Climb to 1500 then climbing right turn to 3000 direct VHP VORTAC and on VHP R-303 to KEADY/VHP 4.9 DME/RADAR and hold.</p>		
D-ATIS 134.25	INDIANAPOLIS APP CON 128.175 317.8	INDY TOWER 120.9 257.8	GND CON 121.9	CLNC DEL 128.75 257.8	CPDLC



1500	3000	VHP	VHP R-303	KEADY VHP 4.9 RADAR	VGSI and ILS glidepath not coincident (VGSI Angle 3.00/TCH 71).	RACEN INT I-UZK 12.9 RADAR
*LOC only.		I-UZK DME ANTENNA	*I-UZK 0.9	CKERD INT I-UZK 5.4 RADAR	DRVVR INT I-UZK 9.8 RADAR	
I-UZK 0.2		2600		2600	4000	5000
-1 NM		4.5 NM		4.4 NM	3.1 NM	
CATEGORY	A		B		C	D
S-ILS 23R **	983/24 200 (200-½)					
S-LOC 23R	1180/24		397 (400-½)		1180/35	397 (400-¾)
C CIRCLING	1420-1		624 (700-1)		1420-1¾ 624 (700-1¾)	1560-2½ 764 (800-2½)

GS 3.00° TCH 55

EC-2, 25 MAR 2021 to 22 APR 2021

EC-2, 25 MAR 2021 to 22 APR 2021